

BRAZIL'S PREMIUM 50KM GOLD-COPPER VMS BELT

- Developing the giant Cabaçal VMS deposit
- Market leading PEA metrics
- Near term Hub & Spoke development strategy



CAUTIONARY NOTE REGARDING FORWARD-LOOKING STATEMENTS



This presentation does not constitute or form a part of, and should not be construed as an offer, solicitation or invitation to subscribe for, underwrite or otherwise acquire, any securities of Meridian Mining UK Societas ("Meridian"), nor shall it or any part of it form the basis of or be relied on in connection with any contract or commitment whatsoever.

Readers are directed to the public disclosure of Meridian available under Meridian's profile on the System for Electronic Document Analysis and Retrieval ("SEDAR") at www.sedar.com. Information contained in this presentation was believed to be accurate at the time it was posted, but may be superseded by more recent public disclosure of Meridian. Meridian makes no representations or warranties as to the accuracy, reliability, completeness or timeliness of the information in this presentation.

Some of the statements contained in this presentation may be forward-looking statements or forward-looking information within the meaning of applicable securities laws (collectively, "forward-looking statements"). All statements herein, other than statements of historical fact, are forward-looking statements. Although Meridian believes that such statements are reasonable, it can give no assurance that such expectations will prove to be correct. Forward-looking statements are typically identified by words such as: believe, expect, anticipate, intend, estimate, postulate, and similar expressions, or are those, which, by their nature, refer to future events. Meridian cautions investors that any forward-looking statements are not guarantees of future results or performance, and that actual results may differ materially from those in forward-looking statements as a result of various factors, including, but not limited to: the preliminary nature of the 2023 Cabaçal PEA and the Company's ability to realize the results of the 2023 Cabaçal PEA; capital and other costs varying significantly from estimates; changes in world metal markets; changes in equity markets; that the political environment in which the Company operates will continue to support the development and operation of mining projects; the threat associated with outbreaks of viruses and infectious diseases, including the novel COVID-19 virus; risks related to negative publicity with respect to the Company or the mining industry in general; planned drill programs and results varying from expectations; delays in obtaining results; equipment failure; unexpected geological conditions; local community relations; dealings with non-governmental organizations; delays in operations due to permit grants; environmental and safety risks; and other risks and uncertainties disclosed under the heading "Risk Factors" in Meridian's most recent Annual Information Form filed on www.sedar.com. Any forward-looking statement speaks only as of the date on which it is made and, except as may be required by applicable securities laws, Meridian does not assume the obligation to revise or update forward-looking statements or information that may be contained in this presentation or to revise them to reflect the occurrence of future unanticipated events.

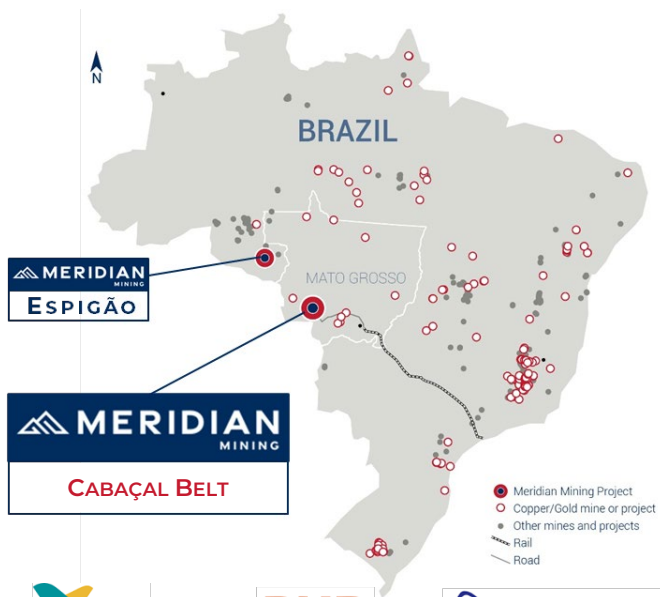
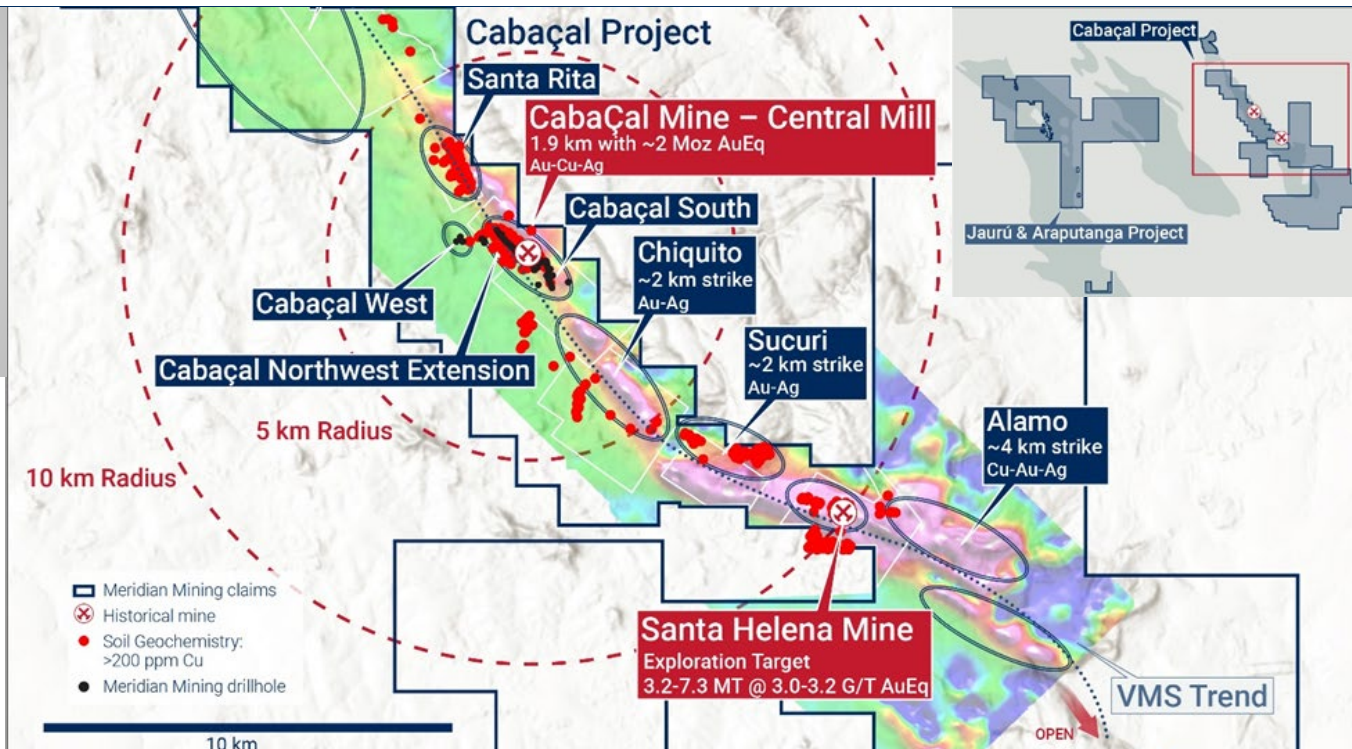
The Cabaçal Gold-Copper Project NI 43-101 Technical Report and Preliminary Economic Assessment, Mato Grosso, Brazil, and dated March 30, 2023 (with an effective date of March 1, 2023) (the "2023 Cabaçal PEA") was prepared for the Meridian by Tommaso Roberto Raponi, P. Eng., of Ausenco Engineering Canada Inc., Scott Elfen, P. Eng., of Ausenco Engineering Canada Inc., Simon Tear, P. Geo., of H&S Consultants Pty Ltd, Marcelo Batelochi, MAusIMM (CP Geo), of MB Geologia Ltda. Joseph Keane, P. Eng., of SGS North America Inc. and Guilherme Gomides Ferreira (Mine Engineer MAIG), of GE21 Consultoria Mineral. All authors of the 2023 Cabaçal PEA are independent "qualified persons" as defined by NI 43-101. The 2023 Cabaçal PEA may be found on the Company's website at www.meridianmining.co or under the Company's profile on SEDAR at www.sedar.com. Readers are encouraged to read the entire 2023 Cabaçal PEA.

Readers are cautioned that the 2023 Cabaçal PEA is preliminary in nature and is intended to provide an initial assessment of the Cabaçal's economic potential and development options. The 2023 Cabaçal PEA mine schedule and economic assessment includes numerous assumptions and is based on inferred mineral resources. Inferred resources are considered too speculative geologically to have the economic considerations applied to them that would enable them to be categorized as mineral reserves, and there is no certainty that the 2023 Cabaçal PEA results will be realized. Mineral resources are not mineral reserves and do not have demonstrated economic viability. Additional exploration will be required to potentially upgrade the classification of the inferred mineral resources to be considered in future advanced studies.

Mr. Erich Marques, B.Sc., MAIG, Chief Geologist of Meridian Mining and a Qualified Person as defined by National Instrument 43-101, has reviewed, and verified the technical information in this presentation.

BELT SCALE EXPLORATION

- GIANT CABAÇAL DEPOSIT DEFINED
- >50KM UPSIDE POTENTIAL
- MULTIPLE VMS PROSPECTS
- HUB & SPOKE DEVELOPMENT STRATEGY



CABAÇAL MINE

- NPV₅ - USD 573 M
- IRR - 58.4%
- PAYBACK – 10.6 MONTHS
- LOW CAPEX – USD 180 M
- LOM REVENUE - USD 2.9 B (ALL POST TAX)

SANTA HELENA

- 2ND HIGH-GRADE OPEN PIT
- EXPLORATION TARGET - 3.2-7.3 MT @ 3.0-3.2 g/t AuEq²
- HOSTED WITHIN ONLY 1.4KM OF ~3KM PROSPECT

VMS Belts have a history of Low Capex – High Returns – Intergeneration Production

VMS Clusters - Hub & Spoke Strategy

- VMS deposits occur in Clusters & tend to form ~4km spacings
- Deposit clusters ideal for Hub & Spoke development strategy

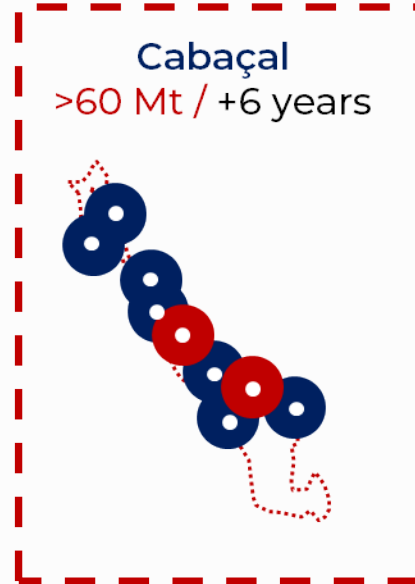
Giant Scale VMS

- Cabaçal Mine – “Giant” (>30 Mt) VMS Deposit on Standalone Basis
- Top 4% Global VMS Deposits by Tonnage
- Cabaçal VMS Belt underexplored and under-developed compared to analogue camps

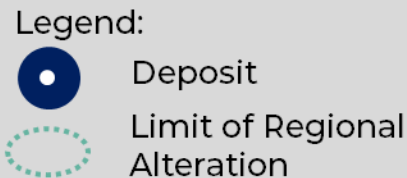
Intergenerational Production

- Many large VMS Deposits have over 50 year production history
- Cabaçal - 6 years past production & 22 year projected LOM (PEA)³

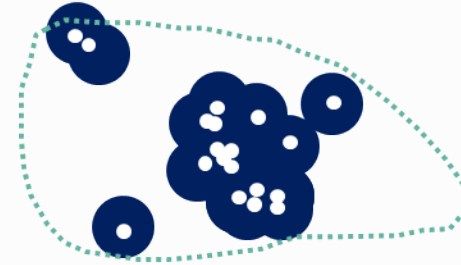
Notes: ¹ See Meridian Announcements
² Source: Akita University, Galley et al. (2007); Mercier-Langevin et al. (2007) S&P Global, Hudbay 2020
³ See News Release 6th March 2023



25 km



Noranda
 262 Mt / +55 years



Snow Lake
 56 Mt / +65 years



Flin Flon
 108 Mt / +90 years



Doyon-Bousquet-La Rond
 133 Mt / +90 years



Hokuroku
 122 Mt / +100 years





Our Directors



BRUCE MCLEOD
Independent Chair
+30 years experience



GILBERT CLARK
CEO & Director
+25 years experience



ADRIAN MCARTHUR
President & Director
+25 years experience



JOHN SKINNER
Independent Director
+35 years experience



SUSANNE SESSELMANN
Independent Director
+30 years experience



DOUG FORD
Independent Director
+35 years experience



NEIL GREGSON
Independent Director
+30 years experience

Our Management



GILBERT CLARK
CEO & Director
+25 years experience



ADRIAN MCARTHUR
President & Director
+25 years experience



MARTIN MCFARLANE
SVP – Strategy and Projects
+30 years experience



SORAIA MORAIS
Chief Financial Officer
+15 years experience



JAMES MCLUCAS
Corp. Development
+15 years experience



MARIANA BERMUDEZ
Company Secretary
+15 years experience



KATHERINE MACLEAN
Sustainability & Comms
+15 years experience

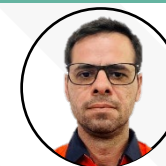
Our Brazilian Based Management



JOEL BRANDAO
Director of Brazil
+40 years experience



VITOR BELO
Mining Consultant
+30 years experience



ERICH MARQUES
Chief Geologist
+15 years experience



ANTONIO ALMEIDA
Senior geologist
+40 years experience



MARCELO AMORIM
Project Dev. Manager
+15 years experience



BARBARA SOUZA
Enviro. Engineer
+10 years experience



RODRIGO SALVI
Inhouse Counsel
+10 years experience



Corporate Structure¹

Shares Outstanding	300.1 m
Compensation Warrants	4.3 m (CAD 0.35-0.50)
Options	21.1 m (CAD 0.07-1.10)
Fully Diluted	325.4 m
Share Price	CAD 0.46 (26 April 2024)
Market Capitalization	CAD 138.0m
Cash ²	CAD 9.6 m
Placing Proceeds ³	CAD 20.1 m

Meridian Mining UK S



Analyst Coverage

Beacon Securities

Mike Curran

Cormark Securities

Stefan Ioannou

Raymond James

Craig Stanley

Notes: 1 Corporate Structure as of 28th November 2023 unless otherwise stated.

2 Cash Balance as of 31st December 2023 & includes ~USD 1.0m in Escrow per purchase agreement. 28th March 2024 Annual Financials Cash Balance & Exchange Rate 1.355 (Source - Bank of Canada)

3 Proceeds of Capital Raise closing announcement 9th April 2024.



PEA demonstrates exceptional potential economics from open-pit mining operation

		Copper Price											
		Downside 3.50		Base 3.59		4.00		Spot 4.13		4.50		Upside 5.00	
		NPV	IRR	NPV	IRR	NPV	IRR	NPV	IRR	NPV	IRR	NPV	IRR
Gold Price	1,550	\$510 m	53.5%	\$523 m	54.2%	\$582 m	57.0%	\$600 m	57.9%	\$654 m	60.3%	\$726 m	63.5%
	Base 1,650	\$560 m	57.8%	\$573 m	58.4%	\$632 m	61.1%	\$650 m	62.0%	\$704 m	64.4%	\$776 m	67.4%
	1,750	\$609 m	62.0%	\$622 m	62.6%	\$681 m	65.2%	\$700 m	66.0%	\$753 m	68.3%	\$825 m	71.3%
	Spot 1,841	\$655 m	65.7%	\$668 m	66.3%	\$727 m	68.9%	\$745 m	69.7%	\$799 m	71.9%	\$871 m	74.8%
	1,850	\$659 m	66.1%	\$672 m	66.7%	\$731 m	69.2%	\$750 m	70.0%	\$803 m	72.2%	\$875 m	75.1%
	Upside 1,950	\$709 m	70.1%	\$722 m	70.7%	\$781 m	73.1%	\$799 m	73.9%	\$853 m	76.0%	\$925 m	78.9%

**Low Initial
Capex**

USD 180 M

**Throughput
Rate**

2.5 Mtpa

Quick

Payback

10.6 months

**Low Sustaining
Capex**

USD 108 M

**Ave. Y1-5
Production**

131 koz AuEq

LOM

Revenue

USD 2.9 Bn

**Low AISC
(Y1-5)**

USD 671 / oz eq

**Total
Production**

1.8 Moz AuEq

PFS

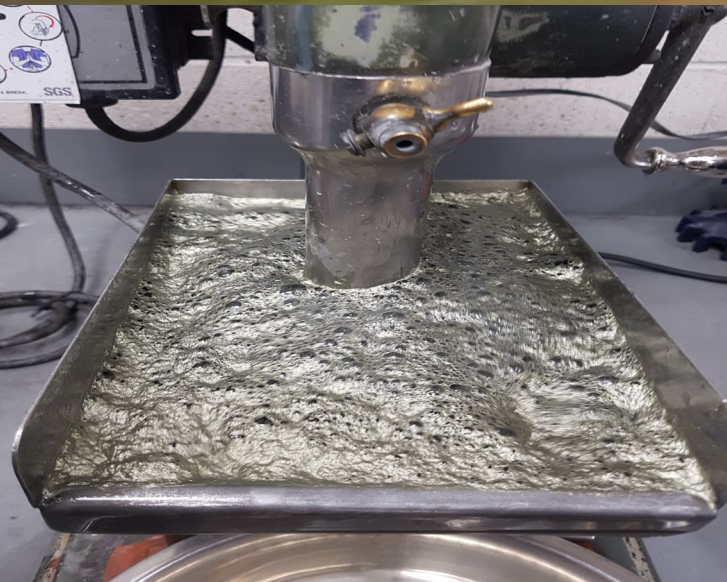
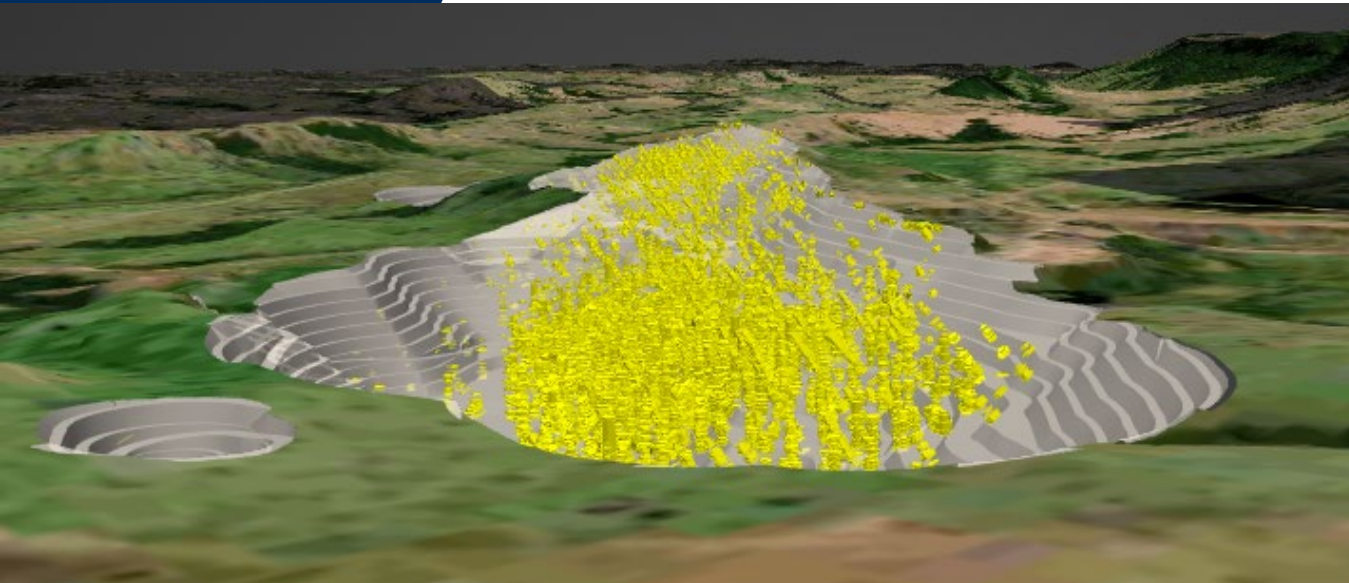
Initiated

Target 2024



	Tucumã	<ul style="list-style-type: none"> • 85% physical completion • Capex USD 310m vs USD 305m • Targeting completion H2 2024
	Tocantinzinho	<ul style="list-style-type: none"> • 87% complete • On time and budget • Targeting completion H2 2024
	Mara Rosa	<ul style="list-style-type: none"> • First Gold pour completed • On time and budget • Targeting Completion Q2 2024
	Almas	<ul style="list-style-type: none"> • Project complete • On time and budget • Targeting expansion 15% production

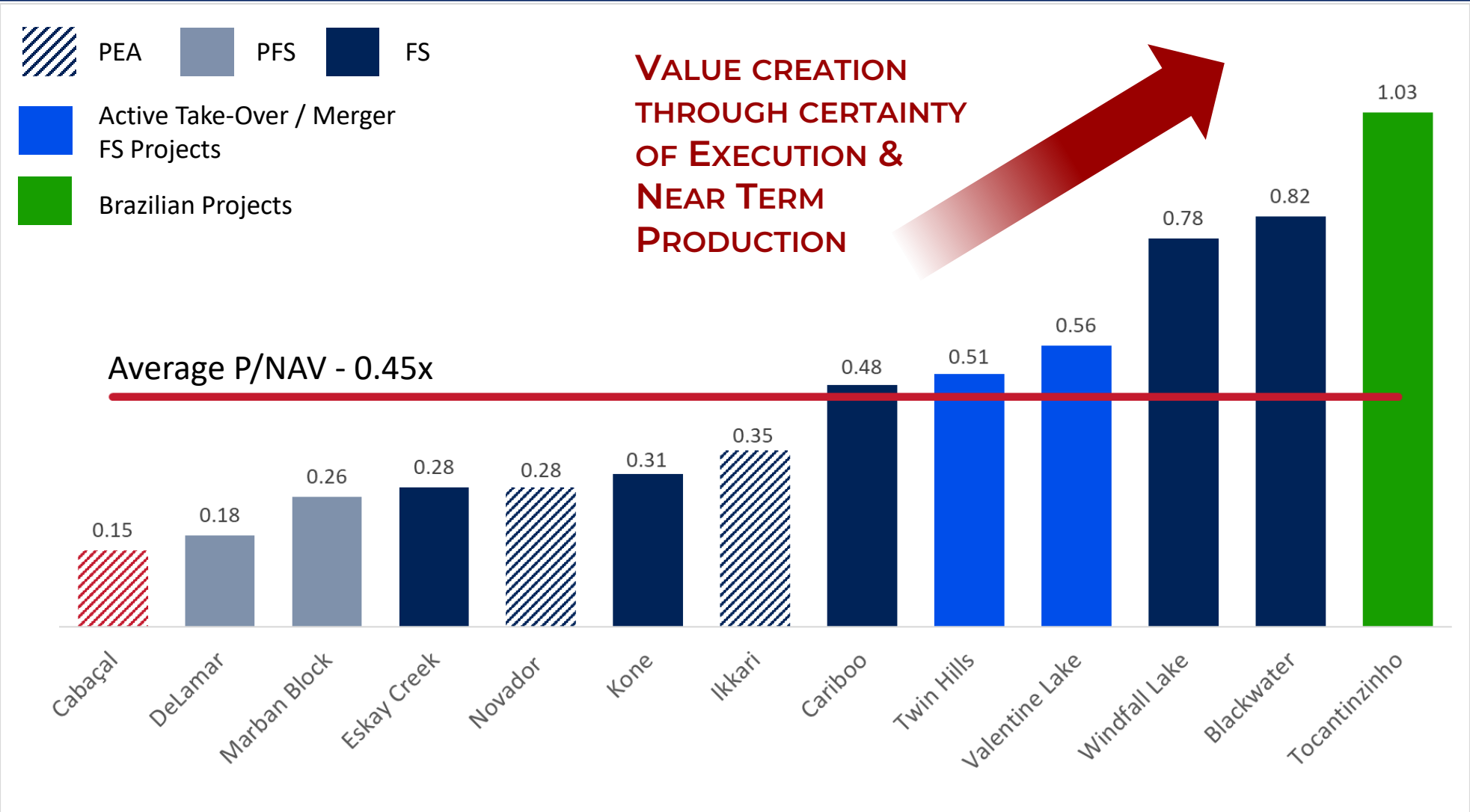
Notes:
 1 Photo Tocantinzinho
 1 See News Release 6th March 2023



PEA superior economics, driven by:

- High-grade starter pit
- Low Strip Ratio
- Simple processing
- High metallurgical recoveries
- Sustainable low-cost hydroelectric power
- Brazil's low-cost operating environment

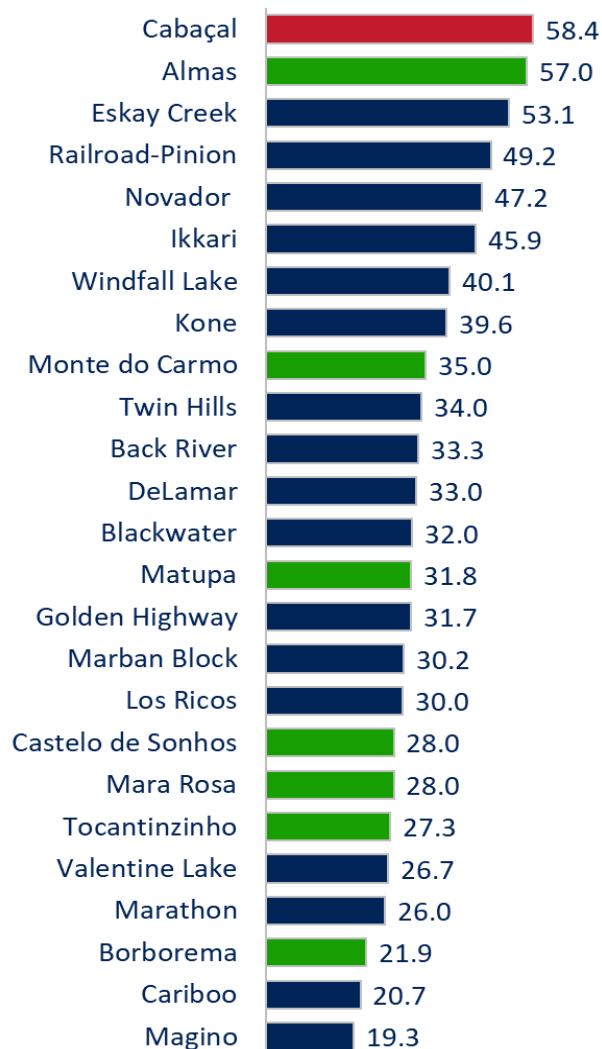
Development Project – Asset Basis - P/NAV (x) – Base Case (April 2024)



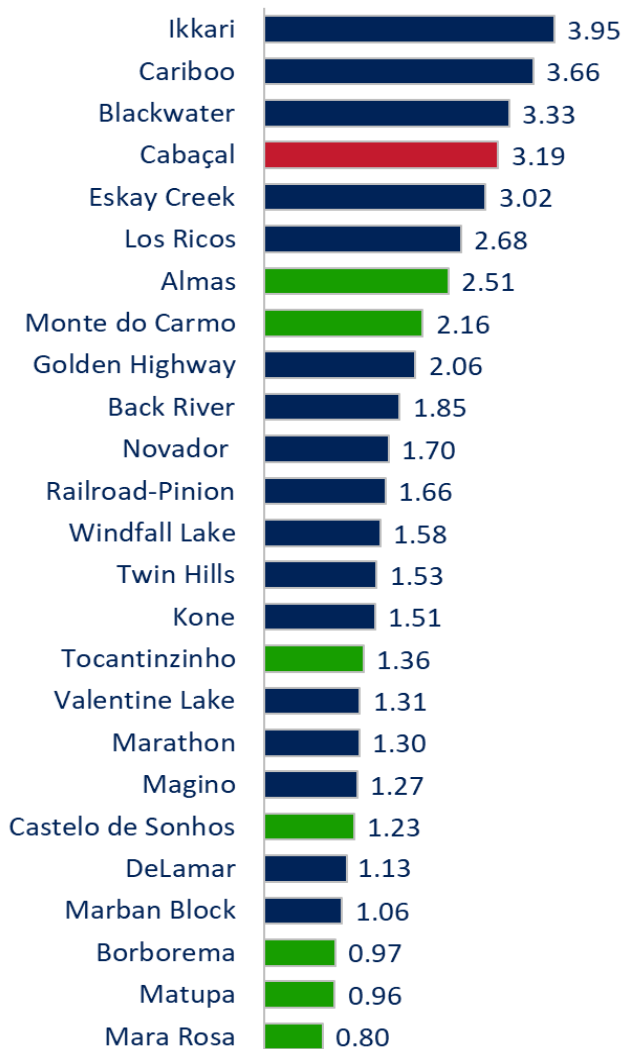
Notes:
1 See News Release 6th March 2023
2 Source CIBC Data, Market Data / Company Data – 8th April 2024



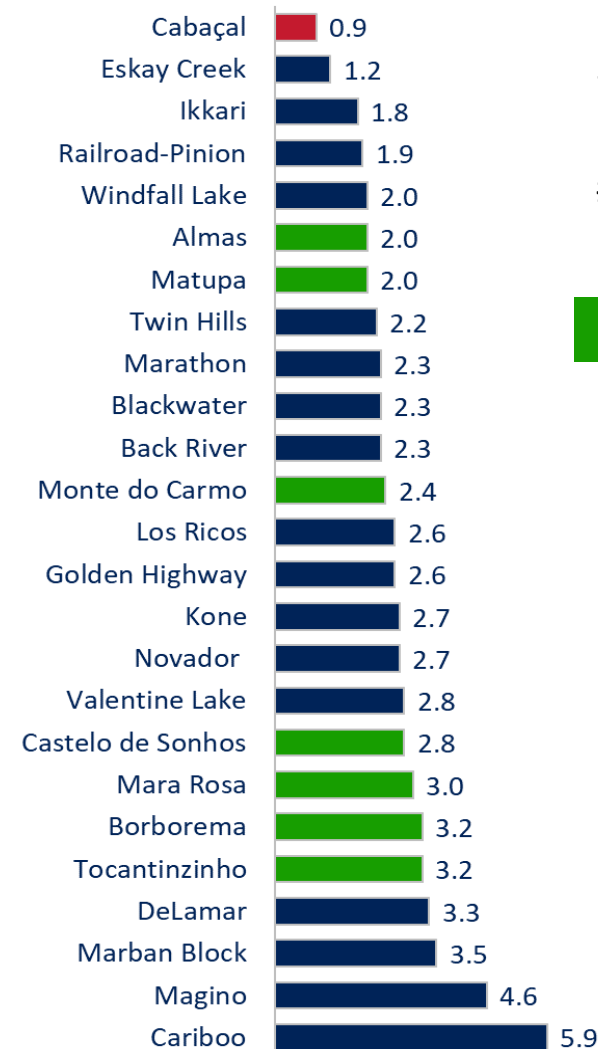
▼ After-Tax Unlevered IRR (%)



▼ After-Tax NPV₅ / Initial Capex (USDm)



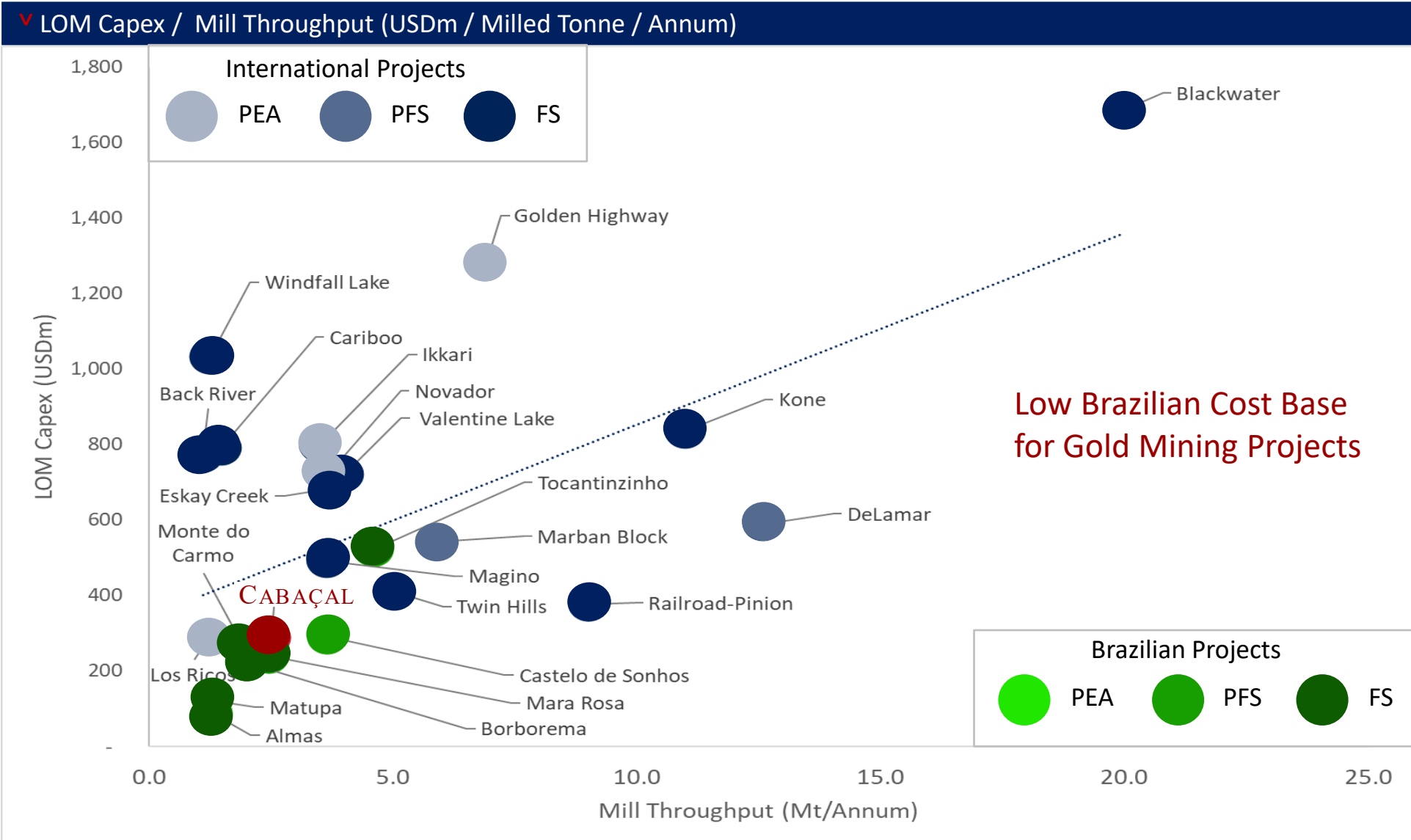
▼ Payback Period (Years)



Brazilian Projects

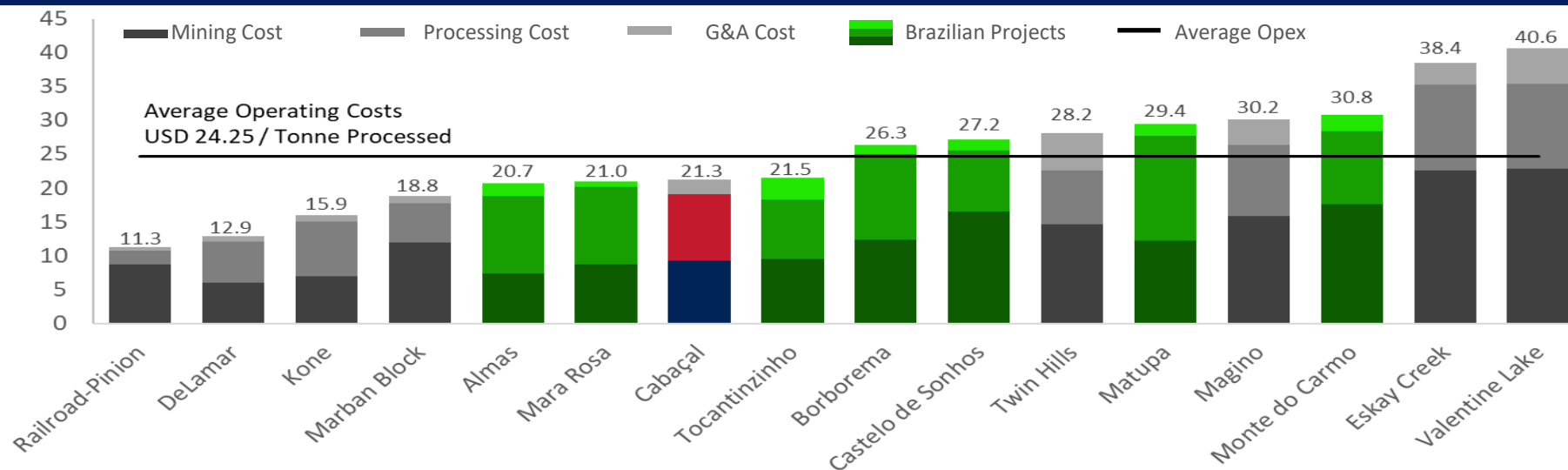


Notes:
¹ See News Release 6th March 2023
² Source CIBC Data, Market Data / Company Data – 27th December 2023

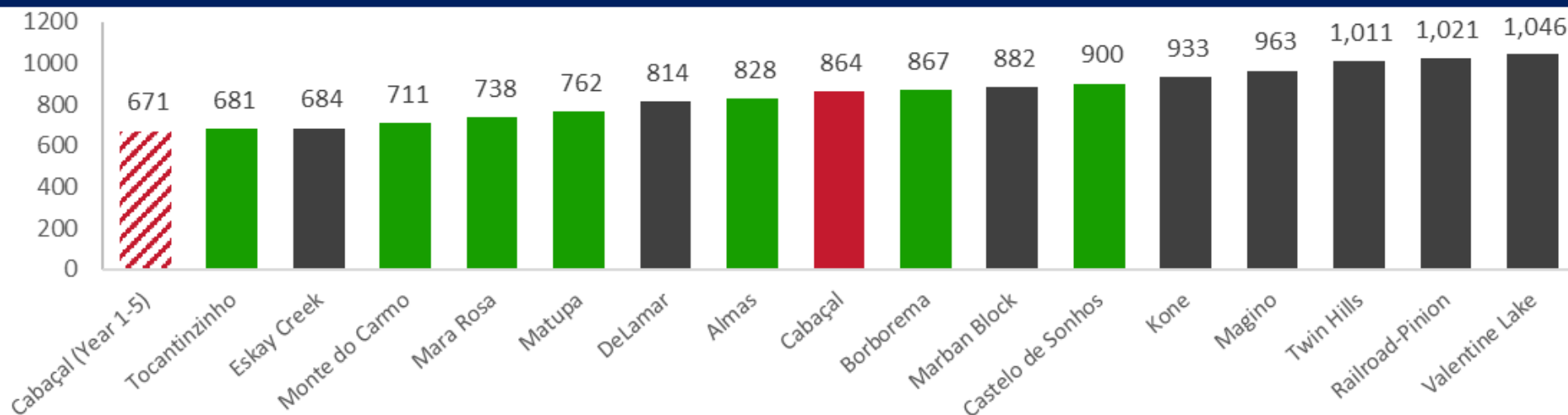




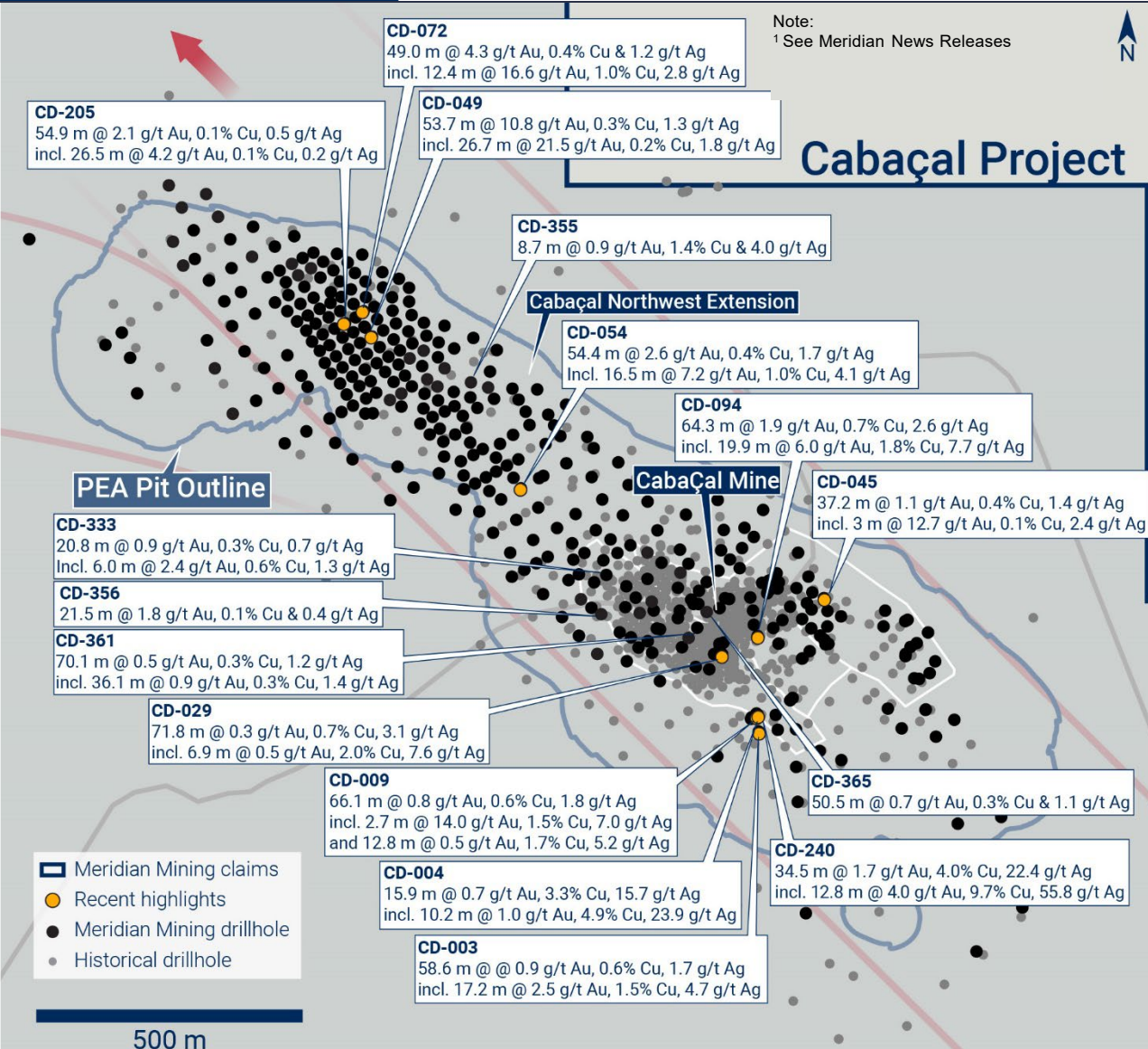
Operating Costs (USD / Tonne Milled)



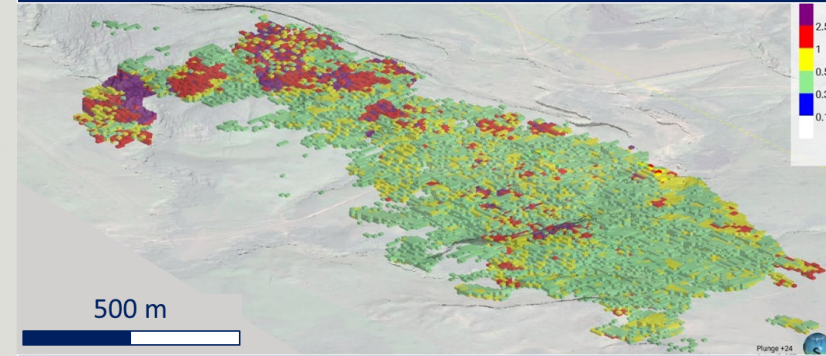
All-In-Sustaining-Cost (USD / Ounce Equivalent)



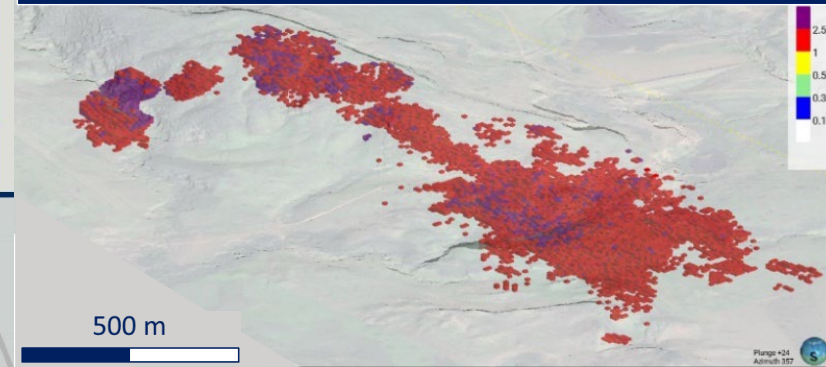
Notes:
 1 See News Release 6th March 2023
 2 Source CIBC Data, Market Data / Company Data – 27th December 2023



Resource Model (0.3 g/t AuEq Cut Off)



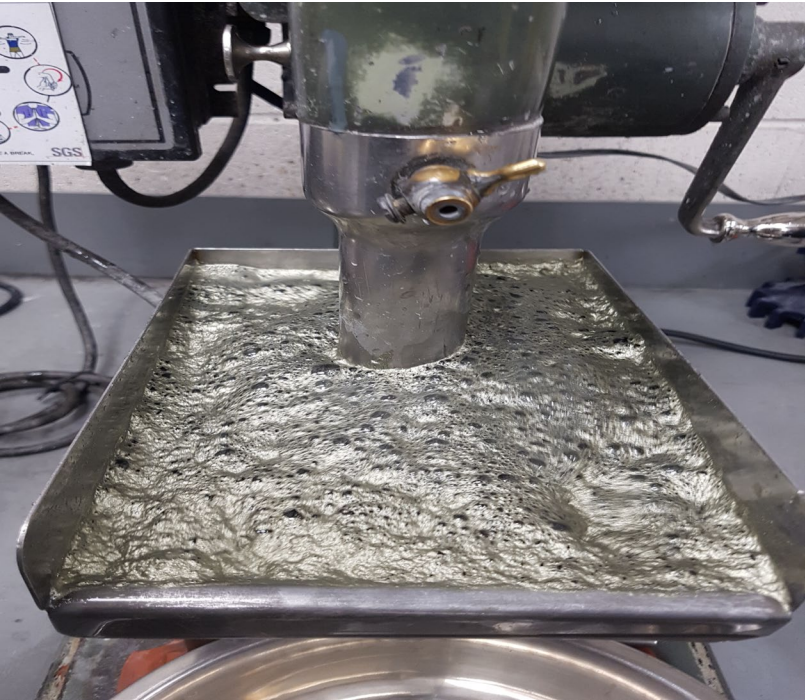
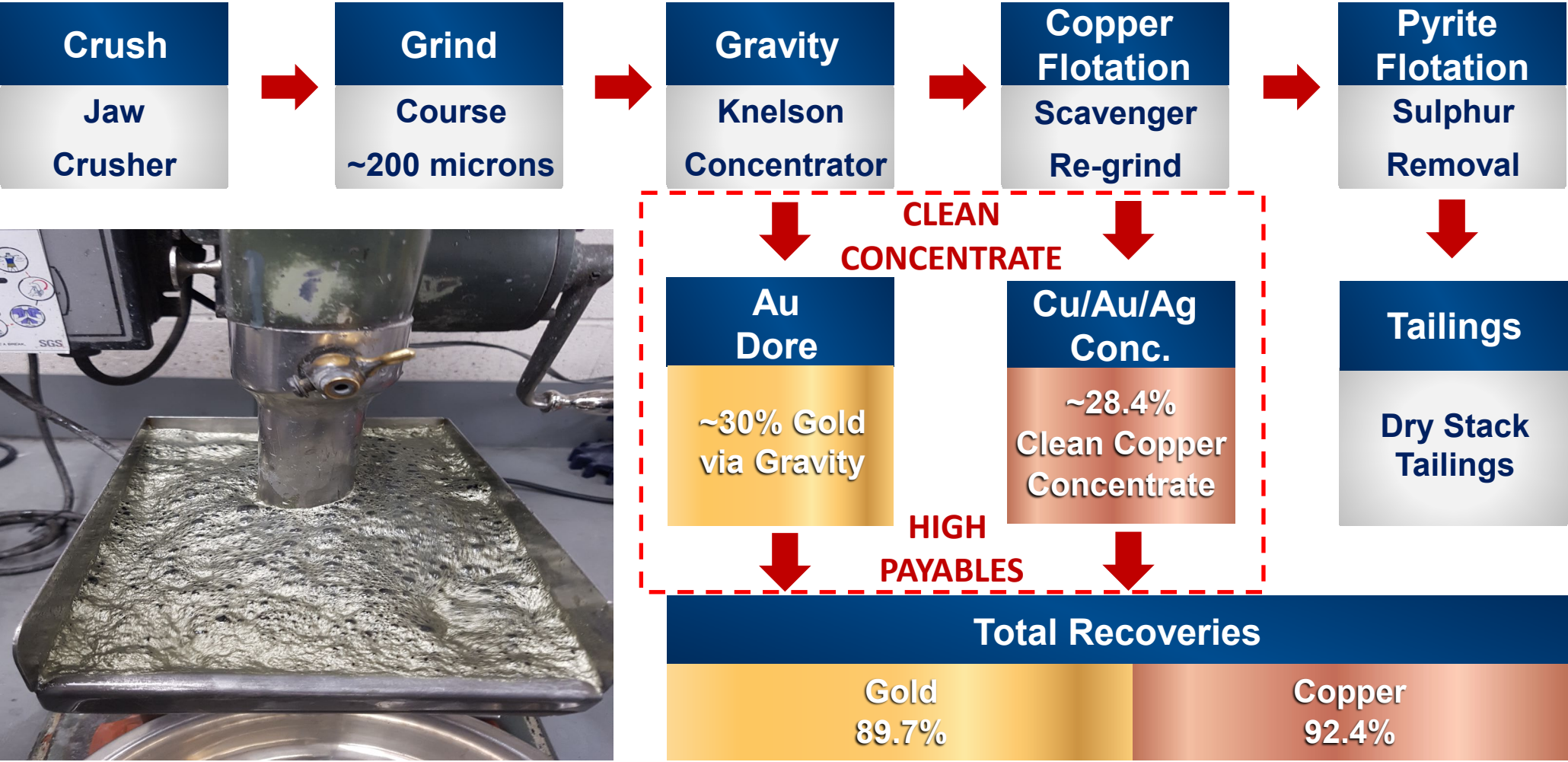
Resource Model (1.0 g/t AuEq Cut Off)



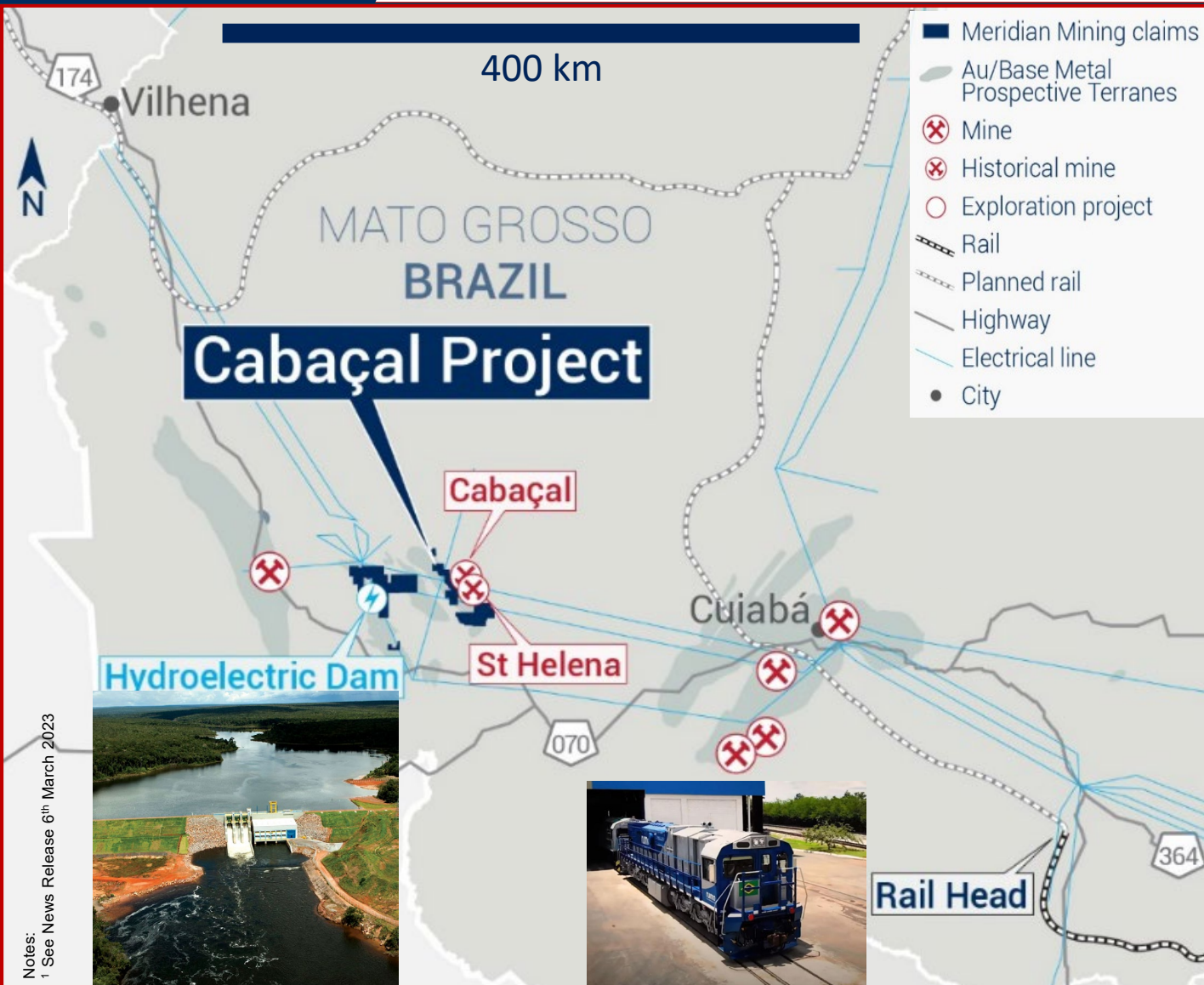
Cabaçal Mineral Resource

Cat.	Tonne (Mt)	Au (g/t)	Cu (%)	Ag (g/t)	AuEq (g/t)	AuEq (Moz)
Ind.	52.9	0.64	0.32	1.4	1.05	1.8
Inf.	10.3	0.68	0.24	1.1	0.96	0.3

Simple process flowsheet with high recoveries & payables



Notes: See News Release 6th March 2023



Power:

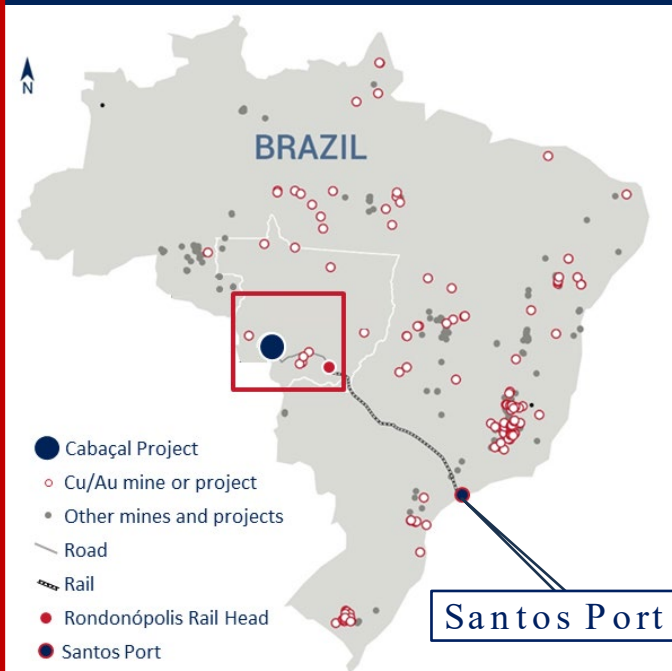
- Expanding 20km line from Araputanga

Rail Head:

- 385km Highway to Rondonópolis
- Direct to major Santos Port

Bridges:

- Existing concrete bridges
- 1 x Bridge Upgrade required





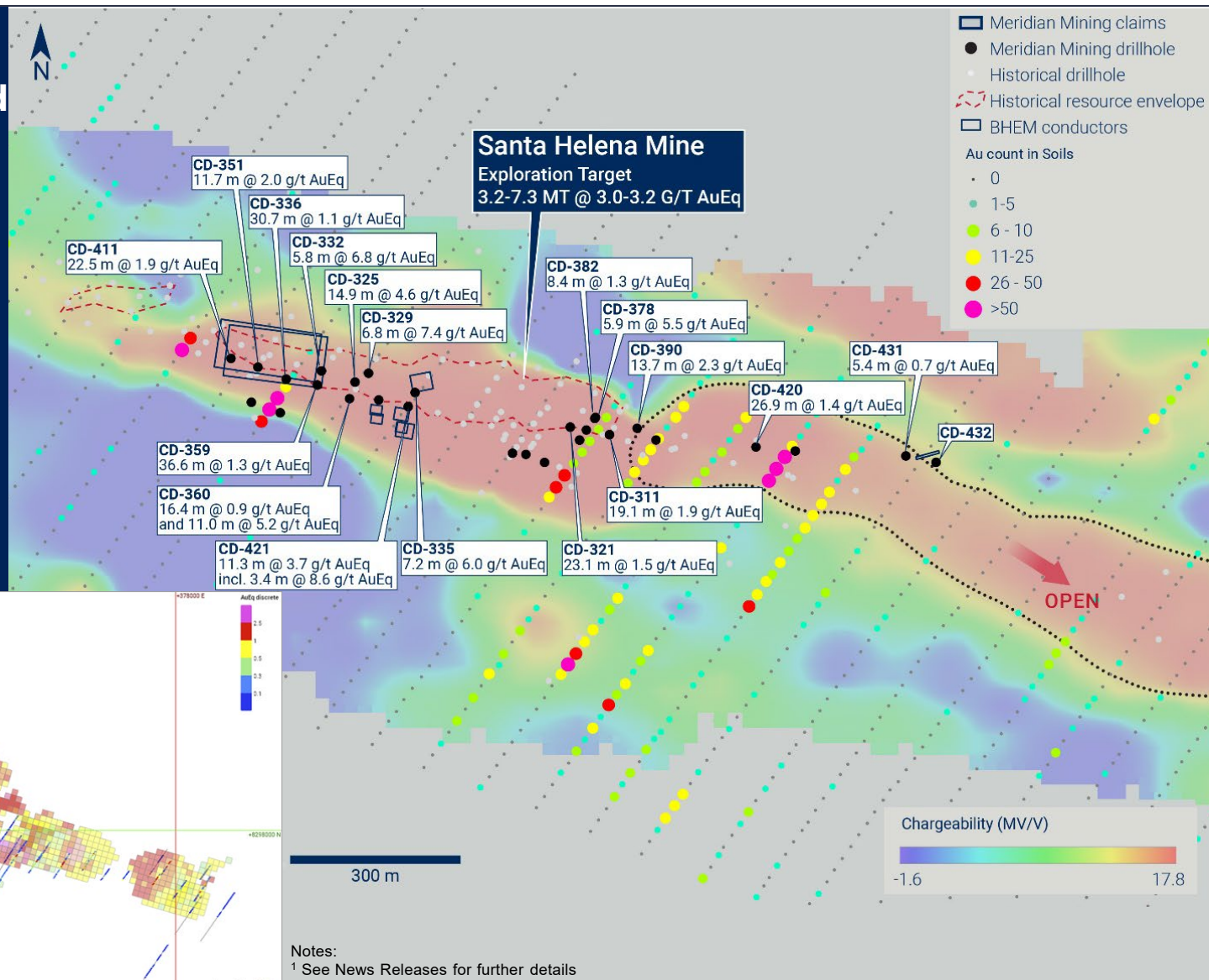
High-grade Cu-Au-Ag-Zn massive sulphide intercepted

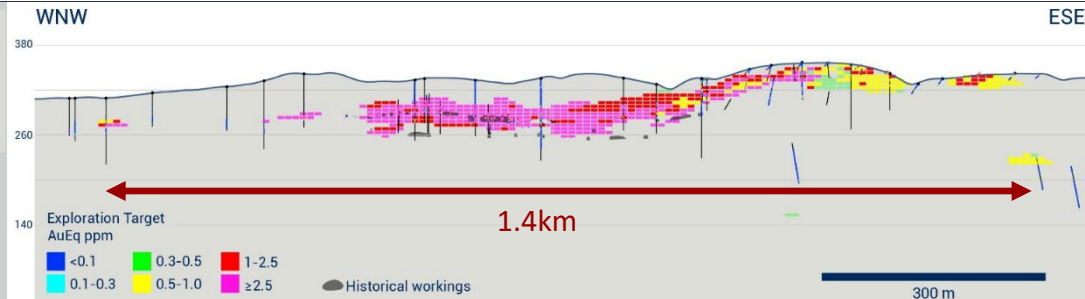
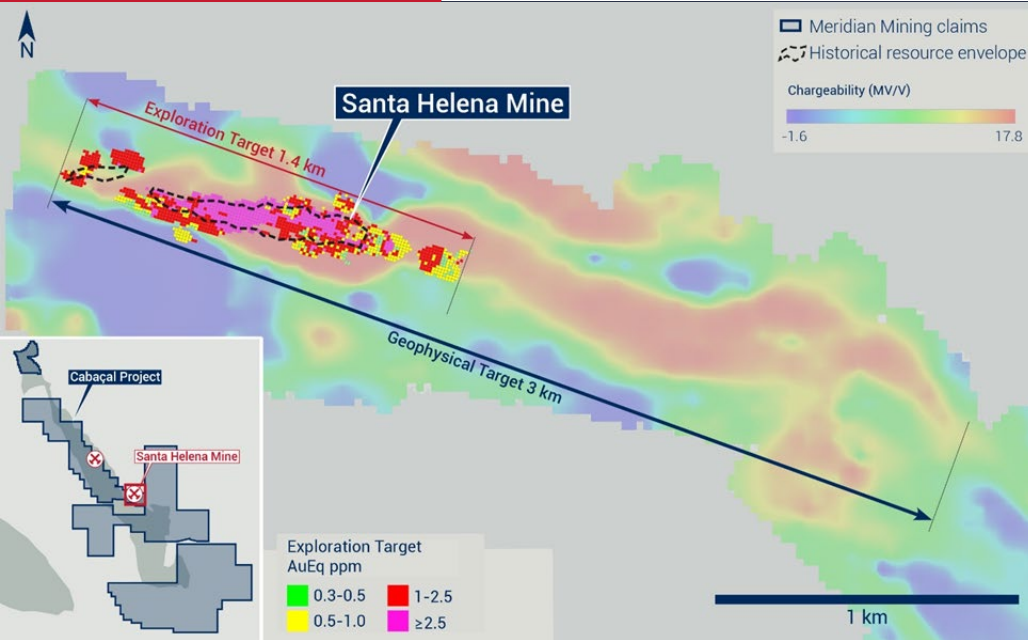
Multiple new EM plates extending out from Santa Helena Mine

Untested targets for further Cu-Zn-Au-Ag zones

1.6km open exploration target extending to the East

New polymetallic VMS lens discovered

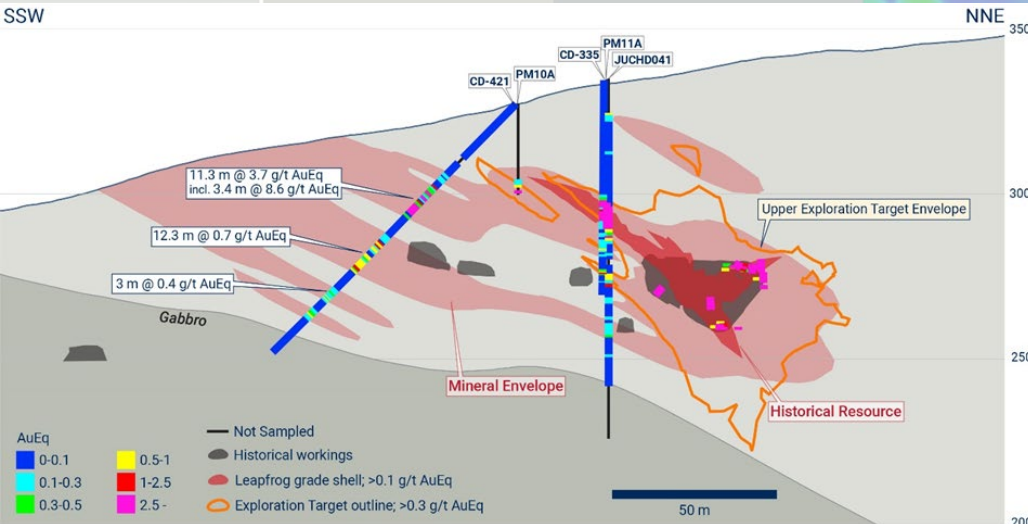




Initial Exploration Target 3.2 - 7.3 MT @ 3.0 – 3.2 g/t AuEq*

Exploration Target contained within only 1.4km of the ~3km prospective trend

Potential high-grade metal inventory range of between 306,000 to 763,000 AuEq ounces



*The potential quantity and grade of an Exploration Target is conceptual in nature. There has been insufficient exploration to define a mineral resource, and it is uncertain if further exploration will result in the target being delineated as a mineral resource. The metal equivalence formula is based on the historical Santa Helena resource report, calculated as AuEq based on gold being the dominant metal of the Cabaçal VMS camp, as the expectation is that Santa Helena's mineralization will be evaluated for processing through a centralized facility at the Cabaçal mill with the addition of a zinc circuit.

Notes:¹ See News Releases for further details

HISTORIC PRODUCTION:

- 439,813t @ 6.6% Zn, 1.6% Cu, 1.8 g/t Au, and 43.0g/t Ag
- Existing Mining License Granted
- Mine Operated 2006-2008
- High Quality Historic Concentrate Grades

HISTORICAL RECOVERY:

- Simple Flotation recovery
- Metallurgical Recovery Assumptions
- 89% Zn, 89% Cu, 65% Au, 61% Ag;
- No Gravity Gold Circuit included

POTENTIAL FOR OPEN PIT:

- 10km Trucking distance to Cabaçal



Previous Flotation Plant (Production 2006-2008)

Separate of Zinc and Copper Concentrates
Gold and Silver report to Copper Concentrate

Notes:

¹ See News Releases for further details



Advancing multiple assets towards near-term production decision

		2024			2025				2026
		Q2	Q3	Q4	Q1	Q2	Q3	Q4	Q1
Cabacal	Data Collection for PFS								
	PFS & Resource Update								
	Target for Grant Preliminary License								
	Feasibility Study								
	Option Agreement - Stage 5								
	Submission of Installation License Application								
	Target for Granting of Installation License								
	Option Agreement - Stage 6								
	Project Financing								
	Option Agreement - Stage 7 (Final)								
	Decision to Mine								
	Construction								
Santa Helena	Santa Helena Drilling								
	Metallurgical Program								
	Santa Helena Resource								
	Enviromatal Data Collection & Study								
	Submission of Preliminary Licence								
	Feasibility Study								
Other	Multiple Mine Corridor Development Targets								
	Further Belts Scale Exploration								
	Strategic Review Underway for Non-Core Assets								



CABAÇAL

PFS & Resource Update leading to Higher Project Certainty
Evaluating potential increase throughput rate up to ~4.5 mtpa
Low strip open pit mine – Simple process flowsheet –
Green Hydroelectricity
PEA - NPV₅ USD 573M & IRR 58.4% - Low Capital Cost USD 180M

**SANTA
HELENA**

Potential 2nd open pit for Hub & Spoke strategy
Exploration Target shows potential for high-grade project

**BELT
SCALE**

Mine corridor exploration upside in 50km belt
Advancing regional target - Sucuri & Alamo Cu/Au



APPENDIX

Cabaçal History BP Minerals

Discovery
1980-1984

Development
1984-1986

Production
1986-1991

Rio Tinto
Acquisition
1989-2005



**AFONSO
FIGUEIREDO**
Geologist
+ 50 years
experience



**ROCKY
OSBORNE**
Geologist
+ 40 years
experience



**GILSON
TEIXEIRA**
Geologist
+ 40 years
experience



**JOHN
WAGHORN**
Geologist
+ 50 years
experience

**Industry leading expertise
in metallurgy and base
metals concentrates**



**PHILLIP
MACKEY**
Metallurgist
+ 50 years
experience



**MIKE
OUNPUU**
Geological Engineer
+ 40 years
experience



FALCONBRIDGE



noranda



Capital Markets Expertise



**TOMMY
HUMPHREYS**
Capital Markets
+ 15 years
experience





Regional
Hydroelectric
Generation^{1,2}

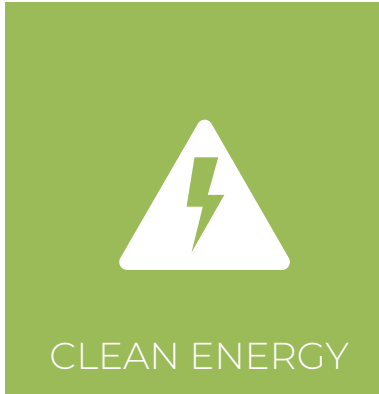
Jaurú Cascade

235.9 MW
(6 Facilities)

Juba Cascade

139.4 MW
(4 Facilities)

Governing ESG Philosophies





Protects Meridian Shareholders Equity and provides Vendors an Interest Going Forward

Payments	Requirements	Vendor Payment (USD)	Vendor Payment (Shares)	Status
1	On signing	25,000	—	Complete
2	On completion of due diligence	275,000	—	Complete
3	1st phase drilling program, subject to statutory approvals & access agreements, with independent QP review	1,750,000	—	Complete
4	Completion of NI 43-101 resource estimation	—	1,000,000	Complete
5	Positive Feasibility Study by September 2025	1,850,000	1,500,000 (or CAD 450,000 at election of vendors)	Pending
6	30 days after grant of Installation Permits (LI) by Mato Grosso State	2,250,000	2,000,000 (or CAD 600,000 at election of vendors)	Pending
7	45 days after Cabaçal mine construction finance has been secured	2,600,000	—	Pending
Total Financial Consideration (USD)		8,750,000	4,500,000	

As Meridian advances Cabaçal its value increases, the investment risk decreases, and milestone related payments are made

¹ See News Release 28th January 2022, 26th August, 3rd September 2020, & most recent MD&A



Item		
Plant Feed Mined	Mt	55.6
Waste Mined	Mt	118.1
Total Mined	Mt	173.7
Mill Throughput	Mt/annum	2.5
Total gold production	ounces	1,021,320
Total copper production	tonnes	159,926
Total silver production	ounces	1,758,923

Item		
Milled tonnes	Mt	55.6
Mill throughput	Mt/ annum	2.5
Strip Ratio	Waste: Mineralized Material	2.1
Average metallurgical recovery - Gold	%	89.7%
Average metallurgical recovery - Copper	%	92.4%
Average metallurgical recovery - Silver	%	75.2%

Item		Year 1-5	LOM
Average annual gold production (AuEq)	000 Ounces	131.1	81.2
Recovered Gold (AuEq)	000 Ounces	655.3	1,811.2
Total Cash Cost	USD/oz	644.3	804.4
Sustaining capital	USD/oz	26.4	61.8
All in Sustaining Costs ("AISC")	USD/oz	670.7	864.2

Notes:

¹ See News Release 6th March 2023


Cabaçal Initial Capital Costs

Item	US\$mm
Equipment & Packages	39.93
Materials	9.67
Construction And Erection	36.51
Others	32.14
Indirects Costs	31.43
Contingency	29.94
Total Initial Capital	179.62

Cabaçal Sustaining Capital Costs

Item	US\$mm
Process	30.53
Tailings	47.73
Indirect Costs	7.83
Owner Costs	3.91
Contingency	18.00
Total Sustaining Capital	108.00

Cabaçal Operating Costs Breakdown

Item	USD/t milled	USD/oz
Mining Costs	9.31	296.43
Labor	1.63	51.78
Power	2.07	65.80
Reagents & Consumables	2.61	82.96
Maintainence	0.97	30.72
Water/sewage	0.00	0.07
Access maintainance	0.06	1.96
Laboritory	0.38	12.13
Dry stack	2.12	67.33
G&A	2.11	67.06
Total Operating Costs	21.25	676.25

Notes:

¹ See News Release 6th March 2023

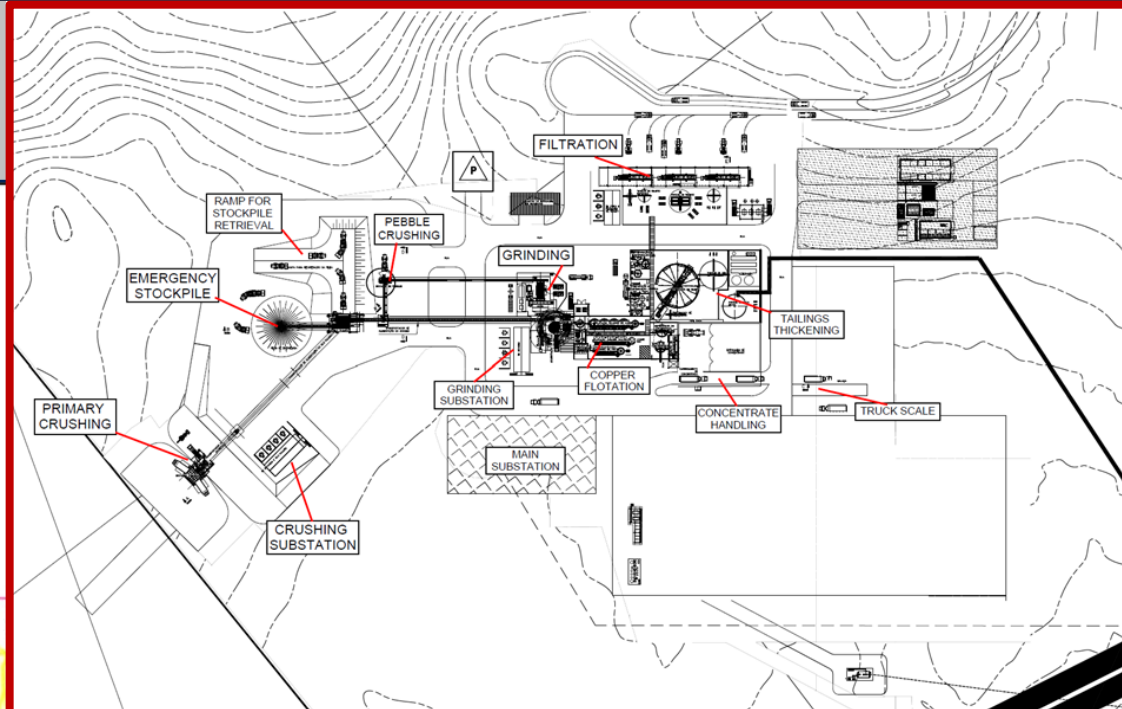
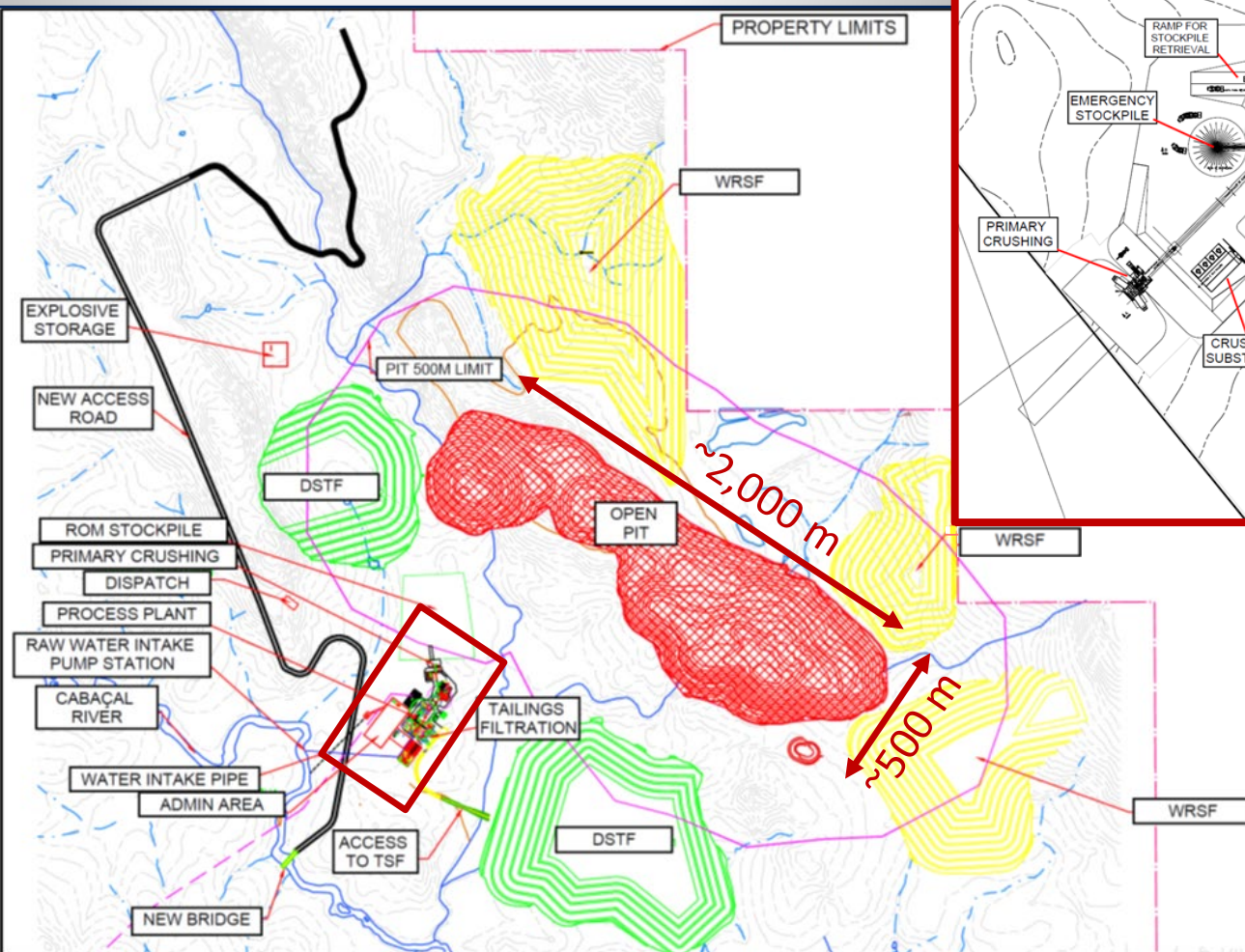
Item		Base Case		Spot Case	
Life of mine	Years	22.3		22.3	
NPV(5%)	USD million	572.5		745.2	
IRR	%	58.4%		69.7%	
Payback	Days	321		279	
Initial Capital Expenditure	USD million	180		180	
Sustaining Capital Expenditure	USD million	108		108	
Item		Average Year 1-5	Total LOM	Average Year 1-5	Total LOM
Revenue	USDmillion	208.6	2,882.1	234.9	3,254.1
Operating Costs	USDmillion	67.7	1,181.2	67.7	1,181.2
Free cash (after Tax)	USDmillion	107.3	939.8	128.7	1,216.4

Item		Base Case	Spot Case
Gold Price	USD/oz	1,650	1,841
Copper Price	USD/lb	3.59	4.13
Silver Price	USD/oz	21.35	21.35
Exchange Rate	BRL:USD	5.3	
Corporate Tax Rate	%	25%	
Social tax	%	9%	
SUDAM Tax Reduction	%	75%	
SUDAM Rax Reduction	Years	10.00	
Gold Royalty Rate	%	1.5%	
Copper Royalty Rate	%	2.0%	
Silver Royalty Rate	%	2.0%	

Notes:

¹ See News Release 6th March 2023

Optimized mine site design to minimize transport distances



Plant site design flexible for expansion opportunities

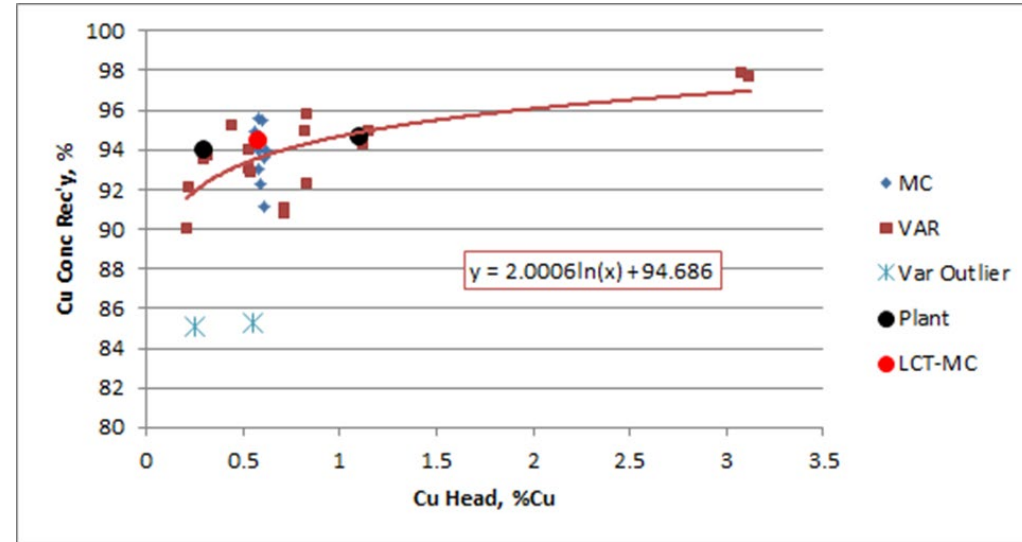
Potential to minimize cost by using depleted open pit for waste storage

Notes: ¹ See News Release 6th March 2023

90-97% Copper Recoveries

Copper Recovery

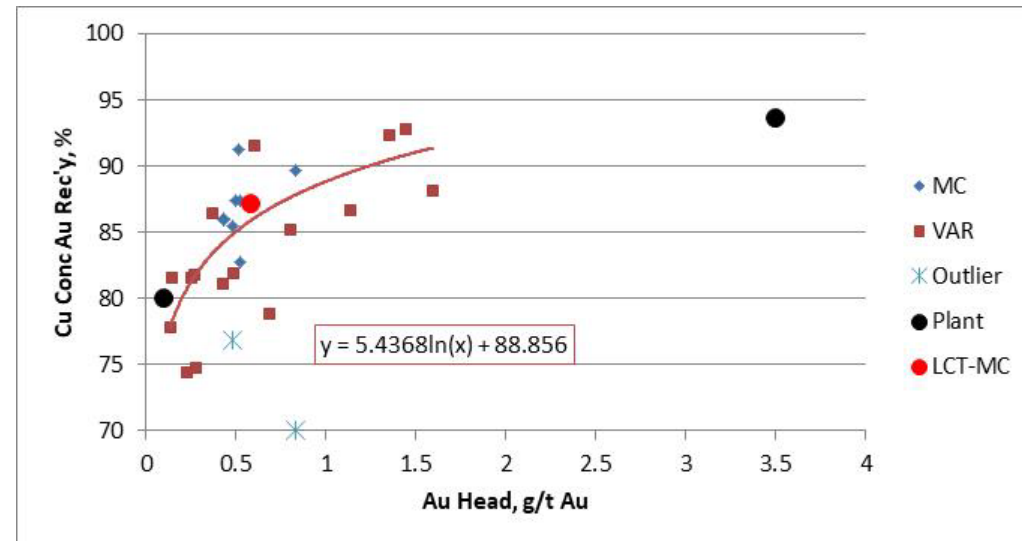
- Copper recovery exceeds 90% from 0.1% Cu head grade to 97% for >3% Cu head grade
- Historic plant data fits the trend
- High copper recoveries at low grades means viability of processing low grade mineralisation will be examined



85-95% Gold Recoveries

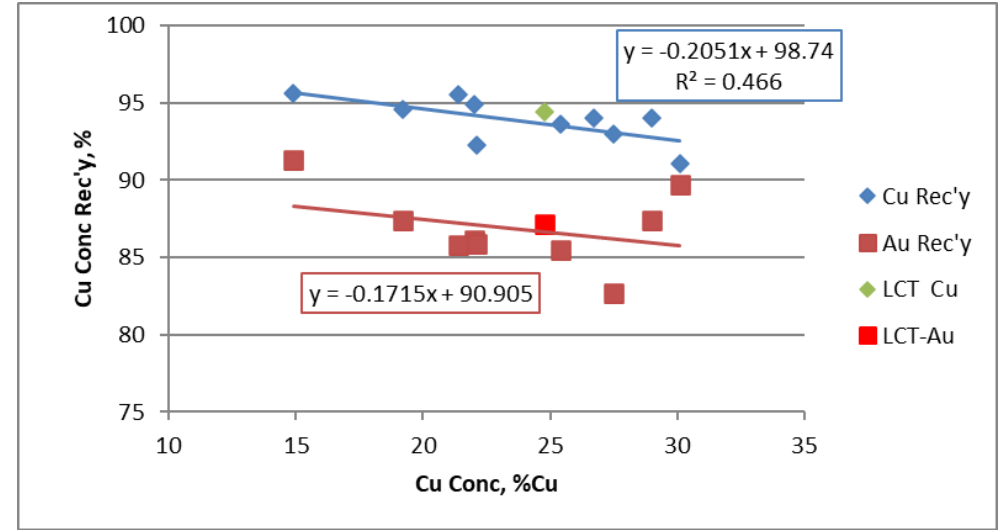
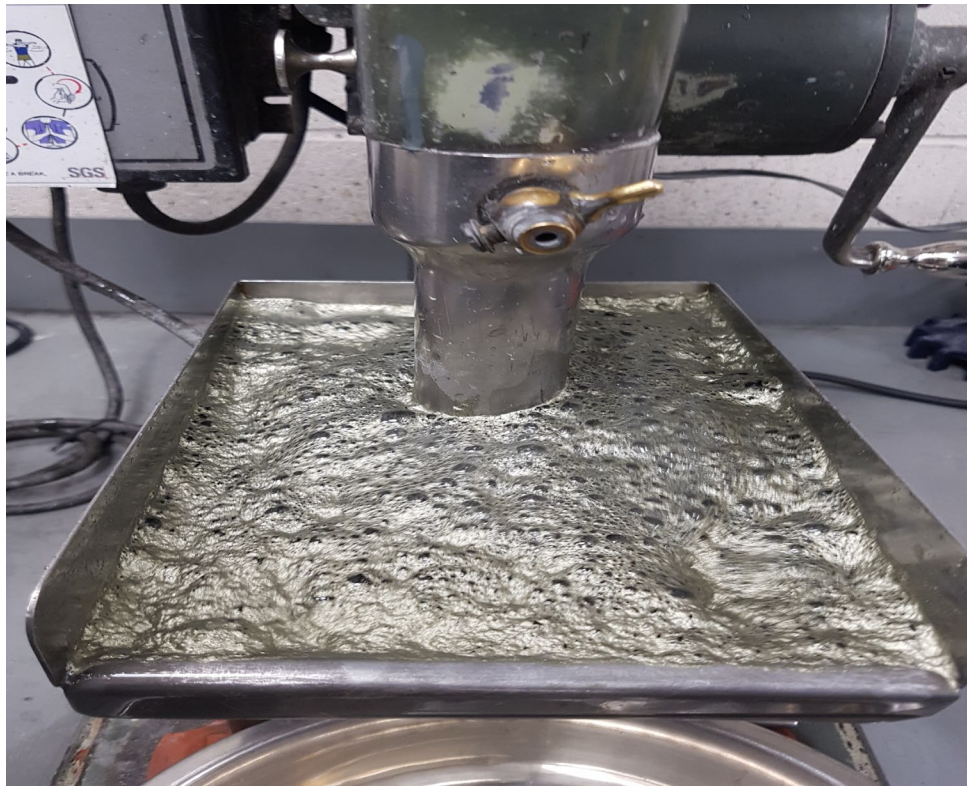
Gold Recoveries

- Gold recovery increases with head grade with recoveries of 85% for gold head grade of 0.5g/t
- Historic plant feeds of >3g/t yield recoveries close to 95%



Note: ¹ See News Release

25-29% Copper Concentrate



High-grade Copper Concentrate

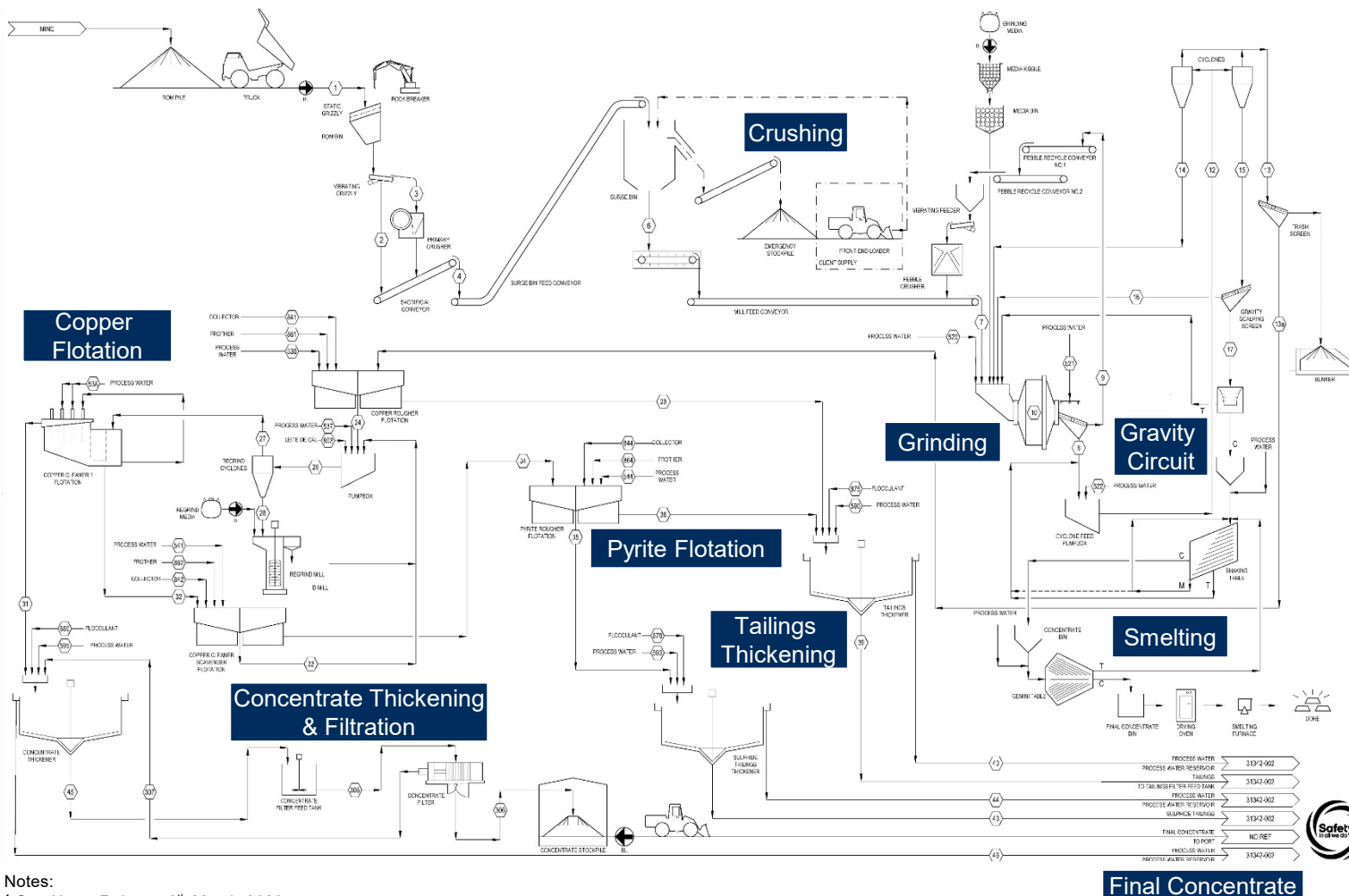
- ⚠ Economics favored by producing higher copper concentrate grades due to gentle dipping copper and gold recoveries
- ⚠ Concentrates are expected to yield high levels of gold and silver credits
- ⚠ Concentrates will not incur penalties due to very low levels of deleterious elements
- ⚠ Copper concentrate grades can be managed to customers requirements with modest impact to recovery

Next Steps

- ⚠ On-going test work for high-grade coarse gold zones recovery
- ⚠ Representative concentrate samples to be made available for smelter performance analysis

Note: ¹ See News Release

Simple process flowsheet with high recoveries



Jaw Crusher

Primary Grind ~200 microns

Gravity Circuit – 30% Au

First Cu Flotation

**Re-Grind
~40 microns**

Cleaner Circuit delivers high grade, high recovery, clean concentrate

Notes:
¹ See News Release 6th March 2023

Final Concentrate

Cabaçal Project

Cabaçal Mine

Peak Cu: 56 ppm

Cabaçal Resource:

Indicated: 52.9Mt @ 0.6g/t Au, 0.3% Cu and 1.4g/t Ag

Inferred: 10.3Mt @ 0.7g/t Au, 0.2% Cu & 1.1g/t Ag

Santa Helena Mine

Peak Cu: 36 ppm

Santa Helena Historical Resource

Initial Exploration Target

3.2 - 7.3 MT @ 3.0 – 3.2 g/t AuEq*

Exploration Target contained within only 1.4km of the ~3km prospective trend

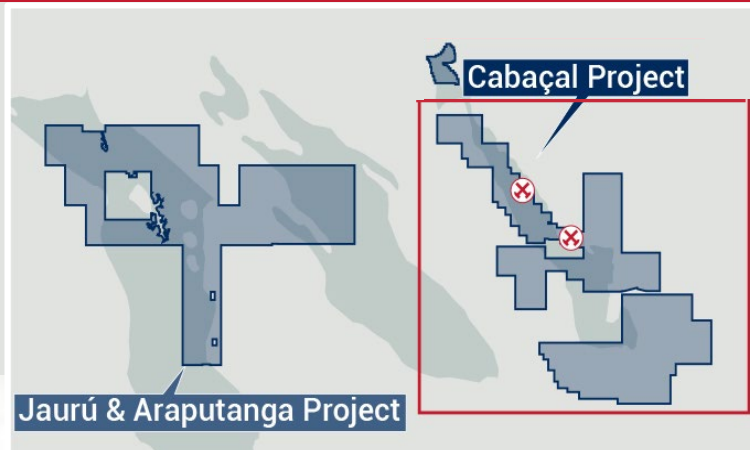
Potential high-grade metal inventory range of between 306,000 to 763,000 AuEq ounces

Alluvial Au Workings

Alvorada

Peak Cu: 164 ppm

Alvorada uncovered as Cabaçal's most significant copper in stream anomaly



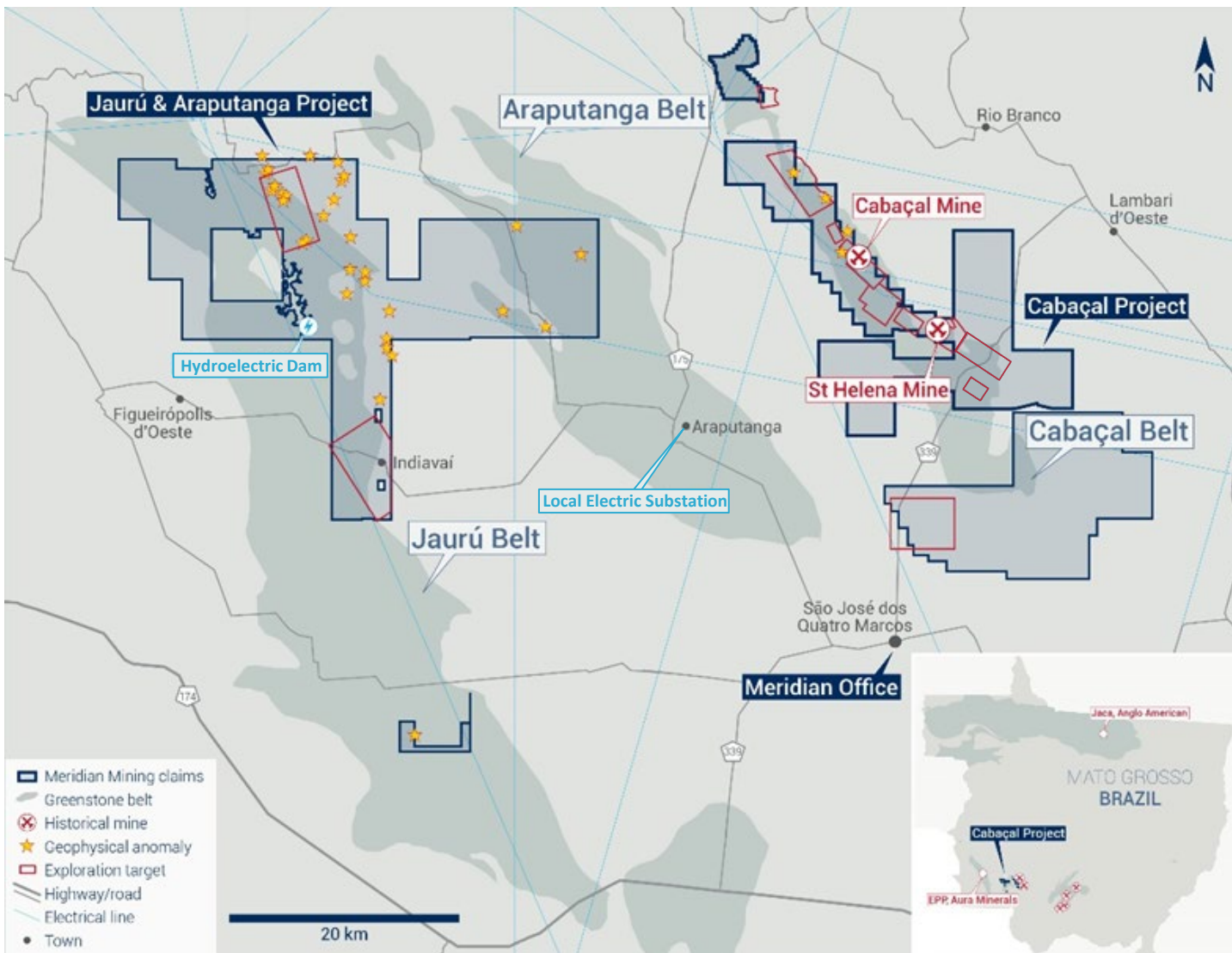
*The potential quantity and grade of an Exploration Target is conceptual in nature. There has been insufficient exploration to define a mineral resource, and it is uncertain if further exploration will result in the target being delineated as a mineral resource.

The metal equivalence formula is based on the historical Santa Helena resource report, calculated as AuEq based on gold being the dominant metal of the Cabaçal VMS camp, as the expectation is that Santa Helena's mineralization will be evaluated for processing through a centralized facility at the Cabaçal mill with the addition of a zinc circuit.

- Meridian Mining claims
- Historical mine
- BP Copper Anomalies
- World View Target

10 km

¹ See Meridian News Release 14th February 2023



928 km² tenements

**Regional
Exploration by BP
Minerals**

**Historical Cu-Au-Zn
geochemical
anomalies**

**Potential extensions
of VMS belt
stratigraphy**

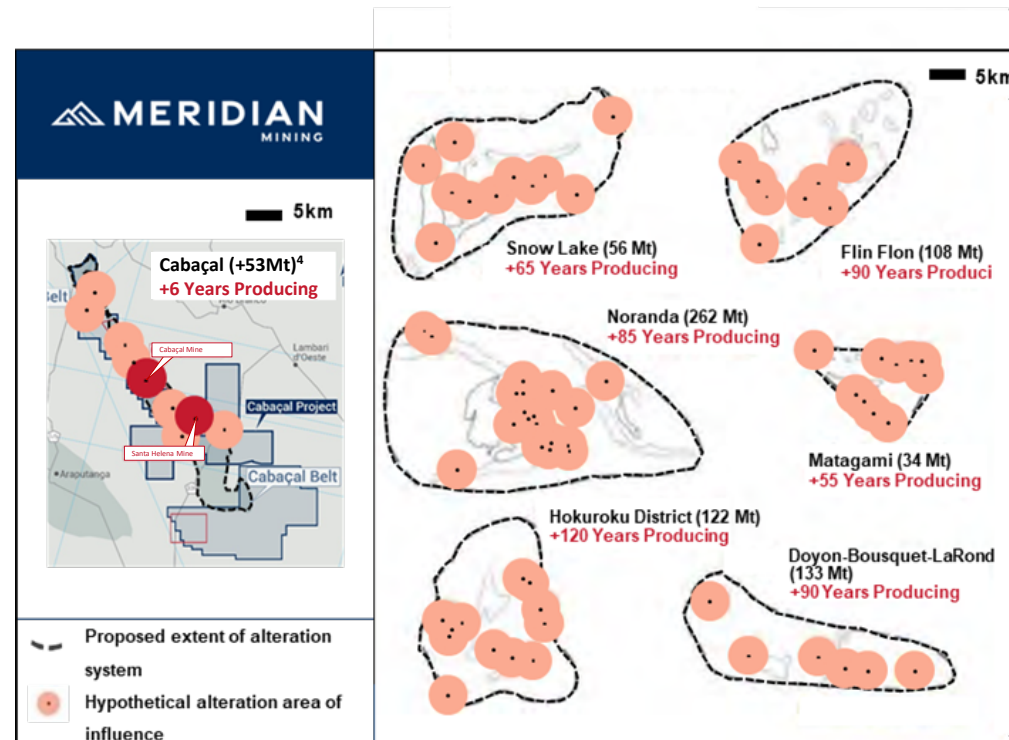
**Jaurú & Araputanga
Greenstone belts
potential to repeat
discovery success at
Cabaçal**

¹ See News Releases: 20th June 2022, 5th Jan 2022 & 12th April 2021

Cabaçal VMS Project Analogues

- ▲ Cabaçal is a camp scale VMS project underexplored and under-developed compared to analogue camps
- ▲ Cabaçal has already one giant VMS deposit defined
- ▲ VMS deposits tend to form periodically, related to hydrothermal convection cells on the ocean floor at ~4km spacings
- ▲ Cabaçal's multiple targets are consistent with deposit clustering, with potential for blind repeats
- ▲ VMS deposits are well known for their base and precious metal production
- ▲ Cabaçal VMS district has many similarities to other VMS districts such as Flin Flon (Manitoba), and Matagami (Quebec)

A junior company acquiring ownership of a VMS belt on a camp scale is a rare opportunity



▲ MAJOR VMS MINING DISTRICTS

“We are excited about the potential for more ore discovery around Cabaçal and in the belt as a whole... In a Canadian context the Cabaçal belt would be a prime long-term target for VMS type mineralization, with strong competition for ground holdings.”³

Notes:

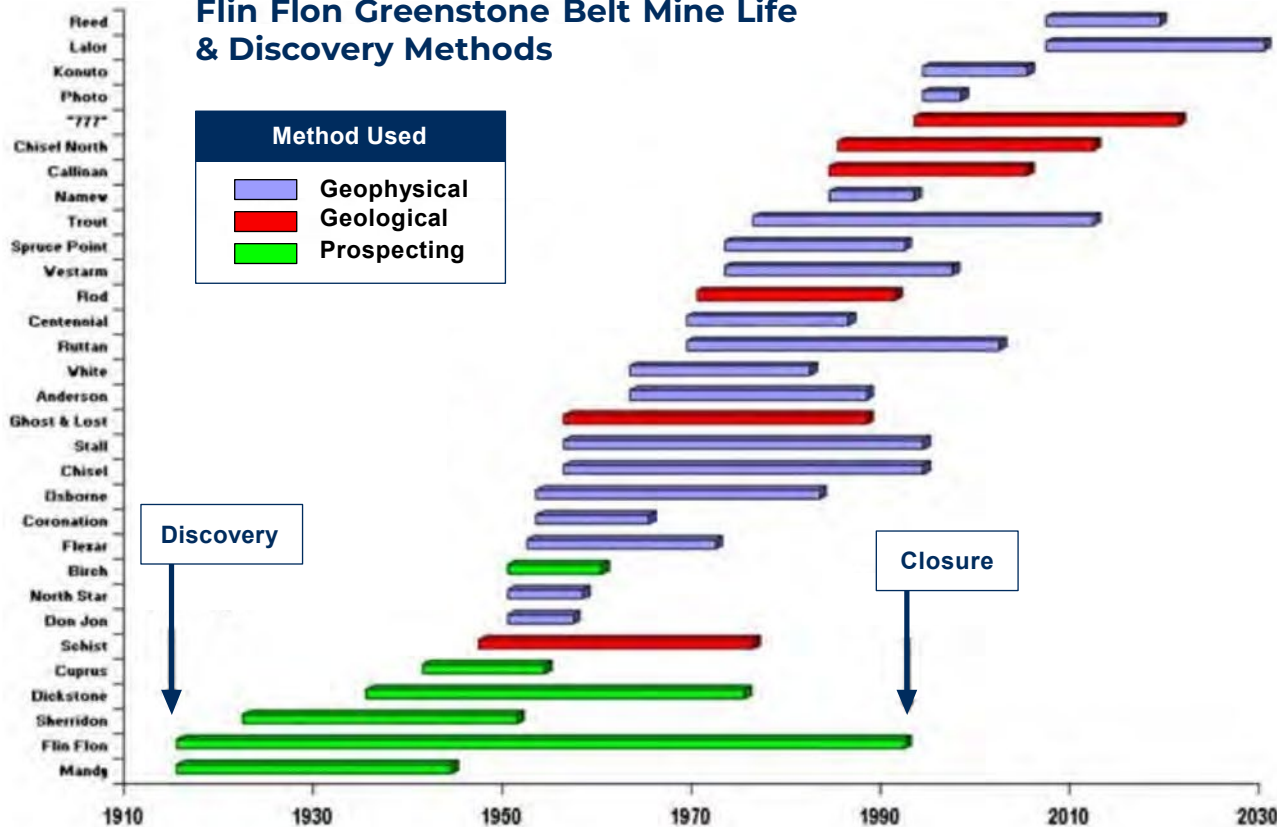
¹ Source: Akita University, Galley et al. (2007); Mercier-Langevin et al. (2007) S&P Global, Hudbay 2020 See Meridian Announcement of 26th August, 2020

² See News Release dated 26th September

³ Cabaçal-1 Mine Mato Grosso State, Brazil. Report by Dr Robert Mason and Mr. David Kerr. Queens University, Ontario, Canada

⁴ See News Release 26th September 2022

Flin Flon Greenstone Belt Mine Life & Discovery Methods



The Technical Evolution

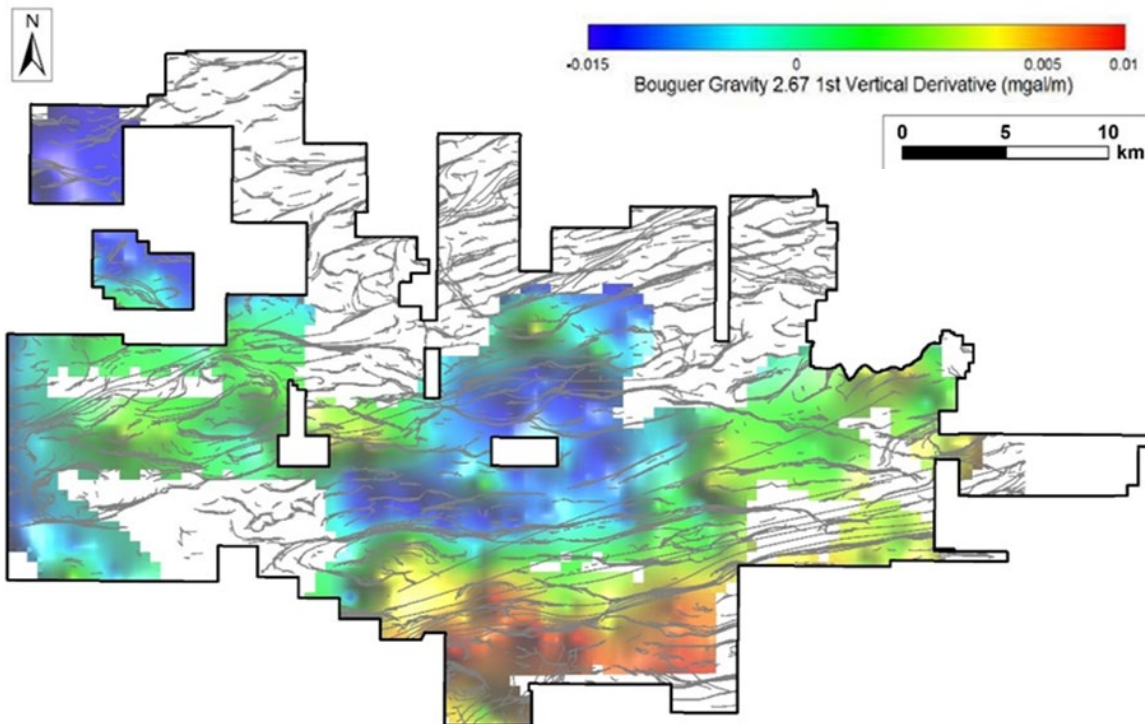
- First discovery identified through prospecting (David Collins - Tom Creighton, 1914)
- Early mapping and geochemistry may identify hydrothermal centers. Economic mineralization not necessarily present at surface
- Cyclical nature of metal prices can influence sustained exploration effort
- Modern geophysical exploration methods have successfully expanded the discovery window, through surface and down-hole survey techniques
- Improved analytical methods add increasingly sophisticated criteria for geochemical vectoring to mineralization
- Geochemical methods are supplemented by alteration mapping, maximizing information from deeper drilling to map fluid pathways, and model the hydrothermal system in 3D

^ FLIN FLON: FROM THE PROSPECTOR TO VTEM

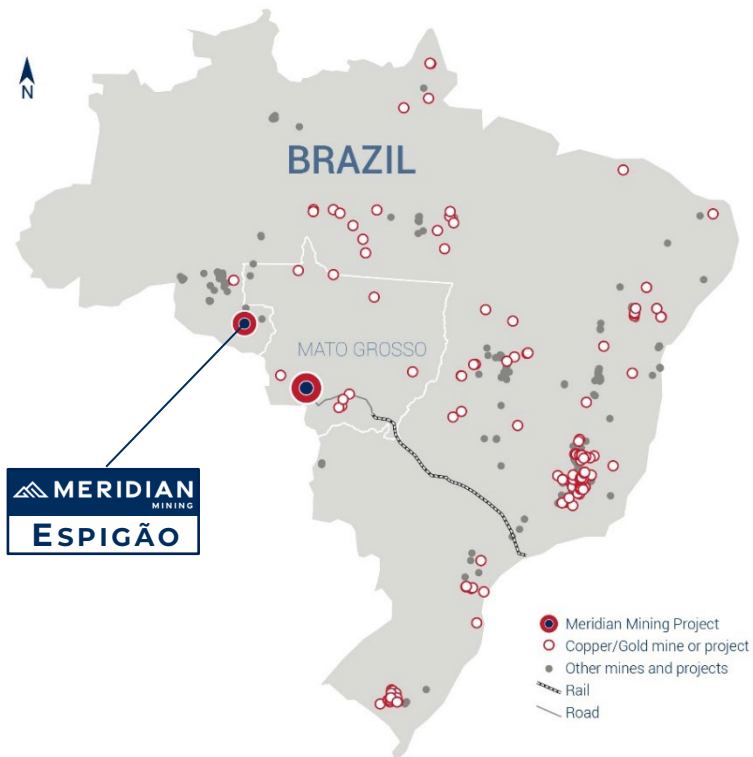
¹ Source: Gilmore and Wood, 2012 / Hudbay <https://csegrecorder.com/articles/view/geophysical-exploran-beneath-the-phanerozoic-cover-of-the-flin-flon>

Espigão Project

- Iron Oxide-Copper-Gold (“IOCG”) type deposits host the giant Cu-Au mines of Brazil and some of the biggest Cu-Au mines internationally e.g. Salobo and Olympic Dam
- Espigão hosts the prospective geochemistry comparable to large-scale IOCG type deposits
- First gravity survey 2km centered stations and testing for scale – more results pending



	Magnetic Anomaly Amplitude	Magnetic Anomaly Amplitude	Gravity Anomaly Amplitude	Gravity Anomaly Amplitude
Units	nT	km	Mgal	Km
Espigão Project	Pending	Open	15	Open
Deposit				
Olympic Dam	1,400	8 km across	17	8 km across
Wirrda Well	1,800	6 * 9 km	6	6 * 9 km
Carapateena	200-300	1.5 * 1.0 km	2 - 2.5	2 * 2 km
Prominent Hill	7,000	0.7 * 0.5 km	5	2.5 * 1 km
Ernest Henry	7,000 – 10,000	1.2 * 0.7 km	2 - 3	1.2 * 0.7 km
Eloise	1,100	0.75 * 0.25 km	1.0	1.0 * 0.5 km





MERIDIAN MINING

Meridian Mining UK S

Phone: +1 778 715 6410

Email: info@meridianmining.net.br

Corporate Address:

8th Floor 4 More London, Riverside,
London, United Kingdom, SE1 2AU

Gilbert Clark

Chief Executive Officer