



MERIDIAN
MINING



CREATING BRAZIL'S NEXT GOLD-COPPER MINER

Corporate Presentation



MNO

OTC

QX MRRDF

BÖRSE
FRANKFURT

N2E

meridianmining.co

CAUTIONARY NOTE REGARDING FORWARD-LOOKING STATEMENTS



This presentation does not constitute or form a part of, and should not be construed as an offer, solicitation or invitation to subscribe for, underwrite or otherwise acquire, any securities of Meridian Mining plc ("Meridian"), nor shall it or any part of it form the basis of or be relied on in connection with any contract or commitment whatsoever.

Readers are directed to the public disclosure of Meridian available under Meridian's profile on the System for Electronic Document Analysis and Retrieval ("SEDAR+") at www.sedarplus.ca. Information contained in this presentation was believed to be accurate at the time it was posted, but may be superseded by more recent public disclosure of Meridian. Meridian makes no representations or warranties as to the accuracy, reliability, completeness or timeliness of the information in this presentation.

Certain statements contained in this presentation may constitute "forward-looking information" within the meaning of applicable securities laws. Forward-looking information generally can be identified by words such as "anticipate", "expect", "estimate", "forecast", "planned", and similar expressions suggesting future outcomes or events. Forward-looking information is based on current expectations of management; however, it is subject to known and unknown risks, uncertainties and other factors that may cause actual results to differ materially from the forward-looking information in this presentation and include without limitation, the Company's ability to realize the results of the Cabaçal gold-copper-silver deposit (the "Cabaçal Project") preliminary feasibility study (the "2025 Cabaçal PFS"); the anticipated timing for production; that start-up schedule will be fulfilled; that anticipated funding will be available; all upside potential anticipated for the Cabaçal Project; that the anticipated mitigation approaches will have the anticipated results; the results of the 2025 Cabaçal PFS, including, but not limited to, the anticipated post-tax NPV and IRR at the Cabaçal Project, the anticipated average annual production and cash flow, the anticipated Cabaçal Project start date, the probability of the additional opportunities to be able to convert more resource into reserves, the process plant gold recovery estimates, the anticipated number of people that will be employed to restart the Cabaçal Project, the anticipated development and management of the Cabaçal tailings, the remaining expenditure requirements, the projected sustaining capital requirements, the key assumptions, parameters and methods used to estimate the mineral resource and mineral reserve estimates relating to the 2025 Cabaçal PFS, the operational and economic results of the 2025 Cabaçal PFS, including grade or quality of mineral deposits, and the LOM projections and estimates, timing and successful completion of the timing and successful completion of the Cabaçal feasibility study, the timing and successful completion of the first resource estimate for Santa Helena and the Company's future expectations, objectives and plans. Readers are cautioned not to place undue reliance on forward-looking information.

Forward-looking information involve numerous risks and uncertainties, and actual results might differ materially from results suggested in any forward-looking information. These risks and uncertainties include, among other things, market volatility; the state of the financial markets for the Company's securities; fluctuations in commodity prices; changes in the Company's business plans. Forward-looking information is based on a number of key expectations and assumptions, including without limitation, the timing of the markets; the accuracy and reliability of technical data, forecasts, estimates and studies, including the 2025 Cabaçal PFS; estimates of mineral resources and mineral reserves; anticipated costs and expenditures; future results of operations; ability to satisfy power infrastructure; availability and ability to procure personnel, machinery, supplies, and equipment from local sources where possible; the characteristics of the Cabaçal Project; delays in operations due to permit grants; environmental and safety risks; the relationship between the Company and the local communities and its business partners; ability to operate in a safe and effective manner; the success of exploration, development and processing activities; that the Company will continue with its stated business objectives and its ability to raise additional capital to proceed. Although management of the Company has attempted to identify important factors that could cause actual results to differ materially from those contained in forward-looking information, there may be other factors that cause results not to be as anticipated, estimated or intended. There can be no assurance that such forward-looking information will prove to be accurate, as actual results and future events could differ materially from those anticipated in such forward-looking information. Accordingly, readers should not place undue reliance on forward-looking information. Readers are cautioned that reliance on such information may not be appropriate for other purposes. Additional information about risks and uncertainties are disclosed under the heading "Risk Factors" in Meridian's most recent Annual Information Form which is available for download under Meridian's profile on SEDAR+ at www.sedarplus.ca.

The forward-looking information contained herein is expressly qualified in its entirety by this cautionary statement. Forward-looking information reflects management's current beliefs and is based on information currently available to Meridian. The forward-looking information is made as of the date of this presentation and Meridian assumes no obligation to update or revise such information to reflect new events or circumstances, except as may be required by applicable law. For more information on Meridian, investors should review Meridian's continuous disclosure filings that are available on SEDAR+ at www.sedarplus.ca.

FUTURE ORIENTED FINANCIAL INFORMATION

To the extent any forward-looking information in this presentation constitutes "future-oriented financial information" or "financial outlooks" within the meaning of applicable Canadian securities laws, such information is being provided to demonstrate the anticipated market penetration and the reader is cautioned that this information may not be appropriate for any other purpose and the reader should not place undue reliance on such future-oriented financial information and financial outlooks. Future oriented-financial information and financial outlooks, as with forward-looking information generally, are, without limitation, based on the assumptions and subject to the risks set out above under the heading "Forward Looking Statements". Meridian's actual financial position and results of operations may differ materially from management's current expectations and, as a result, Meridian's revenue and expenses may differ materially from the revenue and expenses profiles provided in this presentation. Such information is presented for illustrative purposes only and may not be an indication of Meridian's actual financial position or results of operations.

MARKET RESEARCH AND PUBLIC DATA

This presentation contains or references certain market, industry and peer group data which is based upon information from independent industry publications, market research, analyst reports and surveys and other publicly available sources. Although Meridian believes these sources to be generally reliable, such information is subject to interpretation and cannot be verified with complete certainty due to limits on the availability and reliability of raw data, the voluntary nature of the data gathering process and other inherent limitations and uncertainties. Meridian has not independently verified any of the data from third party sources referred to in this presentation and accordingly, the accuracy and completeness of such data is not guaranteed. This presentation is confidential and is being provided to you solely for your information and may not be reproduced, in whole or in part, in any form or forwarded or further distributed to any other person. Any forwarding, distribution or reproduction of this document in whole or in part is unauthorized. By accepting and reviewing this presentation, you acknowledge and agree (i) to maintain the confidentiality of this document and the information contained herein, (ii) to protect such information in the same manner you protect your own confidential information, which shall be at least a reasonable standard of care and (iii) to not utilize any of the information contained herein except to assist with your evaluation of Meridian.

The 2025 Cabaçal PFS has an effective date of March 10, 2025, and was prepared for Meridian by the following independent Qualified Persons, as such term is defined by National Instrument 43-101 – Standards of Disclosure for Mineral Projects ("NI 43-101"): Tommaso Roberto Raponi (P. Eng), Principal Metallurgist with Ausenco Engineering Canada ULC; Scott Elfen (P. E.), Global Lead Geotechnical and Civil Services with Ausenco Engineering Canada ULC; John Anthony McCartney, C.Geol., Ausenco Chile Ltda.; Porfirio Cabaleiro Rodriguez (Engineer Geologist FAIG), of GE21 Consultoria Mineral; Leonardo Soares (PGeo, MAIG), Senior Geological Consultant of GE21 Consultoria Mineral; Norman Lotter (Mineral Processing Engineer; P.Eng.), of Flowsheets Metallurgical Consulting Inc.; and, Juliano Felix de Lima (Engineer Geologist MAIG), of GE21 Consultoria Mineral.

Mr Erich Marques, B.Sc., FAIG, Chief Geologist of Meridian and a Qualified Person as defined by NI 43-101, has reviewed the 2025 Cabaçal PFS on behalf of Meridian and is responsible for other technical information in this presentation (information not directly related to the 2025 Cabaçal PFS).

The 2025 Cabaçal PFS is summarized in a technical report which is available on the Company's website at www.meridianmining.co and available for download under Meridian's profile on SEDAR+ at www.sedarplus.ca

DEVELOPING AN EXCEPTIONAL PROJECT

CABAÇAL - PRODUCTION EXECUTION

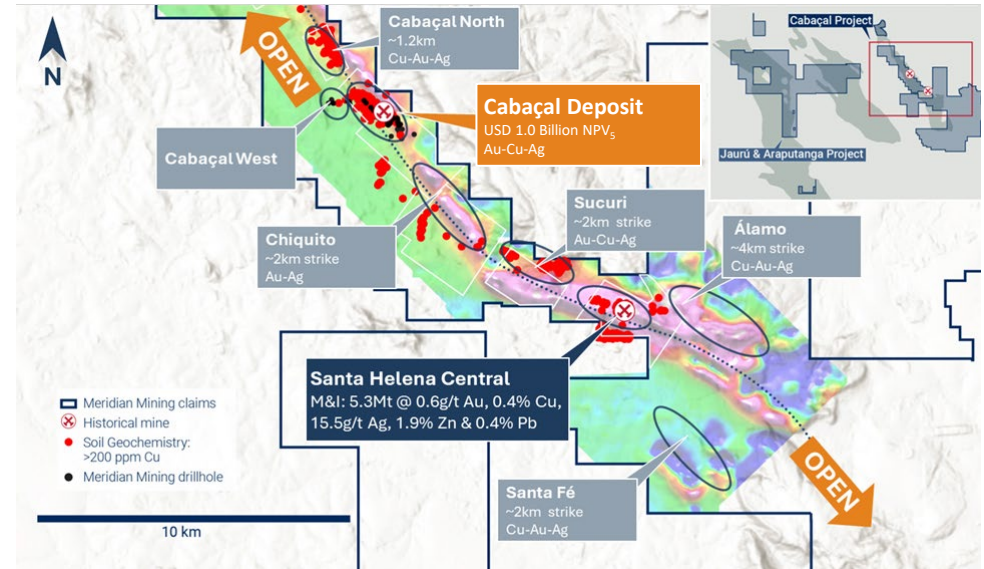
- ▲ Fully financed to Decision to Mine, and accelerated development programmes
- ▲ PFS exceptional economics (Base case pricing):
 - ▲ Low initial capex - USD 248 million
 - ▲ USD 1.0 billion NPV₅ & 61.2% IRR
- ▲ Executable project:
 - ▲ In-house execution team engaged
 - ▲ Preliminary Licence approval

SANTA HELENA - GROWTH POTENTIAL

- ▲ Santa Helena Central Maiden Resource declared
- ▲ VMS system open in all direction
- ▲ On-going drill program

BELT SCALE EXPLORATION UPSIDE

- ▲ 50km of discovery potential at Cabaçal
- ▲ Multiple new targets defined
- ▲ CAD 10 million exploration budget



Notes: ¹ See “Cabaçal Gold-Copper Project NI 43-101 Technical Report and Pre-feasibility Study” - 10th March 2025 & Press Release 20th January 2026

POST-TAX NPV₅ (USDM) AND IRR (%) SENSITIVITY TO METALS PRICES

			Gold Price																
							Base												
			1,500		2,000		2,119		2,500		3,000		3,500		3,750		4,000		
			NPV	IRR	NPV	IRR	NPV	IRR	NPV	IRR	NPV	IRR	NPV	IRR	NPV	IRR	NPV	IRR	
Copper Price		3.50	578	42.2%	795	53.5%	847	56.1%	1,012	64.1%	1,229	74.0%	1,446	83.6%	1,560	88.5%	1,663	92.7%	
		4.00	682	46.7%	899	57.5%	950	60.0%	1,116	67.7%	1,333	77.4%	1,549	86.8%	1,663	91.6%	1,766	95.7%	
		Base	4.16	715	48.0%	932	58.7%	984	61.2%	1,149	68.9%	1,366	78.5%	1,582	87.8%	1,696	92.6%	1,799	96.6%
		4.50	785	50.8%	1,002	61.3%	1,054	63.7%	1,219	71.2%	1,436	80.7%	1,653	89.9%	1,766	94.7%	1,870	98.6%	
		5.00	889	54.8%	1,106	65.0%	1,157	67.3%	1,323	74.7%	1,539	83.9%	1,756	92.9%	1,870	97.6%	1,973	101.5%	
		5.50	992	58.6%	1,209	68.5%	1,261	70.8%	1,426	78.0%	1,643	87.1%	1,860	95.9%	1,973	100.5%	2,076	104.3%	
		6.00	1,096	62.3%	1,312	71.9%	1,364	74.2%	1,529	81.2%	1,746	90.1%	1,963	98.8%	2,077	103.4%	2,180	107.1%	

Capex: USD 248 M

Base NPV₅/Capex: 3.97x

Base Payback: 17 Months

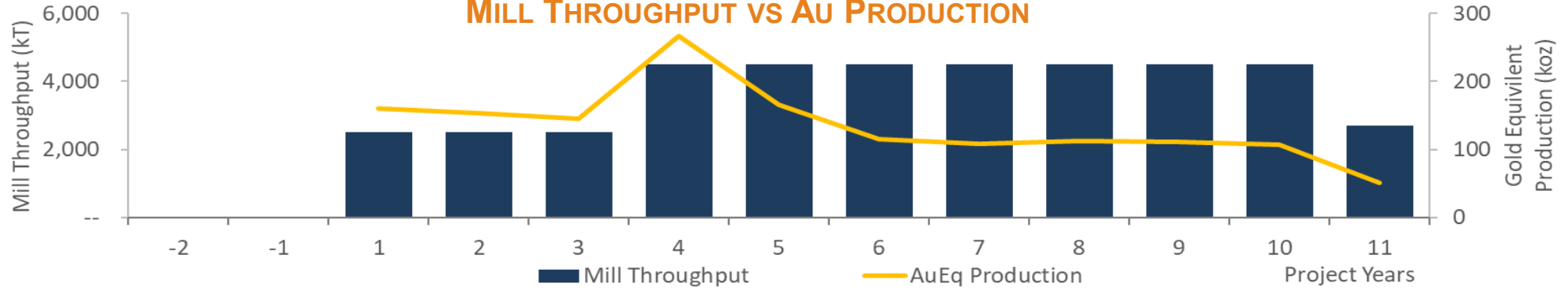
Production: 141,000 oz AuEq pa

AISC: USD 742 / oz AuEq

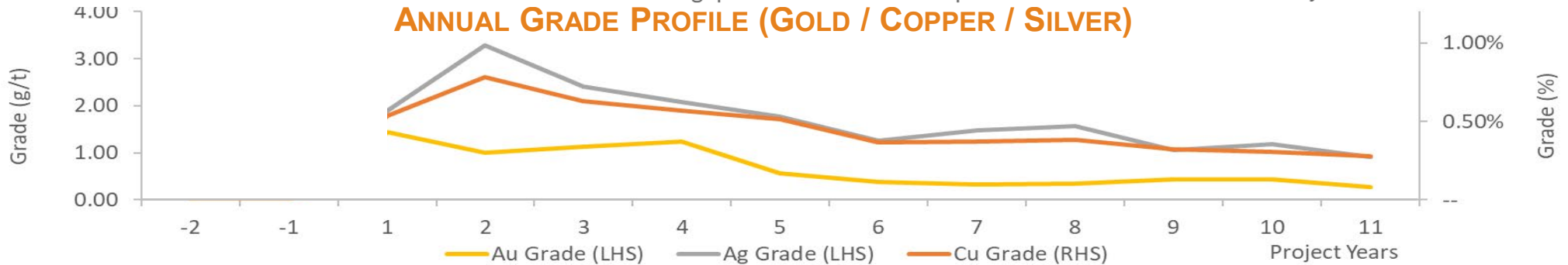
LOM Base Revenue: USD 3.05 B

Notes: 1 See "Cabaçal Gold-Copper Project NI 43-101 Technical Report and Pre-feasibility Study" - 10th March 2025

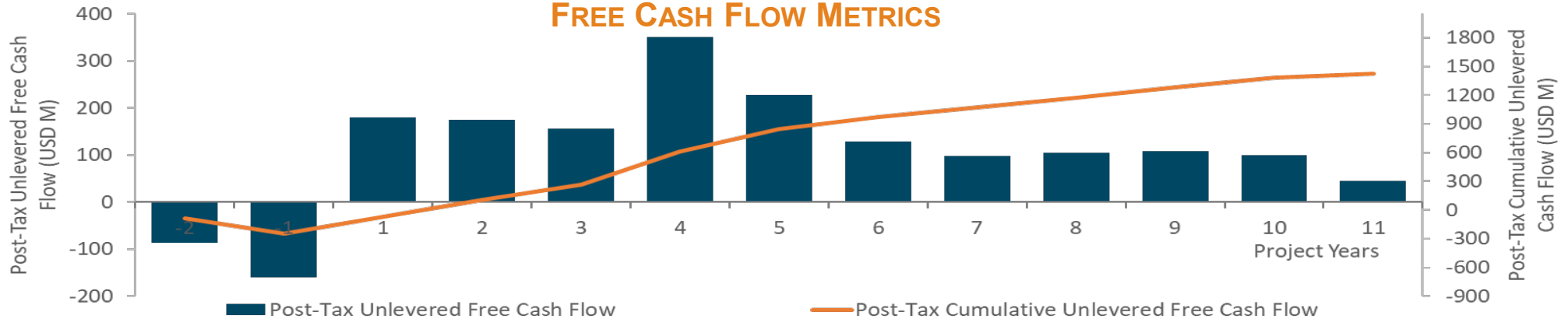
MILL THROUGHPUT VS AU PRODUCTION



ANNUAL GRADE PROFILE (GOLD / COPPER / SILVER)



FREE CASH FLOW METRICS



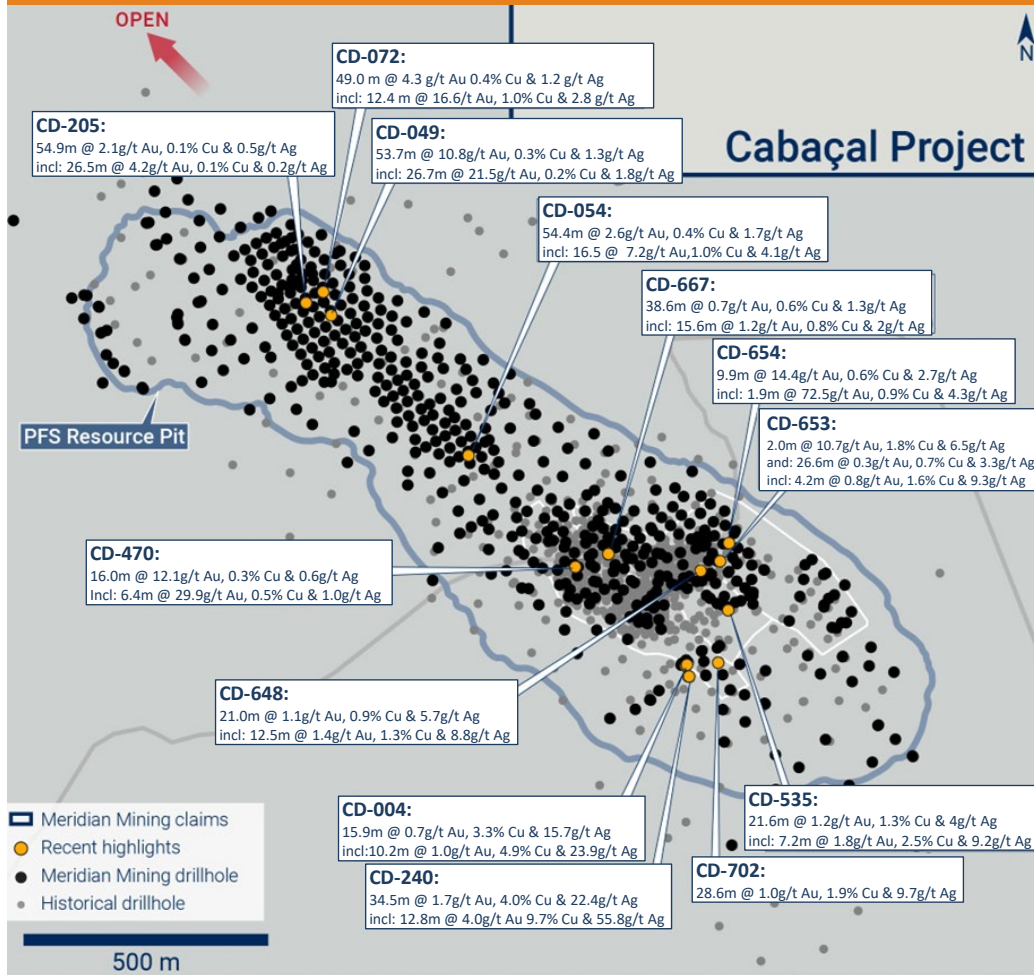
Notes: ¹ See “Cabaçal Gold-Copper Project NI 43-101 Technical Report and Pre-feasibility Study” - 10th March 2025

BENCHMARKING PFS VS BRAZILIAN PEERS

Description	Units	Cabaçal*	Planalto**	Castelo de Sonhos	Monte do Carmo	Boroborema	Matupa	Tocantinzinho	Mara Rosa	Tucuma**
Project Metrics	Date	04 March 2025	21 October 2025	05 May 2025	15 December 2023	30 August 2023	05 October 2022	09 February 2022	31 December 2021	31 August 2021
Mine Life	(years)	10.6	18.0	11.0	9.0	11.3	7.0	10.5	10.0	12.0
Pre-Strip	(Mt)	10.3	9.66	0.0	16.0	7.2	2.2	9.7	4.1	13.2
Strip Ratio	(x)	2.3	2.0	9.0	7.8	3.3	1.7	3.4	4.4	3.7
Average Au Grade	(g/t)	1.16 (AuEq)	0.56% (CuEq)	1.10	1.62	1.20	1.05	1.31	1.18	0.83% (Cu)
P80 Grind Size	(µm)	200	75	105	106	106	125	125	53	106
Bond Work Index	(kWh/t)	11.2	18.5	13.5	17.5	11.9	15.5	18.2	13.0	15.8
Abrasion Index	(g)	0.28	Not disclosed	0.37	0.49	0.12	0.31	0.57	0.34	0.42
Processing Time	(hours)	<1.5	Not disclosed	36	24	30	24	36	36	<1.5
Process		Crush	Crush	Crush	Crush	Crush	Crush	Crush	Crush	Crush
		Grind	Grind	Grind	Grind	Grind	Grind	Grind	Grind	Grind
		Gravity	Float	Gravity	Gravity	Gravity	Gravity	Gravity	Gravity	Gravity
		Float		CIL	Float	CIL	CIL	Float	CIL	Float
Recovery	(%)	Au - 87.6% Cu - 92.3%	Cu - 90.9% Au - 51.1%	Au - 98.0%	Au - 95.3%	Au - 92.1%	Au - 95.0%	Au - 90.9%	Au - 89.9%	Cu - 91.3%
Throughput	(Mt per annum)	2.5	8.0	3.6	1.9	2.0	1.3	4.7	2.5	4.0
Production	(Au oz/annum)	141,000 (AuEq)	30,025 (Cu t)	121,000	95,212	65,000	41,889	174,700	80,000	27,000 (Cu t)
Exchange Rate	(BRL:USD)	5.99	5.60	5.75	5.00	4.93	5.20	5.20	5.05	5.00
CAPITAL COST										
Mine	(USDm)	30.1	28.5	0.0	20.3	28.0	13.5	41.1	9.3	83.2
Fleet	(USDm)	Contractor	Contractor	37.3	29.7	Contractor	Contractor	59.1	Contractor	Contractor
Process Plant	(USDm)	98.9	238.5	187.2	71.8	86.3	38.9	86.0	112.9	67.0
Infrastructure	(USDm)	33.7	56.4	11.2	14.3	20.3	20.5	59.6	56.4	88.0
Power	(USDm)	5.7	20.6	10.8	11.2	23.0	13.9	56.2	13.8	4.0
Direct Cost	(USDm)	168.4	344.0	246.5	147.3	157.5	86.8	302.0	192.4	242.1
Indirect	(USDm)	14.0	29.5	5.20	12.10	16.4	4.19	84.86	8.9	18.62
EPCM	(USDm)	15.8	47.3	19.25	-	10.3	4.79	15.70	-	16.05
Owner's Costs	(USDm)	8.4	33.7	10.50	6.20	2.4	4.03	17.00	18.4	14.77
Contingency	(USDm)	41.3	90.9	49.3	15.8	9.6	7.3	38.3	17.8	23.4
Contingency (%)	(USDm)	20.0%	20.0%	20.0%	9.5%	5.2%	7.3%	9.1%	8.1%	8.0%
Initial Capital Cost	(USDm)	247.9	545.4	296.0	181.4	196.3	107.1	457.8	237.4	315.0
Sustaining & Expansion Capital Costs	(USDm)	110.0	170.0	41.7	81.0	18.7	14.9	82.9	63.4	196.0
Initial Capex / Tonne Throughput	(USD/t)	99.2	68.2	82.2	94.5	98.1	82.4	97.4	95.0	78.8
OPERATING COSTS										
Mining Cost	(USD/t mined)	2.8	3.0	2.0	2.0	2.4	1.5	2.4	2.0	2.1
Mining Cost	(USD/t milled)	8.5	8.3	20.1	13.7	12.3	3.8	9.5	10.0	9.5
Processing Costs	(USD/t milled)	9.5	7.8	11.1	10.6	13.5	15.4	8.8	10.9	7.7
G&A	(USD/t milled)	2.0	1.6	1.7	2.4	1.3	1.6	3.3	1.2	1.5
LOM Opex / Tonne	(USD/t milled)	20.1	17.8	32.9	29.8	27.1	22.7	23.7	23.1	18.6
All-in-Sustaining-Costs ("AISC")	(USD/oz)	742 (USD/oz AuEq)	2.69 (USD/lbs Cu)	1111 (USD/oz Au)	686.6 (USD/oz Au)	867.36 (USD/oz Au)	762 (USD/oz Au)	681 (USD/oz Au)	681.7 (USD/oz Au)	1.81 (USD/lbs Cu)

Notes:
 1 See "Cabaçal Gold-Copper Project NI 43-101 Technical Report and Pre-feasibility Study" - 10th March 2025
 2 Source CIBC Data, Market Data / Company Data

CABAÇAL'S DRILL RESULTS



MILL LAYOUT



ETHOS

“Cabaçal's engineering is not simply to build a plant, but a production hub for us to operate.”

Vitor Belo

Chief Development Officer

Notes:

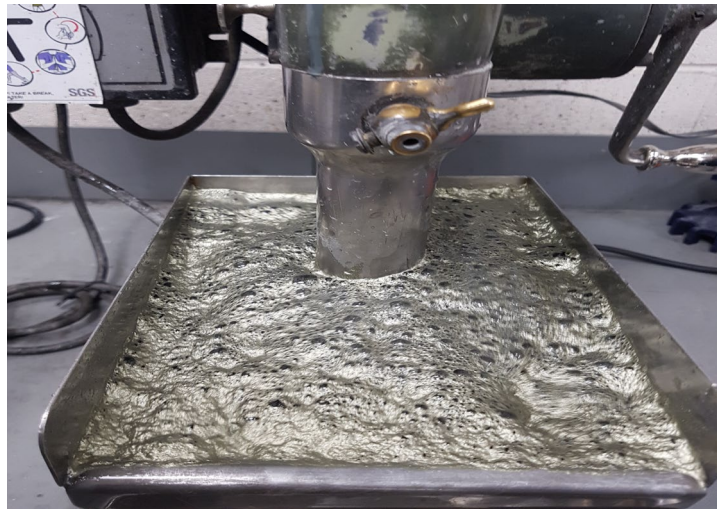
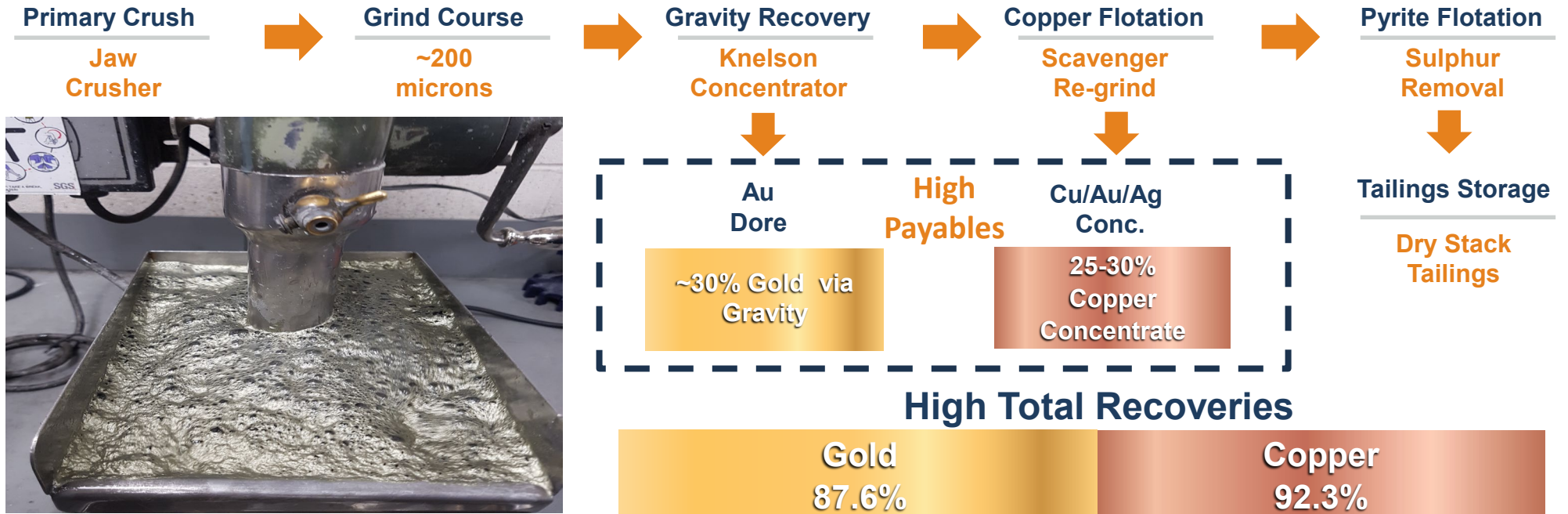
¹ See “Cabaçal Gold-Copper Project NI 43-101 Technical Report and Pre-feasibility Study” - 10th March 2025

² See Press Releases for further details

RESERVE STATEMENT - 89% PROVEN CATEGORY

Reserve Classification	Average Value				Metal Content		
	Mass	Au	Cu	Ag	Au	Cu	Ag
	Mt	g/t	%	g/t	k oz	kt	k oz
Proven	37.11	0.67	0.45	1.64	797	166	1,963
Probable	4.59	0.36	0.40	1.57	53	18	232
Proven & Probable	41.70	0.63	0.44	1.64	850	184	2,194

SIMPLE ORE FLOWSHEET WITH HIGH RECOVERIES & PAYABLES



Notes: ¹ See “Cabaçal Gold-Copper Project NI 43-101 Technical Report and Pre-feasibility Study” - 10th March 2025

RESOURCE UPDATE

Classification	Mass Mt	Average Value			Material Content		
		Au g/t	Ag g/t	Cu %	Au koz	Ag koz	Cu kt
Measured	64.69	0.57	1.34	0.34	1,175.68	2,787.77	221.61
Indicated	5.41	0.48	0.99	0.22	83.54	172.59	11.87
Total	70.10	0.56	1.31	0.33	1,259.22	2,960.36	233.48

 **Resource update to be included in DFS update**

 **DFS Target for Q4 2026**

**Metals
Increase**

Gold
↑ 39.2%

Silver
↑ 19.3%

Copper
↑ 14.2%

METALLURGY

	Au g/t	Cu %	Ag g/t
Cabaçal updated M&I resource grade	0.56	0.33	1.31
DFS metal recovery %	88.35	90.97	72.51
PFS metal recovery %	85.52	90.97	51.97
DFS metal recovery difference	2.83%	*	20.54%

* As the DFS's metallurgical program used samples grading +0.5% Cu, for grades below 0.5% Cu the PFS's metal recoveries were applied. Therefore, with the Cabaçal resource update's average copper grade of 0.33% the average copper metal recoveries are the same for both the DFS and the PFS

 **DFS Metallurgical program completed**

 **Samples of first 5 years of production**

 **Maximising recovery through:**

 **150 micron grind size**

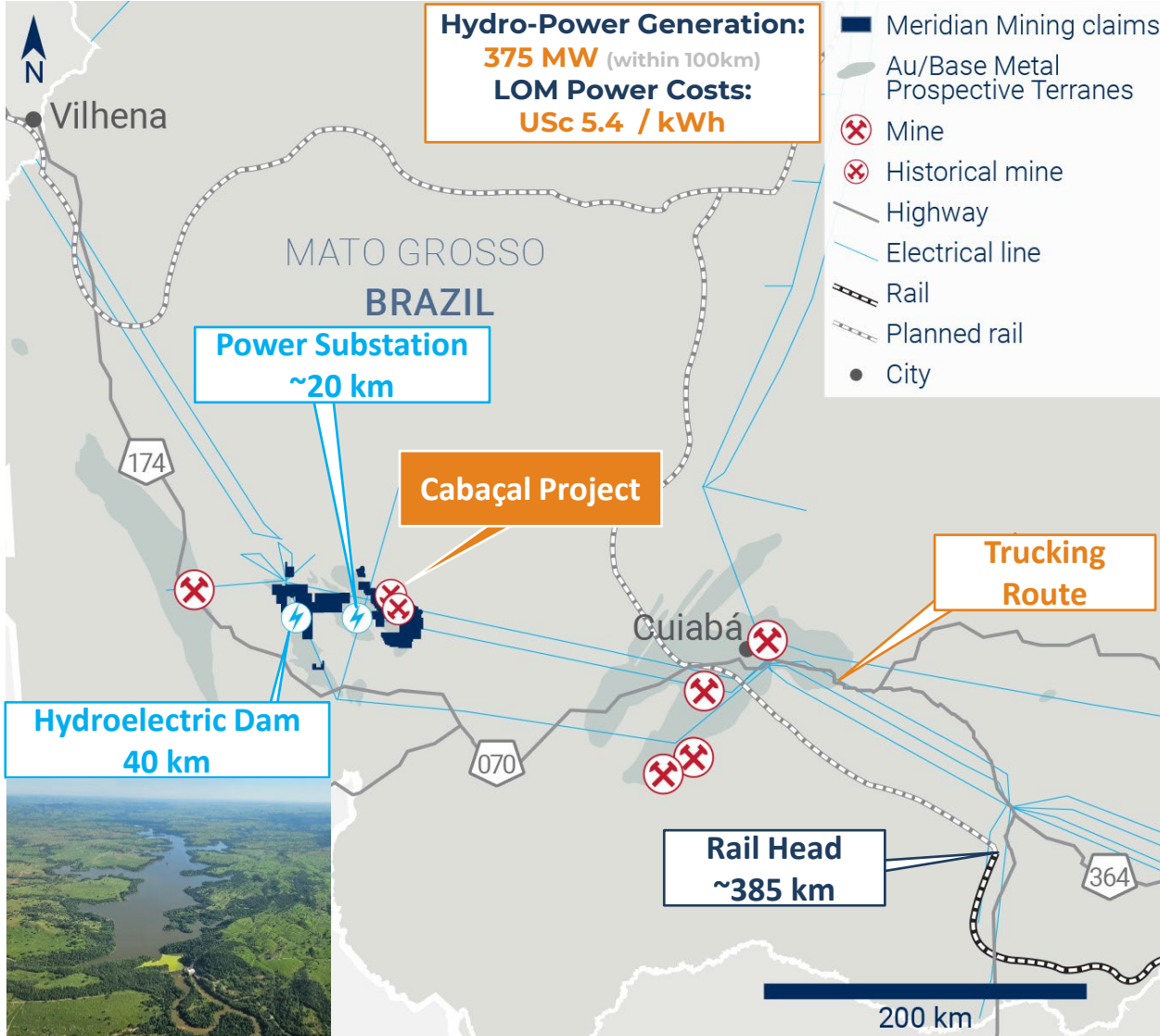
 **Increased collector dosage**

 **Work to be included in DFS**

Notes:

¹ See Press Releases 20th January 2026

UTILIZING EXISTING INFRASTRUCTURE

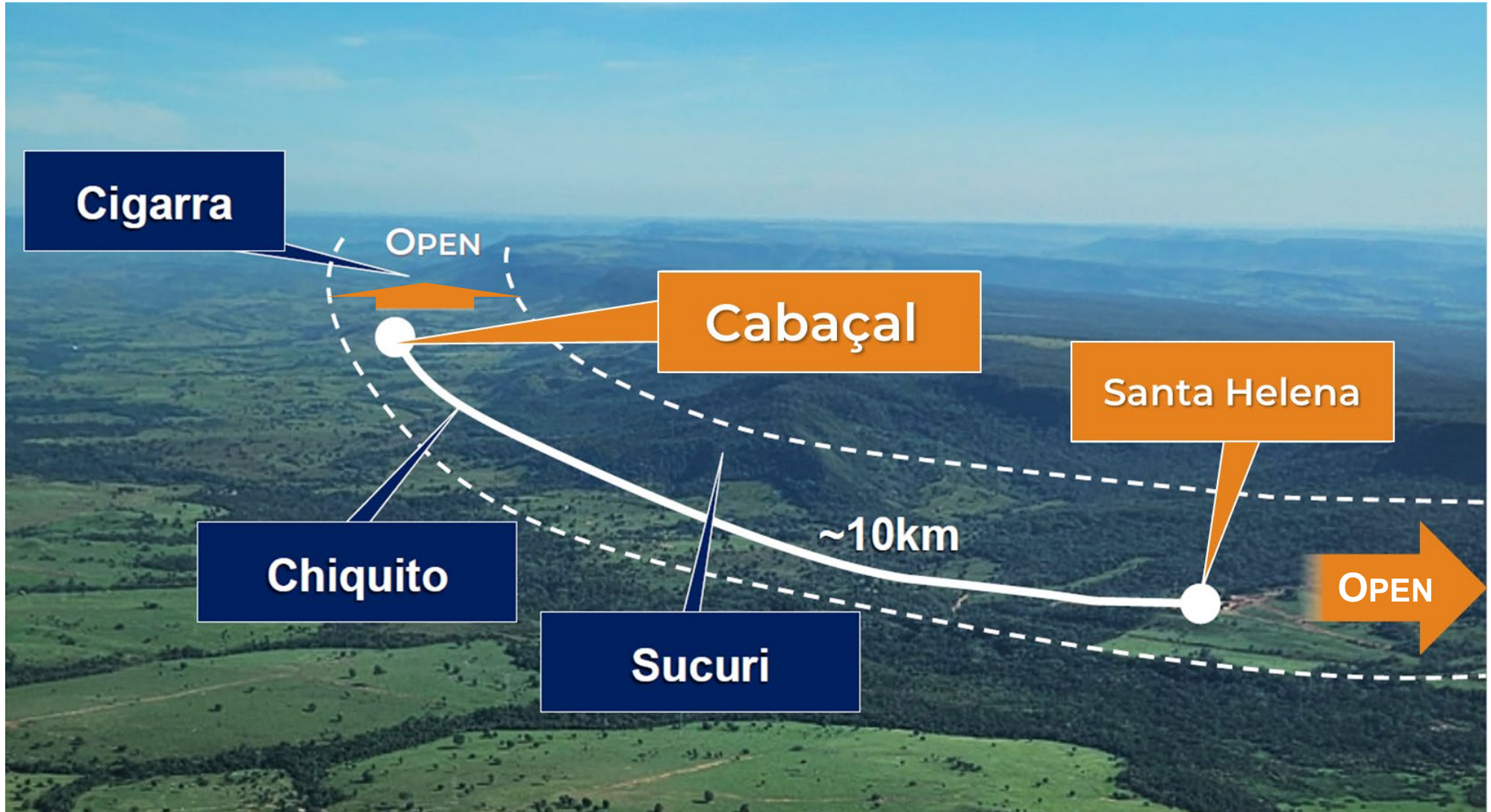


Notes: 1 See "Cabaçal Gold-Copper Project NI 43-101 Technical Report and Pre-feasibility Study" - 10th March 2025



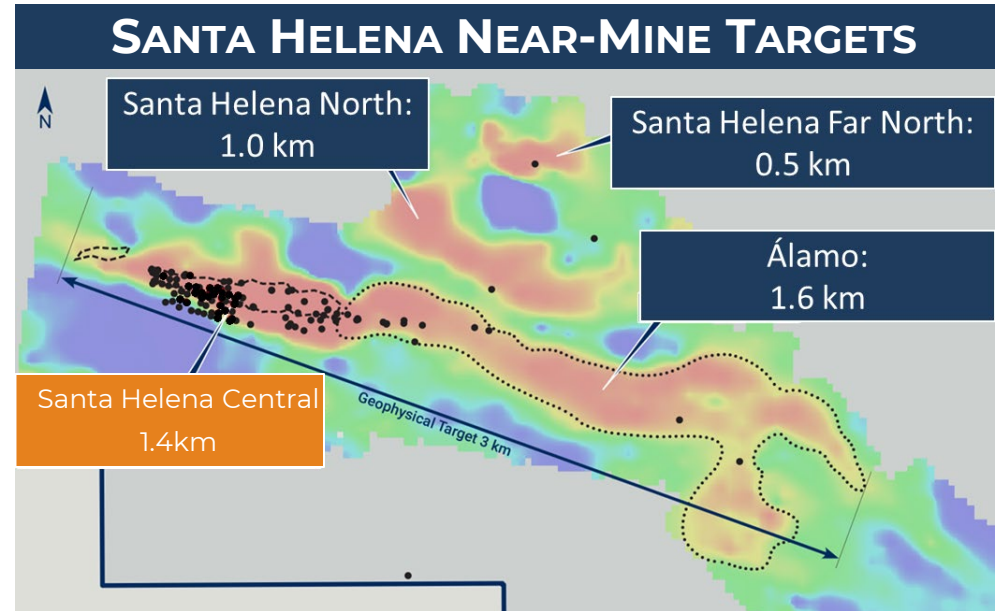
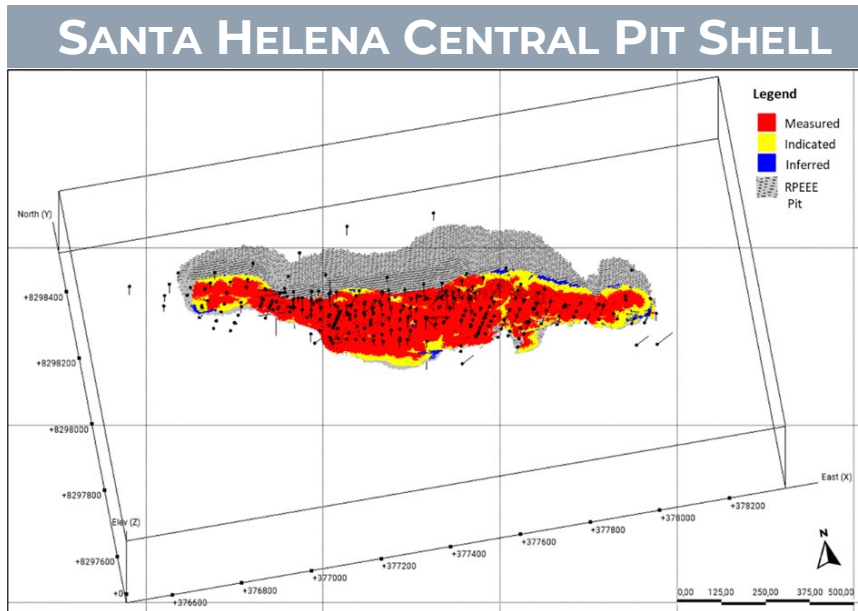
Notes: ¹ Subject to ANM process

CENTRAL ZONE OF 50KM BELT MINE CORRIDOR FROM CABAÇAL TO SANTA HELENA



SANTA HELENA CENTRAL MAIDEN RESOURCE*

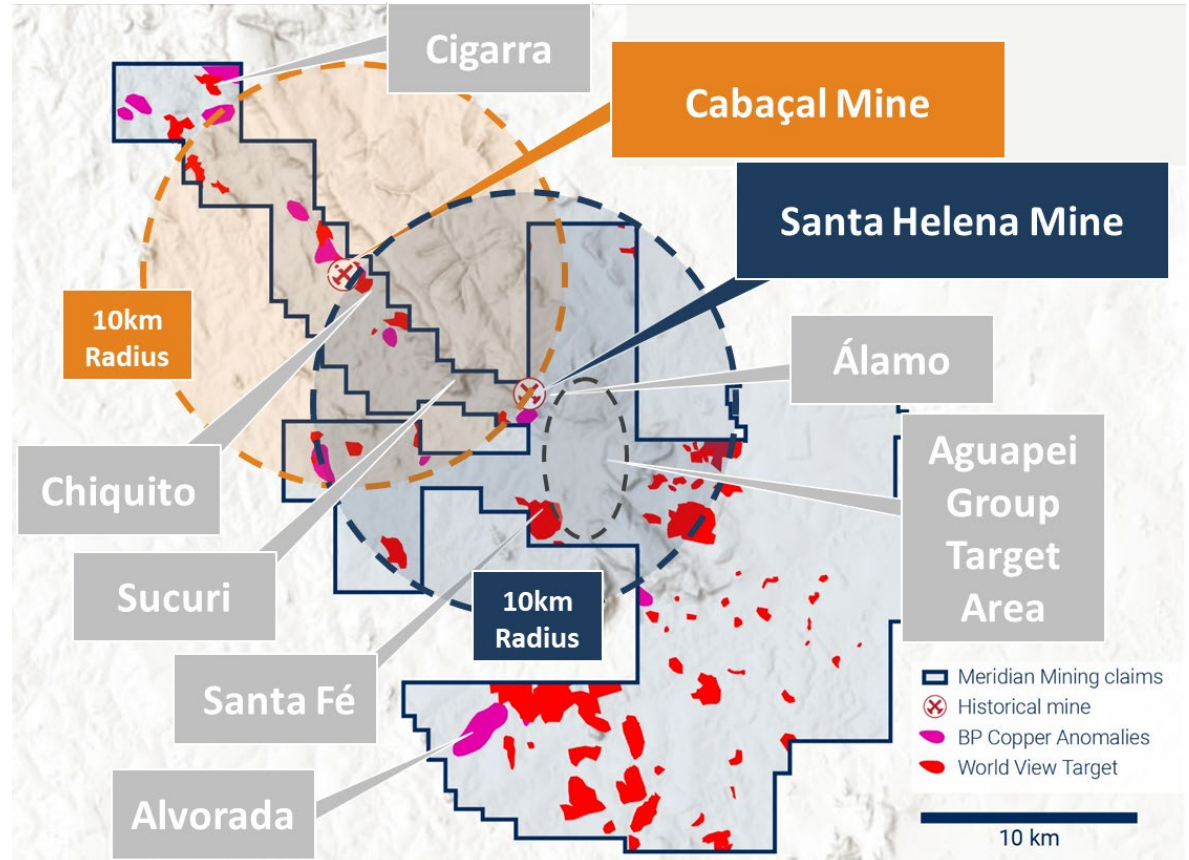
Classification	Mass Mt	Average Value					Metal Content				
		Au g/t	Ag g/t	Cu %	Zn %	Pb %	Au koz	Ag koz	Cu kt	Zn kt	Pb Kt
Measured	4.75	0.59	16.02	0.46	1.95	0.44	89.43	2443.96	21.63	92.36	21.07
Indicated	0.55	0.36	10.52	0.22	1.15	0.28	6.36	185.32	1.21	6.27	1.56
Meas + Ind	5.29	0.56	15.45	0.43	1.86	0.43	95.79	2629.28	22.84	98.63	22.62
Inferred	0.04	0.32	11.41	0.19	1.44	0.30	0.36	12.88	0.07	0.51	0.11



Notes: ¹ See Press Release 20th January 2026 for further details

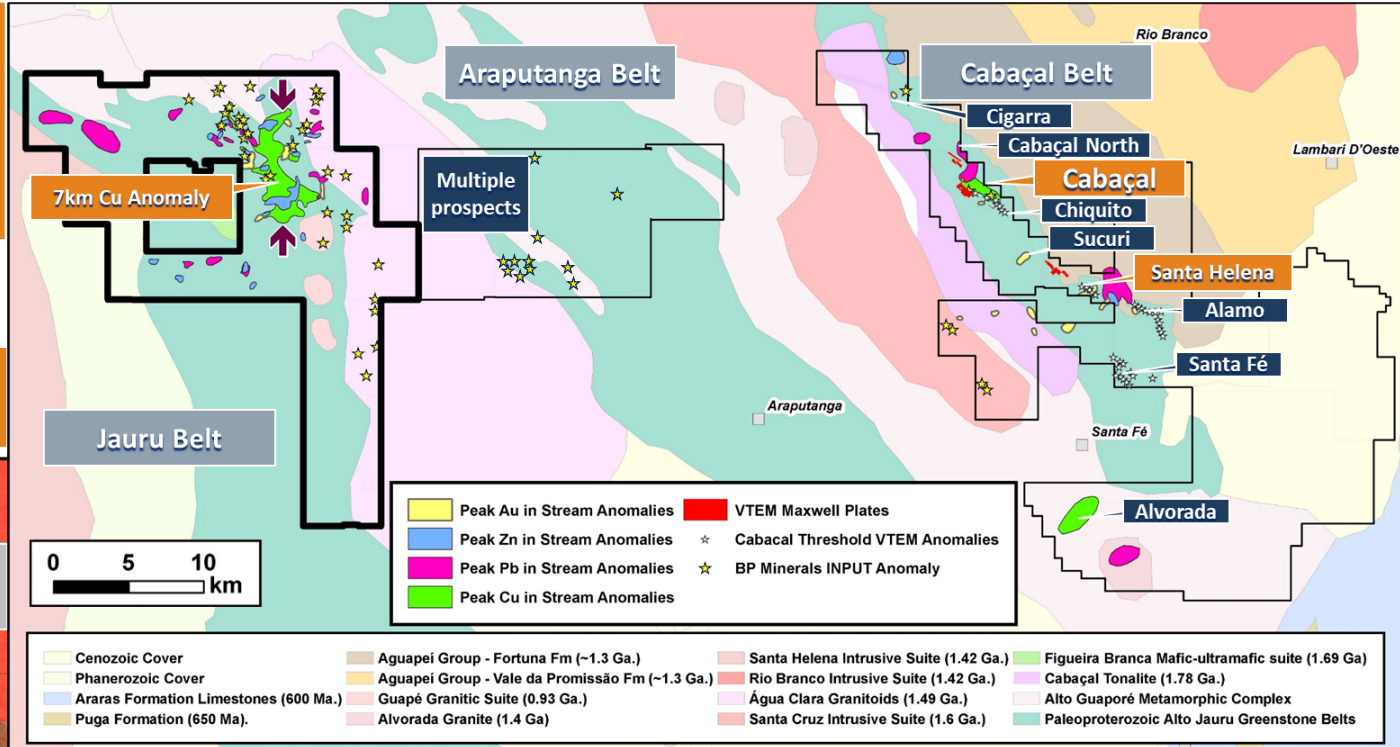
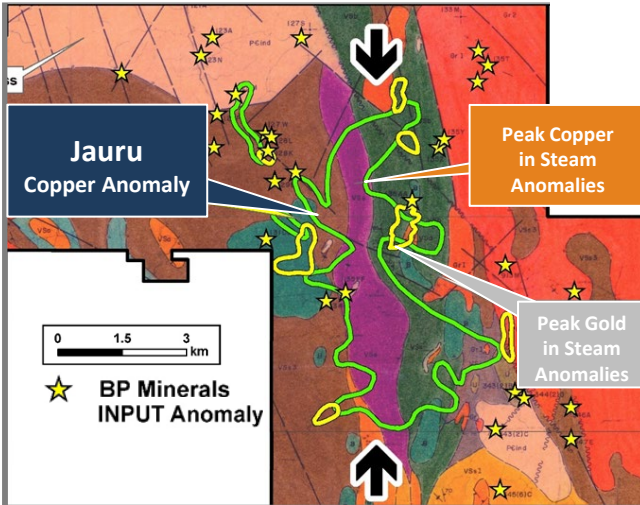
* The Company has not applied any economic analysis to the Santa Helena Central resource beyond that required to state a resource estimate and does not consider the resource to be material.

- Near-Mine Exploration Programs**
- Multiple potential Mining Hubs**
- Expanding Exploration Programs**
- Cigarra**
- Sucuri**
- Álamo**
- Chiquito**
- Santa Fé**
- Alvorada**



Notes:
 1 See Meridian Press Release - 14th February 2023

Largest Current Soil Anomaly over 7km



EXPLORATION

DRILLING AT SANTA FÉ
H1 2026

DRILLING AT CIGARRA
H1 2026

JAURO REGIONAL PROGRAMS
H2 2026

Exploration budget

– CAD 10 m

On-going drilling and exploration programs

Significant land holding

~ 104,932 ha

Historic exploration dataset

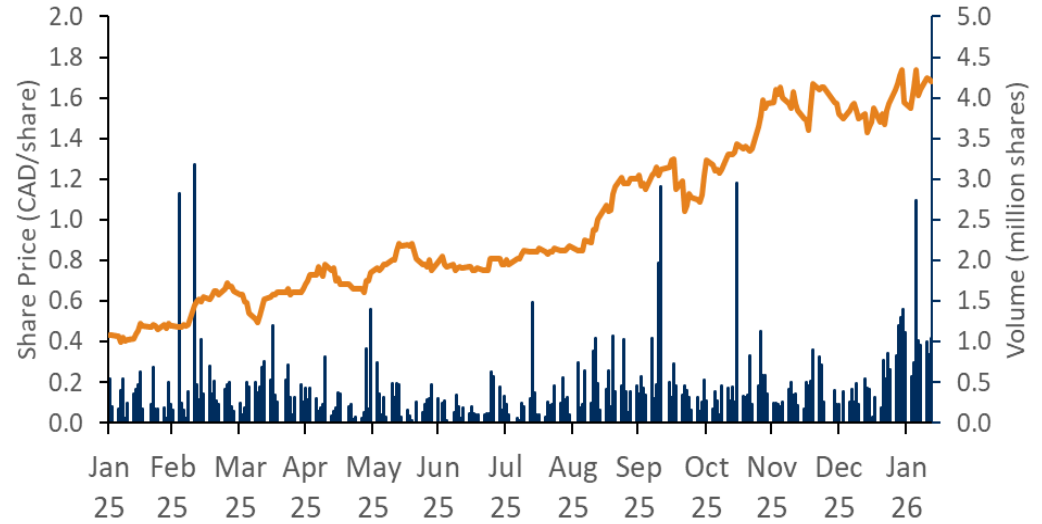
Notes:

¹ See Press Release 20th January 2026 for further details

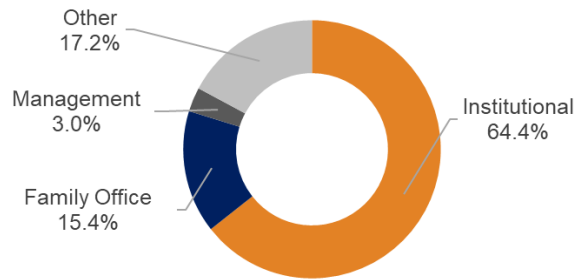
CORPORATE STRUCTURE¹

Shares Outstanding	456.9 m
Options	19.9 m <small>(CAD 0.35-1.10)</small>
Fully Diluted	476.9 m
Share Price	CAD 1.68 <small>(12 Feb 2026)</small>
Market Capitalization	CAD 766.9 m
Cash ²	CAD 63.9m <small>(30 September 2025)</small>
Placing Proceeds ³	CAD 54.7

MERIDIAN MINING PLC



OWNERSHIP STRUCTURE



ANALYST COVERAGE

- Mike Curran
- Stefan Ioannou
- Craig Stanley
- Eric Winmill
- Brandon Gaspar
- Cole McGill

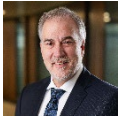
Notes:

1 Corporate Structure as of 12th February 2026 unless otherwise stated

2 Cash Balance as of 30th September 2025. Interim Financials Cash Balance & Exchange Rate 1.35 (Source - Bank of Canada)

3 See Press Release 12th Feb 2026

BOARD OF DIRECTORS



BRUCE MCLEOD
Independent Chair
+30 years experience



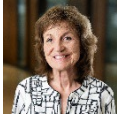
GILBERT CLARK
CEO & Director
+25 years experience



ADRIAN MCARTHUR
President & Director
+25 years experience



JOHN SKINNER
Independent Director
+35 years experience



SUSANNE SESSELMANN
Independent Director
+30 years experience



DOUG FORD
Independent Director
+35 years experience



NEIL GREGSON
Independent Director
+30 years experience

MANAGEMENT TEAM



GILBERT CLARK
CEO & Director
+25 years experience



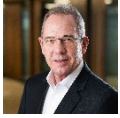
ADRIAN MCARTHUR
President & Director
+25 years experience



DAVID HALKYARD
CFO
+20 years experience



JAMES MCLUCAS
SVP - Corp. Development
+15 years experience



VITOR BELO
Chief Development Officer
+30 years experience



MARTIN MCFARLANE
SVP – Strategy & Projects
+30 years experience



CATHERINE APTHORPE
Company Secretary
+20 years experience



JOEL BRANDÃO
Director of Brazil
+40 years experience

ENGINEERING TEAM



THIAGO MARQUES SILVA
Project General Manager
+15 years experience



BRUNO WIEST
Electrical Engineer
+10 years experience



MARCELO AMORIM
Project Dev. Manager
+15 years experience



BÁRBARA SOUZA
Enviro. Engineer
+10 years experience



CYNTIA VALENTE
Civil Engineer
+25 years experience



ADRIANO MUNARETTI
Procurement Manager
+30 years experience



ANTÔNIO OLIVEIRA
Mechanical Engineer
+35 years experience



VALERIA PEREIRA
Cost Control Analyst
+20 years experience

FINANCE TEAM



TELMA LIMA
Group Financial Controller
+25 years experience



ELIANA MACIEL
Corporate Controller
+20 years experience



FABBIO KOLAS
Accountant
+15 years experience



RODRIGO SALVI
Inhouse Counsel
+10 years experience

GEOLOGY TEAM



ERICH MARQUES
Chief Geologist
+15 years experience



ANTÔNIO ALMEIDA
Senior geologist
+40 years experience



ANTÔNIO FELBER
Senior geologist
+10 years experience



4 X GEOLOGISTS
7 X Technicians
19 x Support Staff

PRODUCTION EXECUTION

- ▲ Fully financed to Decision to Mine, and accelerated development programmes
- ▲ PFS exceptional economics (Base case pricing):
 - ▲ Low initial capex - USD 248 million
 - ▲ USD 1.0 billion NPV₅ & 61.2% IRR
- ▲ Executable project:
 - ▲ In-house execution team engaged
 - ▲ Preliminary Licence approval

GROWTH POTENTIAL

- ▲ Santa Helena Central Maiden Resource declared
- ▲ VMS system open in all direction
- ▲ On-going drill program

EXPLORATION UPSIDE

- ▲ 50km of discovery potential at Cabaçal
- ▲ Multiple new targets defined
- ▲ CAD 10 million exploration budget

**Rapidly advancing Cabaçal
toward production**

**Growth with district scale
exploration potential**



Notes: ¹ See “Cabaçal Gold-Copper Project NI 43-101 Technical Report and Pre-feasibility Study” - 10th March 2025



MERIDIAN
MINING



APPENDIX



**REGIONAL
HYDROELECTRIC
GENERATION^{1,2}**

Jaurú Cascade
 235.9 MW
 (6 Facilities)

Juba Cascade
 139.4 MW
 (4 Facilities)

GOVERNING ESG PHILOSOPHIES



LONG TERM
EMPLOYMENT




CLEAN SOILS



CLEAN WATER



CLEAN AIR



CLEAN ENERGY

Source: ¹ www.quebecengenharia.com.br/complexo-juruena
² www.frontiersin.org/articles/10.3389/fenvs.2020.579031/full

CABAÇAL HISTORY

Discovery
1980-1984



AFONSO FIGUEIREDO
Geologist
+ 50 years experience

BP MINERALS
Development
1984-1986



ROCKY OSBORNE
Geologist
+ 40 years experience

Production
1986-1991



GILSON TEIXEIRA
Geologist
+ 40 years experience

RIO TINTO
Acquisition
1989-2005



JOHN WAGHORN
Geologist
+ 50 years experience

LEADING EXPERTISE IN METALLURGY & CONCENTRATES



PHILLIP MACKEY
Metallurgist
+ 50 years experience



MIKE OUNPUU
Geological Engineer
+ 40 years experience



FALCONBRIDGE



noranda



CAPITAL MARKETS EXPERTISE



TOMMY HUMPHREYS
Capital Markets
+ 15 years experience



STRUCTURED PURCHASE AGREEMENT TO ACQUIRE A 100% BENEFICIAL INTEREST¹



Protects Meridian Shareholders Equity and provides Vendors an Interest Going Forward

Payments	Requirements	Vendor Payment (USD)	Vendor Payment (Shares)	Status
1	On signing	25,000	—	Complete
2	On completion of due diligence	275,000	—	Complete
3	1st phase drilling program, subject to statutory approvals & access agreements, with independent QP review	1,750,000	—	Complete
4	Completion of NI 43-101 resource estimation	—	1,000,000	Complete
5	Positive Feasibility Study	1,850,000	1,500,000 (or CAD 450,000 at election of vendors)	Pending
6	30 days after grant of Installation Permits (LI) by Mato Grosso State	2,250,000	2,000,000 (or CAD 600,000 at election of vendors)	Pending
7	45 days after Cabaçal mine construction finance has been secured	2,600,000	—	Pending
Total Financial Consideration (USD)		8,750,000	4,500,000	

As Meridian advances Cabaçal its value increases, the investment risk decreases, and milestone related payments are made

Notes: ¹ See News Release 28th January 2022, 26th August, 3rd September 2020, & most recent MD&A

Item		
Plant Feed Mined	Mt	41.7
Waste Mined	Mt	97.2
Total Mined	Mt	138.9
Mill Throughput (LOM Average)	Mt/annum	3.9
Total gold production	ounces	744,301
Total copper production	tonnes	169,647
Total silver production	ounces	1,328,514

Item		
Milled tonnes	Mt	41.7
Mill throughput	Mt/ annum	3.9
Strip Ratio	Waste: Mineralized Material	2.3
Average metallurgical recovery - Gold	%	87.6%
Average metallurgical recovery - Copper	%	92.3%
Average metallurgical recovery - Silver	%	60.5%

Item		Year 1-5	LOM
Average annual AuEq recovered	000 Ounces	178.2	141.0
LOM Gold Recovered (AuEq)	000 Ounces	891.1	1,495.4
LOM Gold payable (AuEq)	000 Ounces	859.8	1,439.5
Total Cash Cost	USD/oz	546.4	684.7
Sustaining capital	USD/oz	24.1	37.7
All in Sustaining Costs ("AISC")	USD/oz	570.5	742.3

Notes: ¹ See "Cabaçal Gold-Copper Project NI 43-101 Technical Report and Pre-feasibility Study" - 10th March 2025

CAPITAL COST BREAKDOWN¹

Cabaçal Initial Capital Costs	
Item	US\$m
Mining	30.08
Process Plant	119.03
Dry Stack tailings	9.35
Off site infrastructure	9.96
Total Directs	168.41
Project Indirects	29.78
Owner's Costs	8.42
Total Indirects	38.20
Contingency	41.32
Project Total	247.93

Cabaçal Expansion Capital Costs	
Item	US\$m
Process Plant	35.49
Total Directs	35.49
Project Indirects (Incl. Owner's costs)	10.95
Total Indirects	10.95
Contingency	9.29
Project Total	55.73

Cabaçal Sustaining Capital Costs	
Item	US\$m
Dry Stack Tailing Facility	19.01
On site infrastructure / Dry Stack tailings	17.29
Plant Sustaining	17.98
Total Sustaining Capital	54.28

Notes: ¹ See "Cabaçal Gold-Copper Project NI 43-101 Technical Report and Pre-feasibility Study" - 10th March 2025

Cabaçal Operating Costs Breakdown		
Item	USD/t milled	USD/oz
Mining Costs	8.52	246.92
Labour	1.31	37.83
Power	1.54	44.56
Reagents & Consumables	2.64	76.57
Maintenance	0.90	26.05
Water/sewage	0.00	0.05
Road maintenance	0.04	1.14
Laboratory	0.24	7.04
Dry stack	0.63	18.27
Concentrate Logistics	2.21	64.17
G&A	2.05	59.33
Total Operating Costs	20.09	581.94

Notes: ¹ See “Cabaçal Gold-Copper Project NI 43-101 Technical Report and Pre-feasibility Study” - 10th March 2025

Item		LOM
Plant Feed Mined	Mt	41.7
Waste Mined	Mt	97.2
Total Mined	Mt	138.9
Strip Ratio	Waste:Mineralized Ore	2.3
Milled tonnes	Mt	41.7
Mill Throughput	Mt/annum	2.5 then 4.5
Item		
LOM		
Total gold production	ounces	744,301
Total copper production	tonnes	169,647
Total silver production	ounces	1,328,514
Average metallurgical recovery - Gold	%	87.6%
Average metallurgical recovery - Copper	%	92.3%
Average metallurgical recovery - Silver	%	60.5%
Item		
LOM		
Average annual gold production (AuEq)	000 Ounces	141.0
Recovered Gold (AuEq)	000 Ounces	1,495.4
Total Cash Cost	USD/oz AuEq	684.7
Sustaining capital	USD/oz AuEq	37.7
All in Sustaining Costs ("AISC")	USD/oz AuEq	742.3

Notes: ¹ See "Cabaçal Gold-Copper Project NI 43-101 Technical Report and Pre-feasibility Study" - 10th March 2025

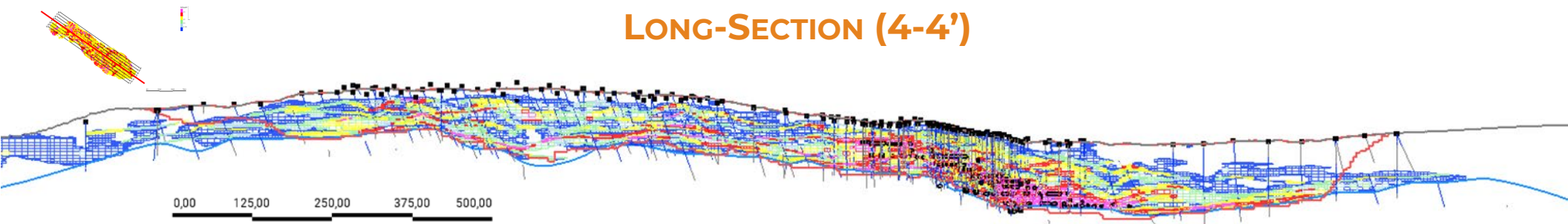
Item		Base Case		Spot Case	
Life of mine	Years	10.6		10.6	
NPV ₅	USD million	984		1,411	
IRR	%	61%		80%	
Payback	Months	17		12	
Initial Capital Expenditure	USD million	248		248	
Expansion Capital Expenditure	USD million	56		56	
Sustaining Capital Expenditure	USD million	54		54	
Item		Average Year 1-5	Total LOM	Average Year 1-5	Total LOM
Revenue	USD million	364	3,050	455	3,767
Operating Costs	USD million	77	838	77	838
Free cash (After Tax)	USD million	218	1,424	291	2,013

Notes: ¹ See “Cabaçal Gold-Copper Project NI 43-101 Technical Report and Pre-feasibility Study” - 10th March 2025

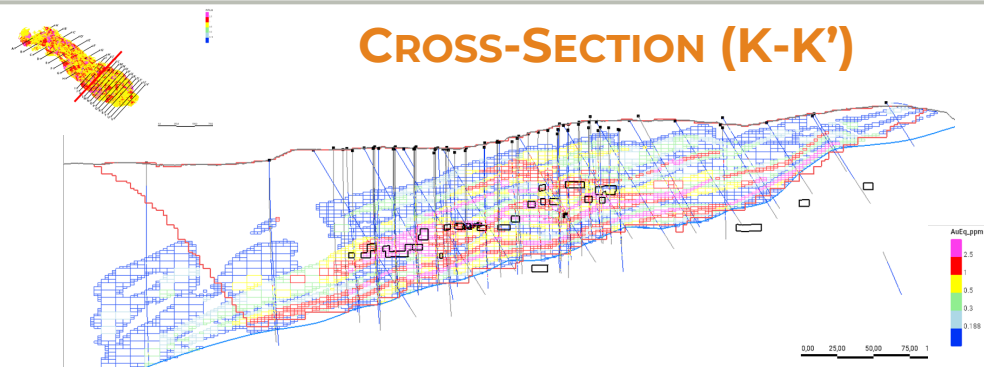
Year	Mining Schedule						Low Grade Stockpile Balance				Plant Feed			
	ROM (Mt)	Au (g/t)	Ag (g/t)	Cu (%)	Waste (Mt)	Total Mov (Mt)	LG Stock (Mt)	Au (g/t)	Ag (g/t)	Cu (%)	Plant Feed (Mt)	Au (g/t)	Ag (g/t)	Cu (%)
Pre-Stripping	1.89	0.31	0.89	0.34	8.41	10.30	2.12	0.47	0.90	0.33				
1	4.93	1.16	1.61	0.46	7.57	12.50	4.33	0.62	1.14	0.36	2.50	1.45	1.89	0.54
2	4.61	0.53	2.21	0.53	8.29	12.90	6.43	0.41	1.07	0.32	2.50	0.99	3.29	0.78
3	3.57	0.85	1.99	0.53	8.67	12.24	7.50	0.38	1.06	0.32	2.50	1.12	2.41	0.63
4	3.51	1.15	2.01	0.54	8.45	11.96	6.52	0.20	0.87	0.27	4.50	1.25	2.07	0.57
5	3.82	0.56	1.76	0.50	9.17	13.00	5.84	0.16	0.76	0.23	4.50	0.56	1.77	0.52
6	2.93	0.51	1.46	0.43	8.71	11.64	4.27	0.15	0.71	0.22	4.50	0.39	1.26	0.37
7	3.49	0.38	1.70	0.42	8.80	12.29	3.26	0.16	0.72	0.22	4.50	0.33	1.47	0.37
8	4.42	0.38	1.67	0.40	8.26	12.68	3.18	0.19	0.83	0.25	4.50	0.35	1.58	0.38
9	4.50	0.54	1.20	0.37	10.16	14.66	3.18	0.35	1.03	0.31	4.50	0.43	1.06	0.32
10	4.02	0.39	1.13	0.28	10.75	14.77	2.70	0.28	0.92	0.28	4.50	0.43	1.19	0.30
11	-	-	-	-	-	-	-	-	-	-	2.70	0.28	0.92	0.28
	41.70	0.63	1.64	0.44	97.24	138.94					41.70	0.63	1.64	0.44

Notes: ¹ See “Cabaçal Gold-Copper Project NI 43-101 Technical Report and Pre-feasibility Study” - 10th March 2025

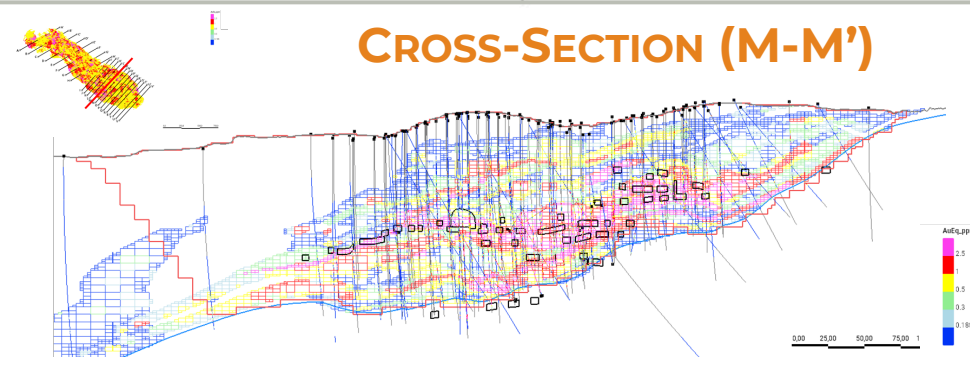
LONG-SECTION (4-4')



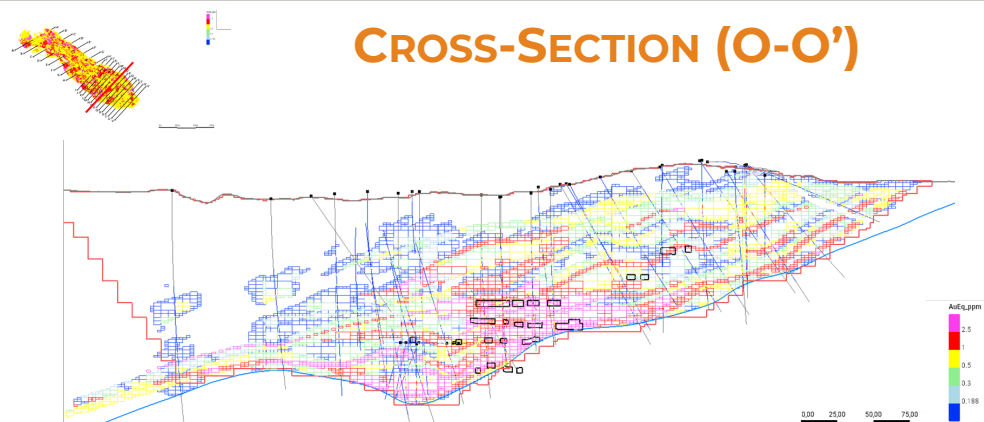
CROSS-SECTION (K-K')



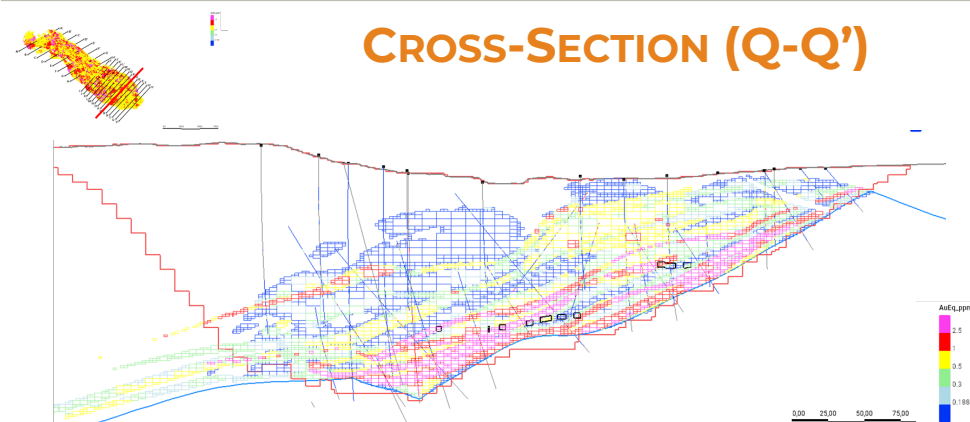
CROSS-SECTION (M-M')



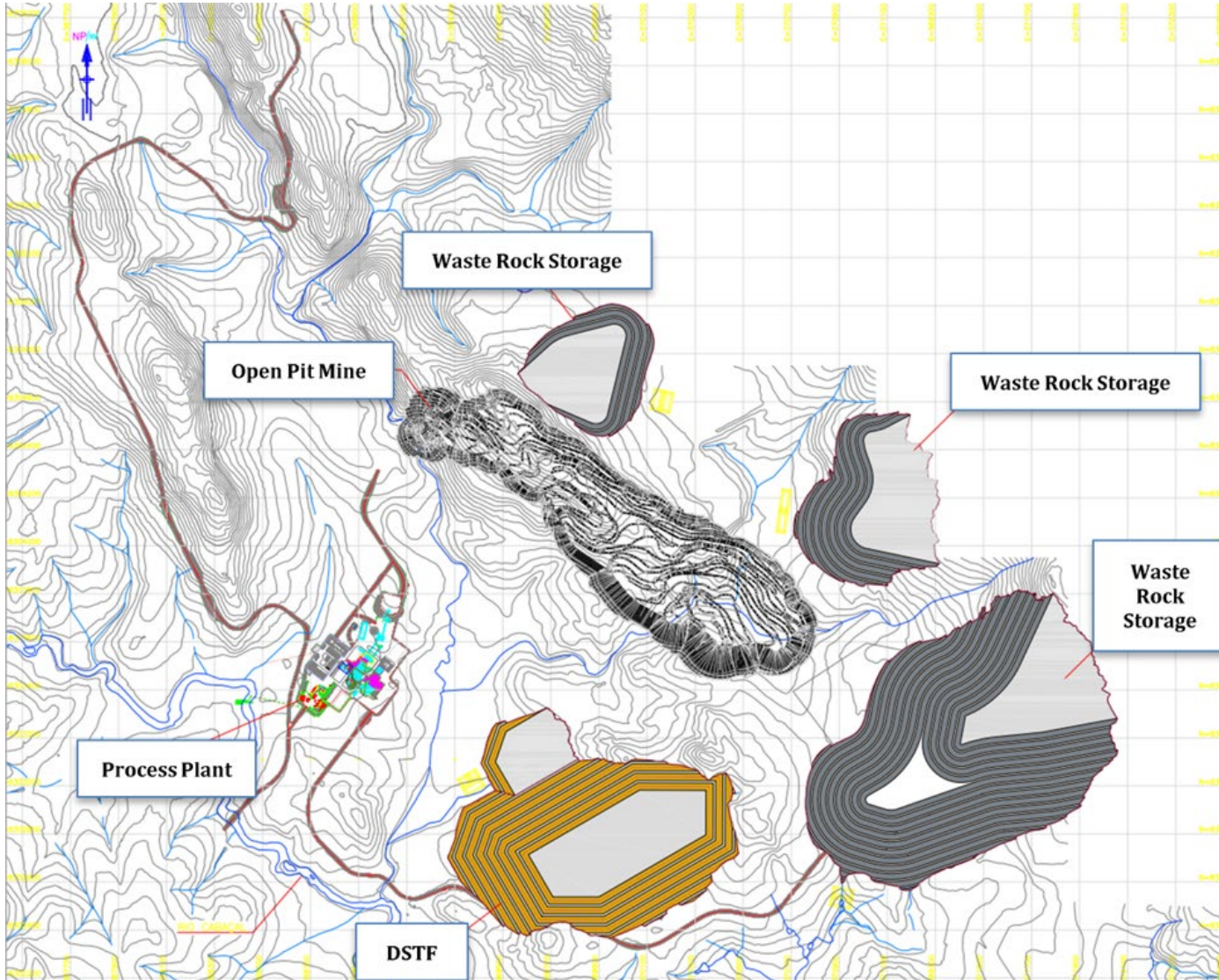
CROSS-SECTION (O-O')



CROSS-SECTION (Q-Q')



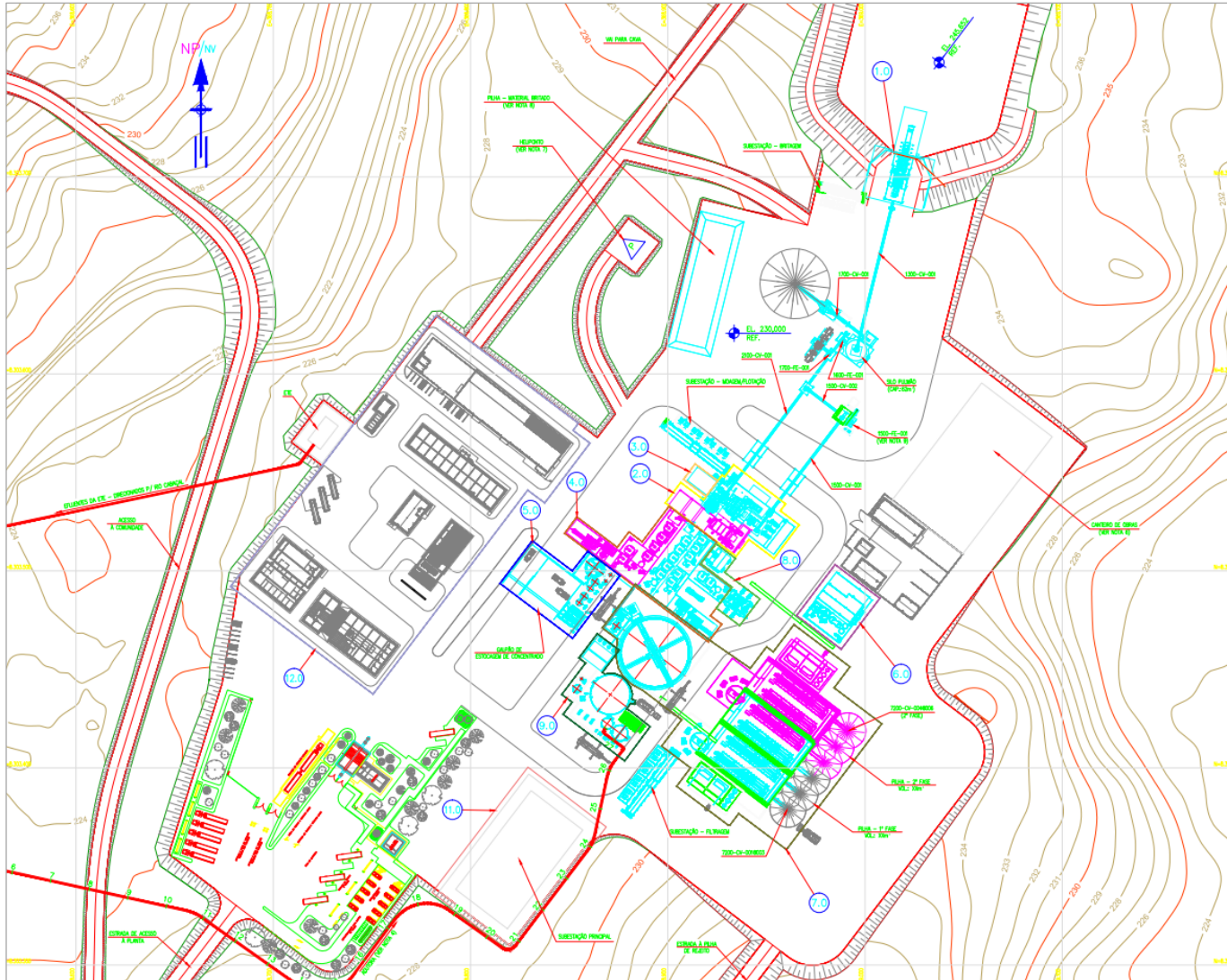
Notes: ¹ See "Cabaçal Gold-Copper Project NI 43-101 Technical Report and Pre-feasibility Study" - 10th March 2025



Simple Mine and Plant Layout

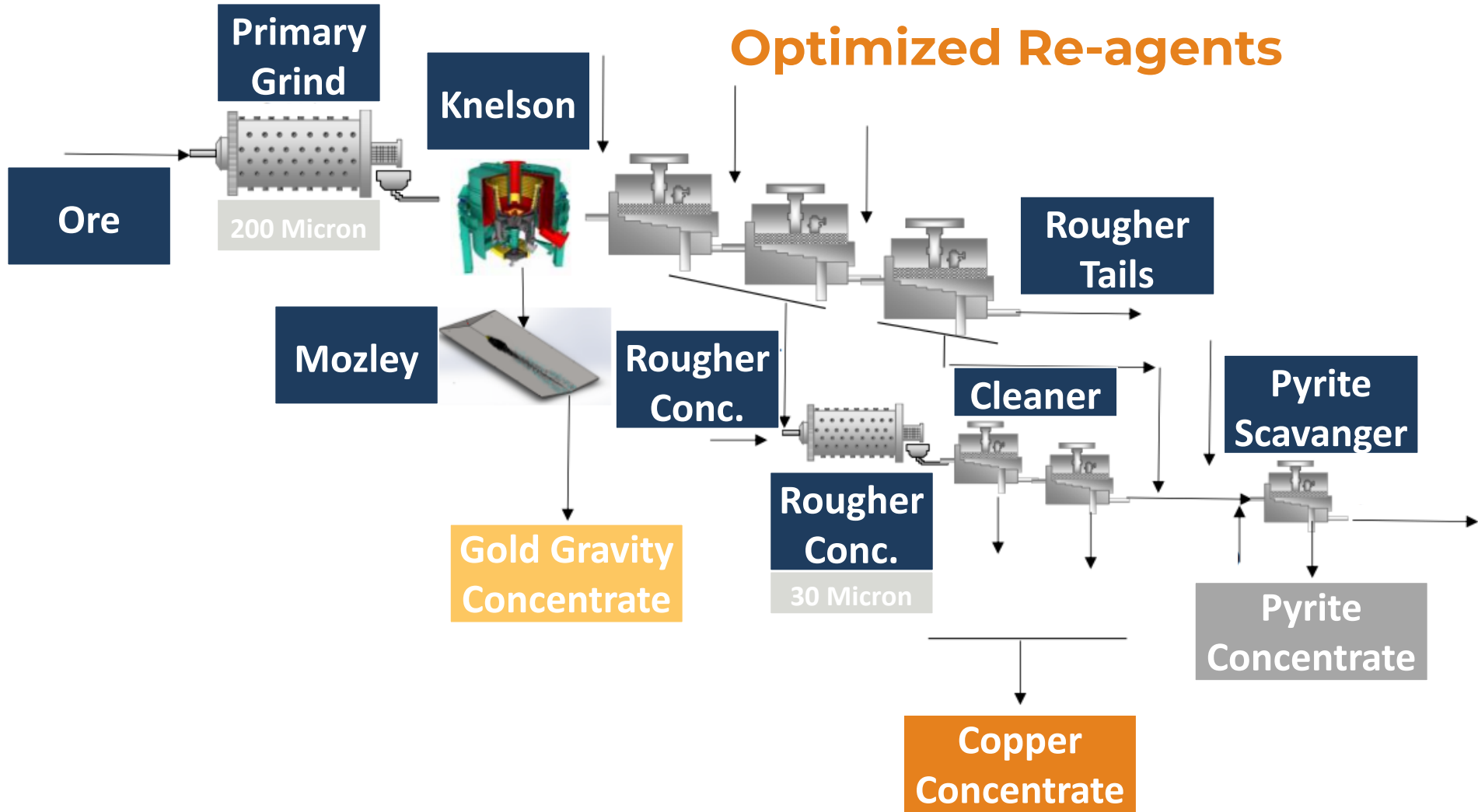
Tailings optimized for Trucking Distance

Notes: ¹ See “Cabaçal Gold-Copper Project NI 43-101 Technical Report and Pre-feasibility Study” - 10th March 2025

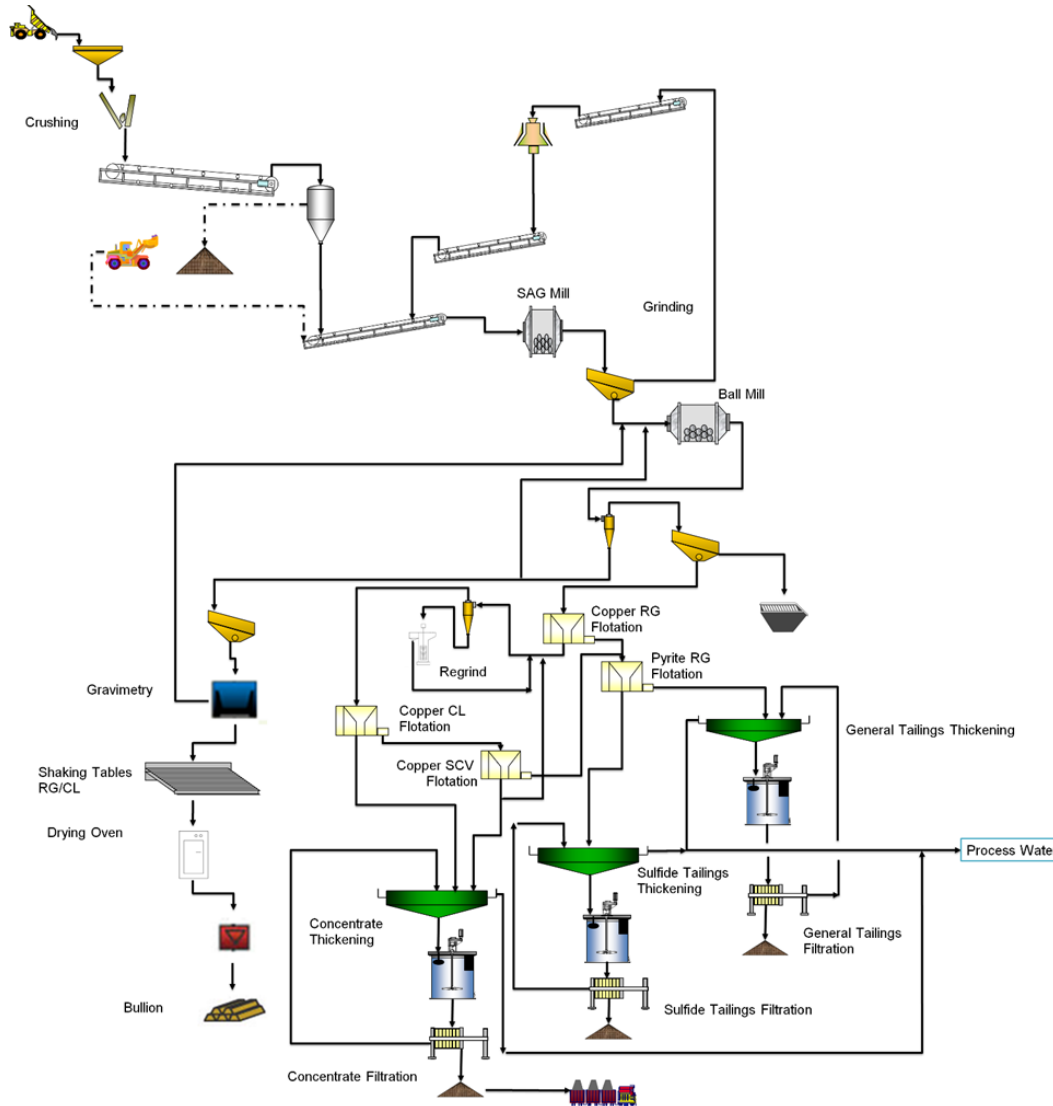


Two stage expansion plan with footings in place for 4.5mtpa production

Notes: 1 See "Cabaçal Gold-Copper Project NI 43-101 Technical Report and Pre-feasibility Study" - 10th March 2025



Notes: ¹ See “Cabaçal Gold-Copper Project NI 43-101 Technical Report and Pre-feasibility Study” - 10th March 2025



SIMPLE PROCESS FLOWSHEET WITH HIGH RECOVERIES

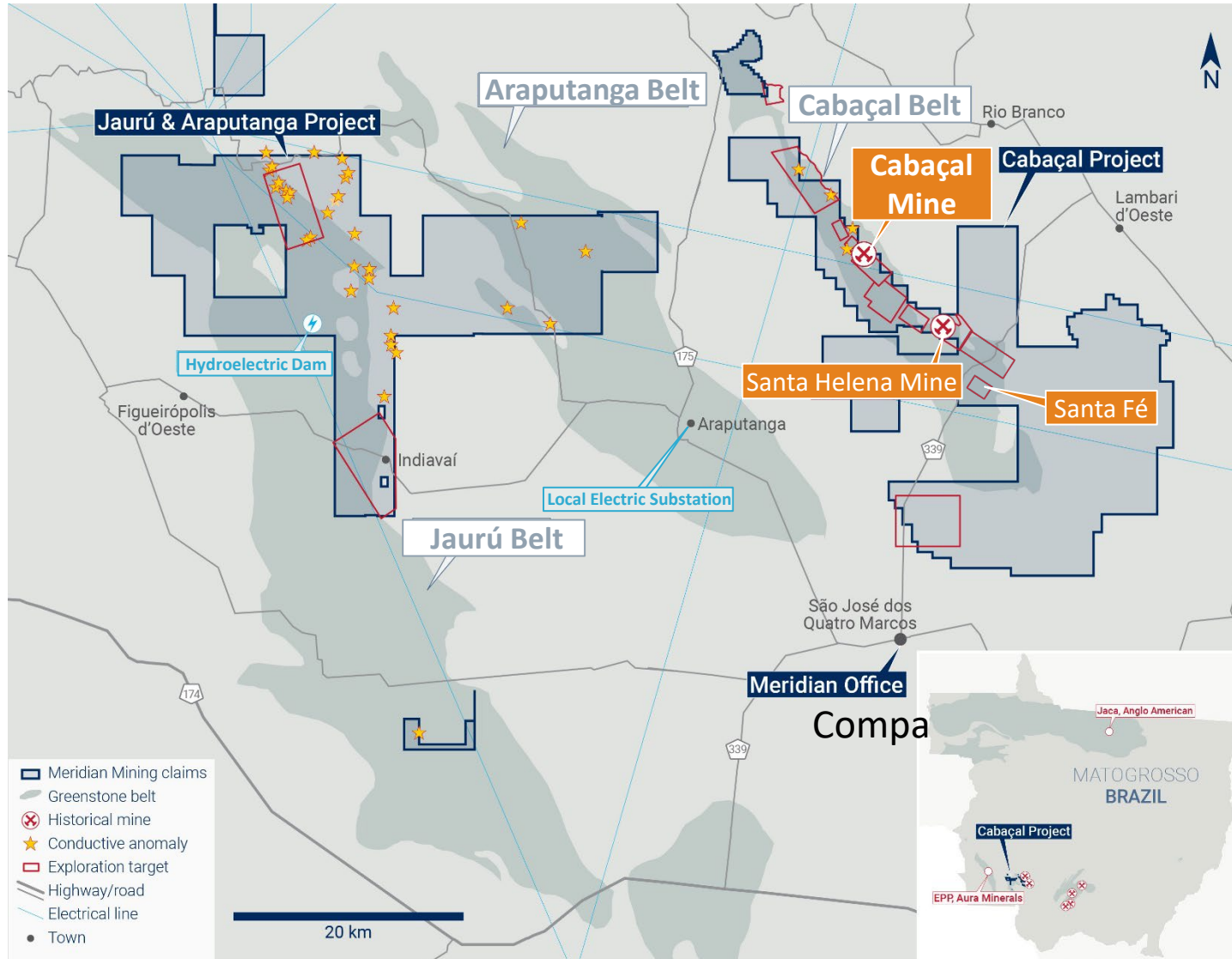
- Jaw Crusher**
- Primary Grind ~200 microns**
- Gravity Circuit – 30% Au**
- First Cu Flotation**
- Re-Grind ~30 microns**
- Cleaner Circuit delivers high grade, high recovery, clean concentrate**

ENGINEERED FOR EXPANSION

- SAG Mill for 2.5mtpa**
- Ball Mill added for 4.5mtpa capacity**
- Expanded Gravity and Flotation for 4.5 mtpa**

Notes: ¹ See “Cabaçal Gold-Copper Project NI 43-101 Technical Report and Pre-feasibility Study” - 10th March 2025

REGIONAL EXPLORATION TARGETS¹



DISTRICT SCALE

-  **928 km² tenements**
-  **Regional Exploration by BP Minerals**
-  **Historical Cu-Au-Zn geochemical anomalies**
-  **Potential extensions of VMS belt stratigraphy**
-  **Jaurú & Araputanga Greenstone belts potential to repeat discovery success at Cabaçal**

Notes: ¹See News Releases for further details

VMS CLUSTERS - HUB & SPOKE STRATEGY

VMS deposits occur in clusters & tend to form ~4km spacings

Deposit clusters ideal for Hub & Spoke development strategy

GIANT SCALE VMS

Cabaçal Mine – “Giant” (>30 Mt) VMS Deposit on standalone basis

Top 4% Global VMS deposits by tonnage

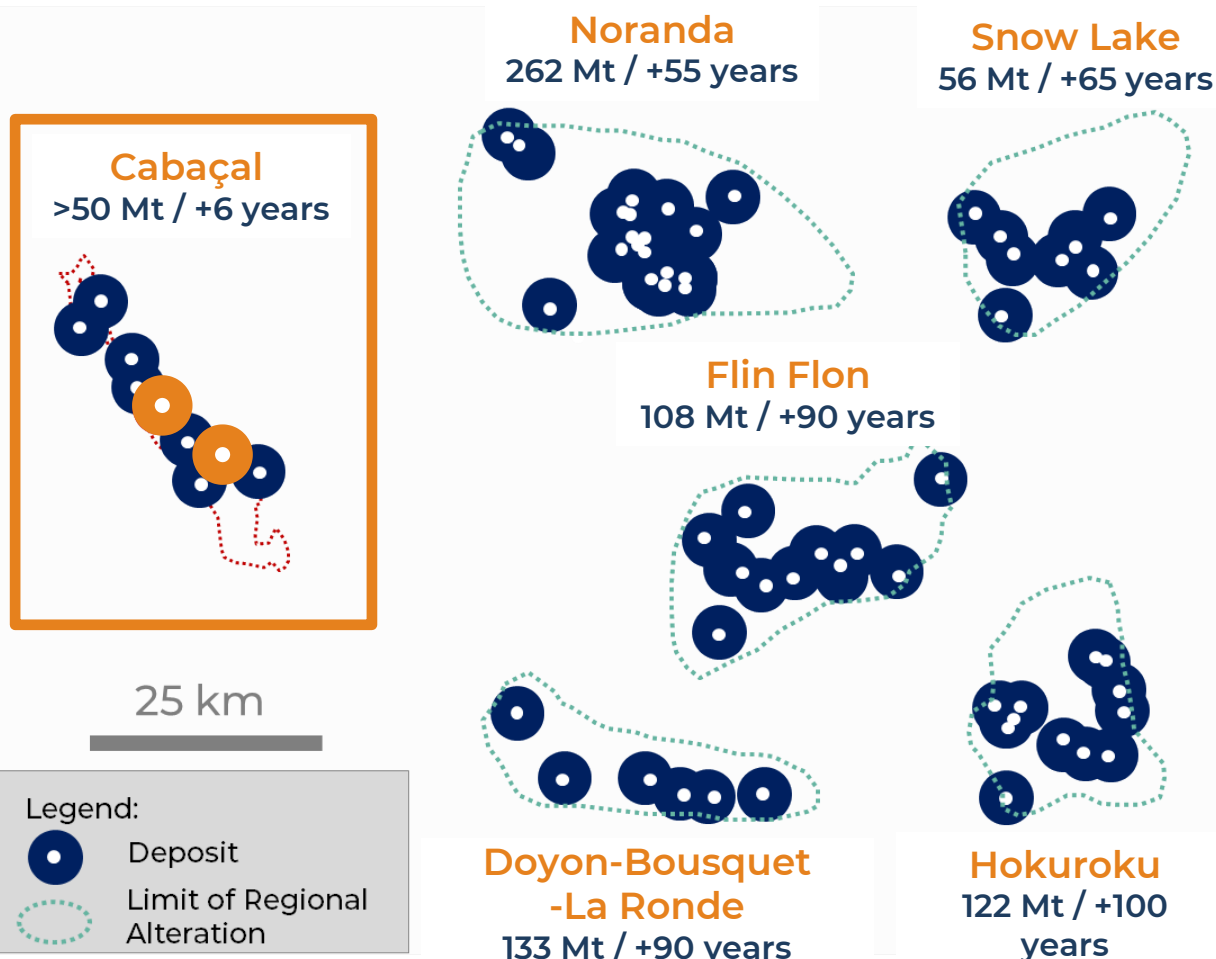
Cabaçal VMS Belt underexplored and under-developed compared to analogue VMS camps

INTERGENERATIONAL PRODUCTION

Many large VMS Deposits have over 50 year production history

Cabaçal - 6 years past production & 11 year projected LOM (PFS)³

VMS BELTS – LOW CAPEX – HIGH RETURNS – LONG LIFE



Notes:

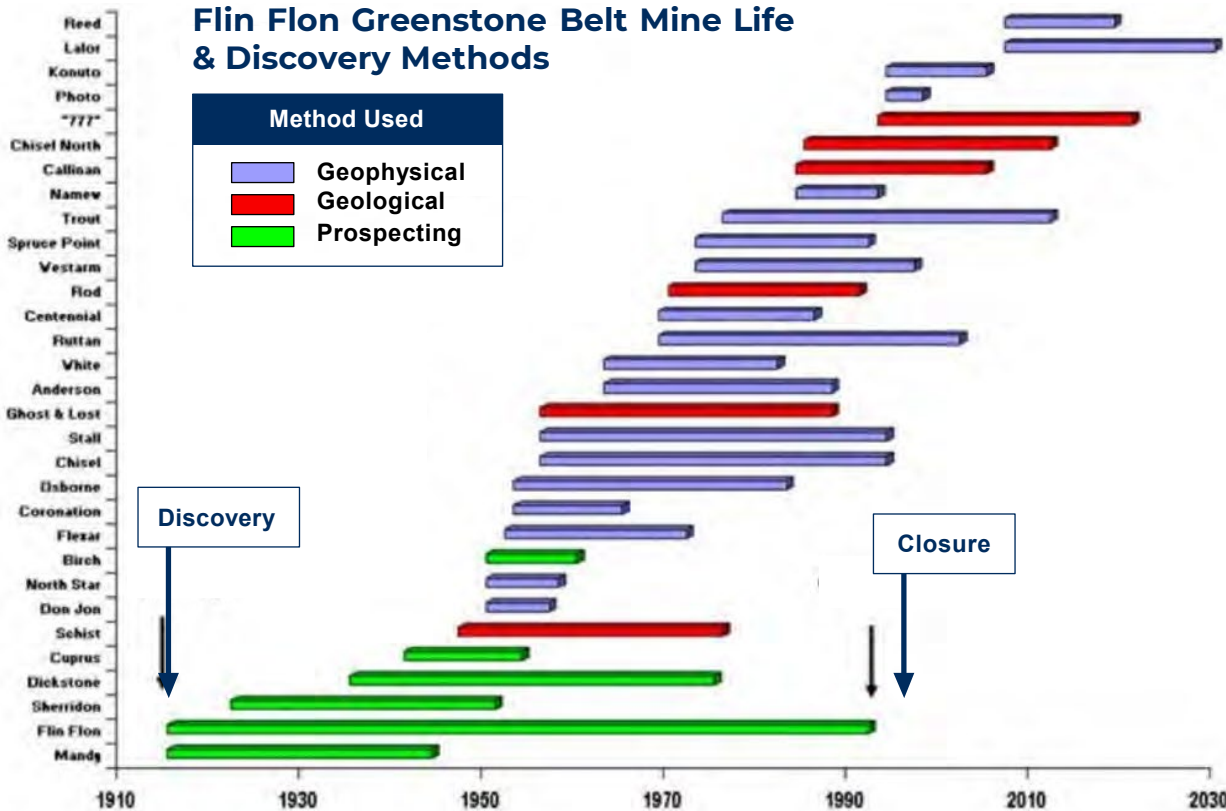
1 See Meridian Announcements

2 Source: Akita University, Galley et al. (2007); Mercier-Langevin et al. (2007) S&P Global, Hudbay 2020

3 See “Cabaçal Gold-Copper Project NI 43-101 Technical Report and Pre-feasibility Study” - 10th March 2025

THE TECHNICAL EVOLUTION

Flin Flon Greenstone Belt Mine Life & Discovery Methods



- ▲ First discovery identified through prospecting (David Collins - Tom Creighton, 1914)
- ▲ Early mapping and geochemistry may identify hydrothermal centers. Economic mineralization not necessarily present at surface
- ▲ Cyclical nature of metal prices can influence sustained exploration effort
- ▲ Modern geophysical exploration methods have successfully expanded the discovery window, through surface and down-hole survey techniques
- ▲ Improved analytical methods add increasingly sophisticated criteria for geochemical vectoring to mineralization
- ▲ Geochemical methods are supplemented by alteration mapping, maximizing information from deeper drilling to map fluid pathways, and model the hydrothermal system in 3D

▲ FLIN FLON: FROM THE PROSPECTOR TO VTEM

Notes:

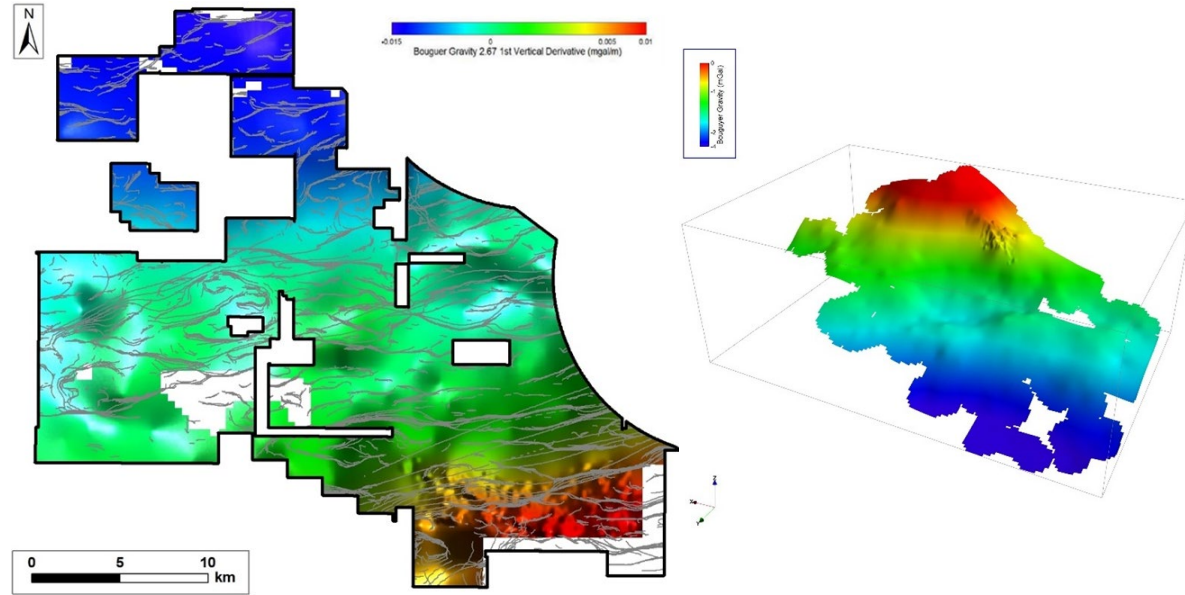
¹ Source: Gilmore and Wood, 2012 / Hudbay [**https://csegrecorder.com/articles/view/geophysical-exploran-beneath-the-phanerozoic-cover-of-the-flin-flon](https://csegrecorder.com/articles/view/geophysical-exploran-beneath-the-phanerozoic-cover-of-the-flin-flon)

ESPIGÃO PROJECT

Iron Oxide-Copper-Gold (“IOCG”) type deposits host the giant Cu-Au mines of Brazil and some of the biggest Cu-Au mines internationally e.g. Salobo & Olympic Dam

Espigão hosts the prospective geochemistry comparable to large-scale IOCG type deposits

First gravity survey 2km centered stations and testing for scale – Broad gravity anomalies defined



	Magnetic Anomaly Amplitude	Magnetic Anomaly Amplitude	Gravity Anomaly Amplitude	Gravity Anomaly Amplitude
Units	nT	km	Mgal	Km
Espigão Project	500	Open	15	Open
Deposit				
Olympic Dam	1,400	8 km across	17	8 km across
Wirrda Well	1,800	6 * 9 km	6	6 * 9 km
Carapateena	200-300	1.5 * 1.0 km	2 - 2.5	2 * 2 km
Prominent Hill	7,000	0.7 * 0.5 km	5	2.5 * 1 km
Ernest Henry	7,000 – 10,000	1.2 * 0.7 km	2 - 3	1.2 * 0.7 km
Eloise	1,100	0.75 * 0.25 km	1.0	1.0 * 0.5 km

Notes:

¹ See News Release 5th May 2022

² Table 1 International IOCG and associated



MERIDIAN MINING

Meridian Mining plc

Phone: +44 (0) 203 930 3145 (GMT)

Email: info@meridianmining.net.br

Corporate Address:

8th Floor 4 More London, Riverside,
London, United Kingdom, SE1 2AU

Gilbert Clark

Chief Executive Officer